


PAUL MURDOCH ARCHITECTS + TEAM



**City of Hermosa Beach
Department of Public Works**

Request for Qualifications (RFQ) NO. 25-003
On-Call Professional Architectural Services

September 18, 2025

TOC

Cover Letter

Team Profile

Organizational Chart

Bios of Key Staff

Relevant Experience and References

Project Management Plan

Required Forms

Rate Schedule

September 18, 2025

Andrew Nguyen
Public Works Department – Engineering Division
City of Hermosa Beach
1315 Valley Drive
Hermosa Beach, CA 90254

Re: Request for Qualifications (RFQ) NO. 25-003
On-Call Professional Architectural Services
City of Hermosa Beach, California

Paul Murdoch Architects is pleased to present this Statement of Qualifications, in association with our diverse team of experienced sub-consultants, for On-Call Professional Architectural Services with the City of Hermosa Beach.

Since the founding of our firm thirty-four years ago, we have worked with public agencies on projects that have strengthened communities through architecture featuring functional clarity, contextual sensitivity, and sustainable design. Founded as a practice dedicated to the poetic exploration of sustainable architecture and creative design excellence, we believe we are well suited to support the City's program of upcoming projects.

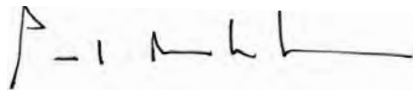
Our key personnel includes Paul Murdoch as Principal in Charge, Milena Murdoch as Principal Project Manager, and Eric Cunningham as Senior Project Designer, who have collaborated for over twenty-two years on public projects. Together with our sub-consultants, we bring a depth of expertise and diversity of experience. In each of our on-call contracts, we have exceeded participation goals, including our recently completed agreement with Los Angeles World Airports, which achieved an "A" rating over 18 task orders spanning six years.

As demonstrated through these on-call contracts, we have the project management capability to define and deliver clear design options, to help select an optimal solution within an agreed schedule and budget. Our programming method is inclusive, relying on integrated planning and community engagement. Having advanced many civic projects in the Los Angeles region, we are familiar with the reporting and delivery requirements essential to public agencies. Our E&O change order performance for public projects is consistently in the 2% range.

We understand the scope of this on-call contract to include responsive architectural services for City facilities, ranging from studies and assessments to full design, documentation, and construction administration. We acknowledge receipt of all addenda issued for this RFQ.

With the enclosed Statement of Qualifications, we express our strong interest in and commitment to supporting the City of Hermosa Beach in delivering thoughtful, resilient, and well-crafted public projects. Thank you for your consideration.

Yours truly,



Paul Murdoch, FAIA, LEED AP

President, Paul Murdoch Architects
6310 San Vicente Boulevard, Suite 400
Los Angeles, CA 90048
310 358-0993 #1
paul@paulmurdocharchitects.com

Team Profile



PAUL MURDOCH ARCHITECTS + TEAM

PAUL MURDOCH ARCHITECTS

Paul Murdoch Architects
6310 San Vicente Boulevard, Suite 400
Los Angeles, CA 90048
(310) 358-0993
www.paulmurdocharchitects.com

A firm dedicated to the poetic exploration of sustainable architecture

Paul Murdoch Architects is a professional corporation based in Los Angeles, California. The firm specializes in architecture, urban design, and interiors for civic, cultural, and educational institutions. Since our founding in 1991, we have worked continuously for thirty-four years, guided by the belief that design should serve as a catalyst for community identity, environmental stewardship, and human connection.

Our practice is recognized as a leader in sustainable design, having pioneered some of the earliest initiatives in Los Angeles. Through the poetics of sustainable architecture, we design forms, lead processes, and invent project typologies that shape new human activity. We see ourselves as creative agents of social and environmental change for institutions and communities seeking to improve 21st-century life.

We believe the most sustainable forms are those that emerge through collaborative disclosure. By enhancing the qualities latent in a place and inherent in human activity, design acquires vitality. As context and activities evolve over time, form must be original in derivation yet adaptable to change. This is not merely a technical challenge, but one of poetic dimension. When form is alive with the spirit of place and people, it gains a vitality that can endure for generations. Nurturing that vitality is our calling.

As an architectural studio, we explore a wide range of project types and scales, always striving to exceed client expectations. Our goal is to broaden a project's definition through persistent inquiry, explore its community of constituents, examine value for limited resources, and find innovative responses that transform a community's capacity to meet present and future needs. In Hermosa Beach, this approach aligns with the City's values of sustainability, coastal resilience, and community identity.

Our design process combines advanced three-dimensional modeling with physical study models and integrated energy and daylight simulations. The firm is fully insured, led by licensed architects, and certified as a Small Business Enterprise (SBE Micro). With the enclosed Statement of Qualifications, we express our commitment to supporting the City of Hermosa Beach in delivering thoughtful, resilient, and well-crafted public projects. Our E&O change order performance for public projects is consistently in the 2% range. Paul Murdoch Architects has never failed or refused to complete a contract.

Year Established: 1991 (34 years in business)

Type of Ownership: Corporation

Typical Firm Size: 8-12 staff members

Federal Employer Identification Number:

Certification: SBE Micro



Experience Narrative

The depth and breadth of our team's collective experience covers the range of project types and expertise anticipated for this On-Call contract.

Relevant Experience

Our selected projects demonstrate a breadth of civic design, from master planning and urban design to architecture and engineering for public facilities. These projects have integrated innovative technologies and careful cost management to deliver sustainable, community-focused outcomes. Our team structure combines the senior leadership of a certified SBE Microbusiness, with extensive on-call experience for agencies such as BOE and LAWA, supported by a diverse group of consultants who together provide the full range of services anticipated for this contract.

Key Personnel

Paul Murdoch Architects, an SBE Micro, proposes to lead a team of experts in public facility architecture and engineering. Paul and Milena Murdoch will guide the team, drawing on their extensive experience leading prior on-call contracts with both BOE and LAWA. Key personnel include Eric Cunningham as Senior Project Designer, who has been a longstanding member of the firm, and Albert Orozco as Job Captain, who brings continued contributions to our civic work.

Approach to Services

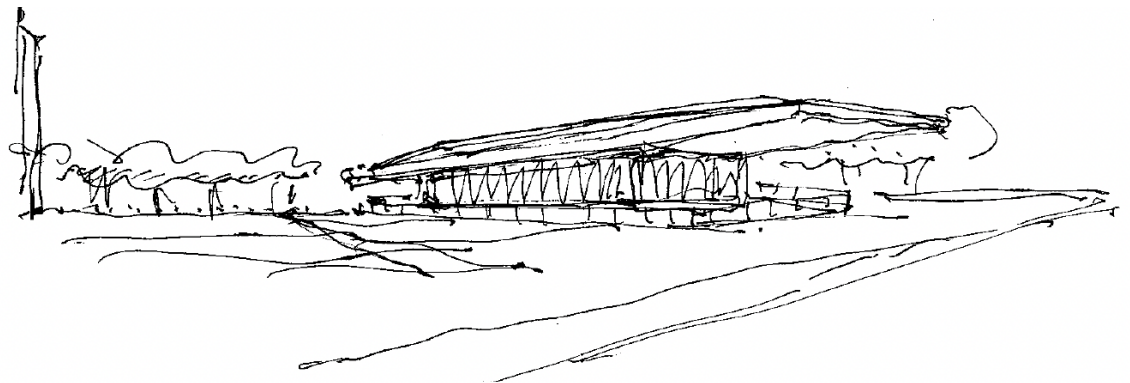
Paul Murdoch Architects, a certified SBE Micro, will lead a team of experts in public facility architecture and engineering. Paul and Milena Murdoch provide principal leadership, drawing on their extensive experience managing prior on-call contracts with both BOE and LAWA. Supporting them are Eric Cunningham, Senior Project Designer, whose long tenure with the firm has shaped many of our civic projects, and Albert Orozco, Job Captain, whose continued contributions strengthen the delivery of well-crafted, community-focused work.

Inclusivity Commitment

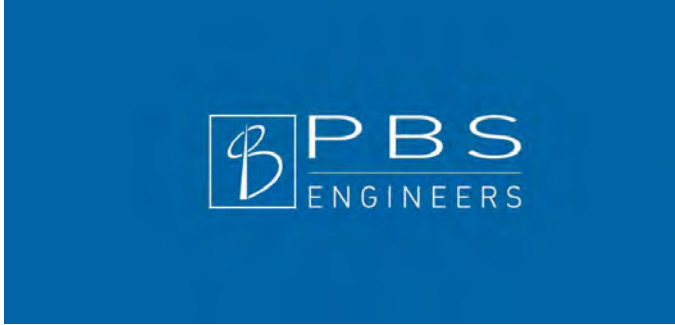
The team represents a range of firm types, from small specialized practices to larger multi-disciplinary consultants. This breadth reflects our commitment to assembling a robust group with varied expertise and perspectives. We have a long history of forming collaborative teams that consistently exceed agency participation goals.

Sustainability

For more than thirty-four years, Paul Murdoch Architects has been recognized as a leader in sustainable design, pioneering some of the earliest environmental initiatives in Los Angeles. Paul advised the City after the 1994 civic unrest on rebuilding the Eighth District Constituent Services Center with sustainable features and later helped establish citywide environmental design criteria as a founding member of the Sustainable Design Taskforce. The firm is a signatory of the AIA 2030 Commitment, a longtime member of the U.S. Green Building Council, and experienced with LEED, the Living Building Challenge, and California's green building codes. Our work includes notable firsts such as the City's first Zero Net Energy and Zero Operating Carbon recreation centers, the first Zero Net Energy facility for the California Department of General Services, and the first Los Angeles County park designed to approach Zero Net Water operations. With this depth of experience, we understand the importance of resilience in a coastal setting, where sustainable design must also address sea level rise, resource conservation, and long-term community wellbeing.



Subconsultants



PBS Engineers (Electrical|Mechanical| Plumbing)

PBS Engineers provides full-service MEP design including mechanical, electrical, plumbing, fire protection, and technology systems. With decades of experience on public projects across Southern California, they deliver efficient, coordinated solutions that support sustainability, reliability, and ease of maintenance. Their leadership team stays closely involved, ensuring projects run smoothly from concept through construction.



Marx Okubo (Condition Assessment)

Marx | Okubo specializes in building and facility condition assessments that help agencies evaluate performance, risk, and lifecycle value. Their work supports clear decisions on maintenance, renovation, and replacement, providing objective analysis that strengthens long-term planning. With a strong presence in Southern California, the firm is trusted for its thorough assessments and practical recommendations.



Labib & Funk & Associates (Structural)

Labib Funk + Associates is a structural engineering practice known for innovative yet practical design tailored to civic and community facilities. They collaborate with architects to integrate efficient structural systems while maintaining architectural intent and constructability. Their track record with municipal clients demonstrates reliable delivery and responsive technical support.



Cumming Group (Cost Estimating)

Cumming Group provides independent cost estimating and project controls, offering detailed analysis that helps agencies manage budgets with confidence. Their estimators bring specialized knowledge of public sector projects, from early planning through construction. By delivering transparent, data-driven reports, Cumming supports accountable decision-making and financial stewardship.



MIG (Landscape Design)

MIG is a landscape architecture and planning firm focused on creating resilient parks, open spaces, and civic environments. Their work emphasizes ecological design, community engagement, and the integration of natural systems into urban settings. MIG's collaborative approach results in public landscapes that are sustainable, welcoming, and deeply connected to place.

Subconsultants



VCA (Civil)

VCA Engineers provides civil engineering services including site planning, grading, drainage, and utility design for public facilities. Their work emphasizes clear coordination with architects and engineers to create efficient, buildable solutions that meet agency standards and community needs. With extensive municipal experience, VCA delivers civil systems that support long-term performance and reliable project delivery.



Geocon (Geotechnical)

Geocon provides geotechnical, environmental, and materials testing services that support the safe and cost-effective design of public infrastructure. Their expertise includes site investigations, foundation recommendations, and construction-phase monitoring to ensure stability and compliance with regulatory standards. With decades of municipal project experience, Geocon delivers practical, science-based solutions that help agencies reduce risk and build with confidence.



MARK THOMAS

Mark Thomas (Surveying)

The new office building pioneers Mark Thomas provides professional surveying and mapping services that support the planning and delivery of public works projects. Their team delivers accurate boundary, topographic, and construction surveys that form the foundation for effective design and coordination. With a long record of municipal service, Mark Thomas ensures precise data, reliable documentation, and responsive support throughout project development.

**HISTORIC
RESOURCES
GROUP**

HRG (Historic Review)

Historic Resources Group is a preservation consulting firm dedicated exclusively to the evaluation, documentation, and treatment of historic buildings, districts, and cultural resources. Their team of historic architects, historians, and planners meets or exceeds the Secretary of the Interior's Professional Qualifications Standards, bringing deep expertise to preservation planning, environmental review, and historic design consultation. HRG ensures that cultural resources are integrated

ARUP

Arup (Fire Safety)

Arup is a global engineering and consulting firm with specialized expertise in fire and life safety design for complex public facilities. Their multidisciplinary team integrates code analysis, risk assessment, and performance-based design to deliver safe, resilient environments. With a strong Los Angeles presence, Arup provides innovative strategies that ensure compliance, enhance occupant safety, and support efficient project delivery.

Subconsultants

Firm Name and Contact	Entity Type	FEIN	Ownership	Year Established	Years in Business	Certifications	Contract
Paul Murdoch Architects, 6310 San Vicente Blvd, Suite 400 Los Angeles, CA 90048 Tel: (310) 358-0993 paul@paulmurdocharchitects.com POC: Paul Murdoch, FAIA, President	Corporation	95-4335445	Privately Owned	1991	34	SBE, Micro, LSBE (County of Los Angeles)	Never failed or refused a contract
PBS Engineers, Inc. 279 E. Arrow Hwy, Suite 201 San Dimas, CA 91773 Tel: (626) 650-0350 kshah@pbsengineers.com POC: Kunal Shah, PE, RCDD, LEED AP - President/CEO	Corporation	77-0599129	Privately Owned	2003	22	SBE, MBE, DBE	Never failed or refused a contract
VCA Engineers, Inc. 631 S. Atlantic Blvd. Monterey Park, CA 91754 Phone: (323) 729-6098 Email: virgil.aonan@vcaeng.com Contact: Virgil C. Aonan, PE, SE, QSD - Principal	S-Corporation	20-0054405	Individually Owned	2003	22	SBE, DBE, MBE, LSBE	Never failed or refused a contract
John Labib Structural Engineers, LLP d/b/a Labib Funk + Associates 319 Main Street El Segundo, CA 90245 Phone: (213) 239-9700 Email: chuck.whitaker@labibfunk.com Contact: Chuck Whitaker - Partner	LLP	45-2576446	LLP	2003	22	LBE	Never failed or refused a contract
Mark Thomas & Company, Inc. 515 S. Flower Street, 18th Floor Los Angeles, CA 90071 Phone: (213) 592-1570 Email: criehle@markthomas.com Contact: Chris Riehle, Survey Manager II	Corporation	94-1451490	Employee-owned	1927	98	N/A	Never failed or refused a contract
Marx Okubo Associates, Inc. 790 E. Colorado Blvd., Suite 250 Pasadena, CA 91101 Phone: (626) 792-6842 Email: mark_hulme@marxokubo.com Contact: Mark J. Hulme	Corporation	84-0887811	Privately held - 100% ESOP	1982	43	N/A	Never failed or refused a contract
Moore Iacofano Goltsman, Inc. (MIG) 360 East Second Street, Suite 675 Los Angeles, CA 90012 Phone: (213) 694-3800 Email: jzell@migcom.com Contact: Jennifer Zell, ASLA, PLA - Director of Regenerative Design Studio	Corporation	94-3116998	Individually Owned	1982	43	N/A	Never failed or refused a contract
Cumming Management Group, Inc. 350 South Grand Avenue, Suite 1900 Los Angeles, CA 90071 Phone: (213) 518-8148 Email: raj.adusumalli@cumming- group.com Contact: Raj Adusumalli	Corporation	20-8782096	Cumming Holding Group, Inc. (parent company); Cumming Management Group, Inc. (subsidiary)	2019 (Contracting Entity)	29	N/A	Never failed or refused a contract
Historic Resources Group (HRG) 556 S. Fair Oaks Avenue, Suite 101-514 Pasadena, CA 91105 Phone: (626) 793-2400 Email: hrg@historicrosourcesgroup.com Contact: Christine Lazzaretto	LLC	95-4244555	Individually Owned	1989	36	WBE, LBE (City of Los Angeles); CBE, LSBE (County of Los Angeles); SB (Micro) (CA Dept. of General Services); SBE (Metropolitan Water District)	Never failed or refused a contract
Arup US, Inc. 900 Wilshire Blvd, 19th Floor Los Angeles, CA 90017 Phone: (310) 578-4400 Email: brian.mclaughlin@arup.com Contact: Brian McLaughlin, Associate Principal	Corporation	36-2711213	Individually Owned	1946	79	N/A	Arup fulfills all contractual requirements on awarded projects
Geocon West, Inc. 2807 McGaw Avenue Irvine, California 92614 Phone: (949) 491-6570 Email: jelisa@geoconinc.com Contact: Jelisa Adams, Vice President / Senior Engineer	S-Corporation	90-0130181	Geocon West, Inc. is part of Geocon Group, Inc.	2003	22	N/A	Never failed or refused a contract

Organizational Chart



Paul Murdoch Architects

LSBE, EBE

Paul Murdoch FAIA, LEED, AP, Principal in Charge
Milena Murdoch, Principal Project Manager
Eric Cunningham, Senior Project Designer
Albert Orozco, Job Captain

Landscape Architecture Services

LANDSCAPE ARCHITECTURE
MIG, Inc.
Jennifer Zell, ASLA, PLA
Director of Regenerative Design
Studio
OBE

Engineering Services

GEOTECHNICAL
Geocon
Jelisa Adams,
Vice President /
Senior Engineer
LBE, OBE

CIVIL
VCA Engineers, Inc.
Virgil C. Aoanan, PE, SE, QSD
Principal
SBE, DBE, MBE, LSBE

STRUCTURAL
Labib Funk + Associates
Chuck Whitaker
Partner
LBE, OBE

M/E/P/
PBS Engineers.
Kunal Shah, E, RCDD, LEED AP
President/CEO
MBE, DBE, SBE

FIRE SAFETY
Arup
Brian McLaughlin, Associate
Principal
OBE

Other Services

CONDITION ASSESMENT/ADA
Marx Okubo
Mark Hulme, AIA, LEED AP
Vice President
OBE

HISTORIC PRESERVATION
Historic Resources Group
John Locascio, AIA
Principal Architect
WBE, LBE, CBE, LSBE, MICRO

SURVEY
Mark Thomas & Company
Chris Riehle,
Survey Manager II
OBE

COST ESTIMATING/CM
Cumming Management
Group, Inc.
Raj Adusumalli
Director
OBE

Bios of Key Staff

An abstract architectural graphic featuring a dark grey background. A large, light grey, angular shape, resembling a stylized roof or a wall section, dominates the upper right. Below this, a horizontal band of light grey is visible. The bottom portion of the image shows a dark grey area with diagonal lines, suggesting a floor or a wall with a textured surface. A vertical grey element, possibly a column or a beam, is positioned in the lower left.

PAUL MURDOCH ARCHITECTS + TEAM

Proposed Consultant Team

The depth and breadth of our team’s collective experience covers the full range of project types anticipated for the On-Call contract. It also provides overlap and redundancy of firms’ capabilities to address possibility of multiple task order assignments and potential conflicts with availability.

Team Structure and Leadership

Paul Murdoch Architects, a Local Small Microbusiness in Los Angeles (LA), will lead a multi-disciplinary team of experts in design and planning who bring extensive experience working with City of Los Angeles and LA BOE projects. Paul and Milena Murdoch will serve as the Principal in Charge and Principal Project Manager respectively, as they have done for more than five years on their previous Architectural On-Call contracts with LA BOE and LAWA.

Demonstrating our commitment to inclusivity, we conducted an extensive outreach process that has led to our proposed team of sub-consultants. We have worked with many of the team members but have also included many firms new to our association. The organization chart that follows presents over forty firms, many certified, who form our team.



Project Role Principal-in-Charge



Paul Murdoch FAIA, LEED AP
Paul Murdoch Architects, President

Education

Master of Architecture,
University of California, Los Angeles

Bachelor of Science, Architecture,
University of Virginia

Certificate in Master Planning,
Harvard University

Registrations

Registered Architect,
California #C19061
Pennsylvania #RA403749
American Institute of Architects (AIA)
AIA/Los Angeles, AIA/Europe
LEED Accredited Professional
US Green Building Council

Years with Current Firm

34 years

Years Total Experience

44 years

Work History

Paul Murdoch Architects: 1991-Current
Arthur Erickson Architects: 1984-1991
Urban Innovations Group: 1982-1983

Location

Los Angeles, CA

Relevant Experience

As President of Paul Murdoch Architects, Paul has been Principal-in-Charge for each of the firm's projects, including civic work for LA BOE and major master planning and infrastructure:

Slauson Connect Recreation Center
"Magic" Johnson Recreation Area
Flight 93 National Memorial
Healthy Living Campus Master Plan
Central Avenue Constituent Services
DMV Inglewood Field Office
Bruggemeyer Library Expansion
Oxnard College Library
LAX Automated People Mover
LAX Urban Design Analysis

As Principal-in-Charge, Paul will be the senior point of contact .

Areas of Expertise

- Leadership Skills
- Stakeholder Coordination
- Alternative Deliveries
- Project Management
- Urban Design
- Architectural Design
- Universal Design
- Sustainable Design
- Equitable Design

Project Role Principal Project Manager



Milena Murdoch RA
Paul Murdoch Architects, Vice President

Education

Master of Architecture, Summa Cum Laude, University of California (UCLA)

Bachelor of Arts, Summa Cum Laude, Brandeis University

Registrations

Registered Architect, California #C25750

Years with Current Firm

25 years

Years Total Experience

40 years

Work History

Paul Murdoch Architects: 2001-current

Ted Tokio Tanaka: 1997-2001

Richard Meier & Partners: 1991-1997

AC Martin: 1989-1991

Frank Israel & Associates: 1985-1989

Location

Los Angeles, CA

Relevant Experience

As Vice President of Paul Murdoch Architects, Milena has managed many of the firm's projects, including for LA BOE, master planning and infrastructure:

Slauson Connect Recreation Center
"Magic" Johnson Recreation Area
Flight 93 National Memorial
Healthy Living Campus Master Plan
Central Avenue Constituent Services
DMV Inglewood Field Office
Gaffey Street Pool & Bathhouse
Oxnard College Library
LAX Urban Design Analysis

As Principal Project Manager, Milena will be the key person responsible for successful project delivery.

Areas of Expertise

- Leadership Skills
- Management On-Call Contracts
- Alternative Deliveries
- Stakeholder Coordination
- Regulatory Agencies Coordination/ Permitting
- Management of Large Multi-disciplinary Teams
- Cost Estimating & Scheduling
- Master Planning
- Architectural Design
- Construction Administration
- Urban Design

Project Role Senior Project Designer



Eric Cunningham

Paul Murdoch Architects

Education

Bachelor of Architecture, University of Southern California (USC)

Years with Current Firm

26 years

Years Total Experience

26 years

Work History

Paul Murdoch Architects: 1999-current

Location

Los Angeles, CA

Relevant Experience

As Senior Project designer of Paul Murdoch Architects, Eric has developed designs on many of the firm's projects, including planning and infrastructure:

Slauson Connect Recreation Center
"Magic" Johnson Recreation Area
Flight 93 National Memorial
Healthy Living Campus Master Plan
Central Avenue Constituent Services
DMV Inglewood Field Office
Bruggemeyer Library Expansion
Oxnard College Library
Pierce College Learning Crossroads

As Senior Project designer, Eric will develop designs and be responsible for digital design documentation.

Areas of Expertise

- Stakeholder Coordination
- Regulatory Agencies Coordination/ Permitting
- Capital Improvement Programming
- Master Planning
- Architectural Design
- Construction Administration
- Urban Design

Project Role Job Captain



Albert Orozco

Paul Murdoch Architects

Education

Master of Architecture, Summa Cum Laude, University of California (UC Berkeley)

Years with Current Firm

8 years

Years Total Experience

9 years

Work History

Paul Murdoch Architects: 2017-current

Location

Los Angeles, CA

Relevant Experience

As Job Captain and Project Designer of Paul Murdoch Architects, Albert has contributed to many of the firm's projects, including for master planning and infrastructure:

Slauson Connect Recreation Center

Healthy Living Campus Master Plan

October One Memorial

Bakersfield Community Center

LAX e-Gates TBIT Renovation

LAX Urban Design Analysis

LAX ATMP Urban Design

As Job Captain, Albert will be the key person responsible for compiling and organizing design documentation.

Areas of Expertise

- Stakeholder Coordination
- Regulatory Agencies Coordination/ Permitting
- Capital Improvement Programming
- Master Planning
- Architectural Design
- Construction Administration
- Urban Design

Subconsultants



PBS Engineers- Kunal Shah, PE, RCDD, LEED AP, President & CEO

Kunal Shah will serve as Principal-in-Charge for PBS Engineers on this contract. He is a licensed electrical engineer with more than 25 years of experience in mechanical, electrical, plumbing, fire protection, and technology system design for public agencies. His expertise includes coordination of complex building systems, sustainable design integration, and responsive client service. Kunal has led numerous on-call assignments across Southern California, ensuring quality delivery through direct principal involvement at every stage.



Marx | Okubo – Mark J. Hulme, AIA, CASp, LEED AP BD+C, Vice President

Mark Hulme will lead Marx | Okubo's role on this contract, bringing more than two decades of architectural consulting experience. He specializes in accessibility compliance, property condition assessments, and technical due diligence, holding credentials as both a licensed architect and a Certified Access Specialist (CASp). Mark has directed multidisciplinary teams on behalf of public agencies, higher education institutions, and private clients, providing evaluations that inform design, renovation, and capital planning. His leadership emphasizes practical solutions, regulatory compliance, and clear communication, ensuring that project goals are achieved while supporting long-term facility performance. PBS Engineers – Kunal



Labib Funk + Associates – Chuck Whitaker, SE, Principal

Chuck Whitaker will serve as Principal-in-Charge for Labib Funk + Associates on this contract. With more than 45 years of experience in engineering design, project management, and construction administration, he has directed structural solutions for civic, educational, cultural, and institutional facilities across California. Chuck is known for developing economical and practical systems, applying value engineering and peer review to ensure design efficiency and constructability. He has led seismic evaluations, retrofits, and on-call assignments for public agencies including the Los Angeles Convention Center, LAUSD, and Los Angeles International Airport.



Cumming Group – Raj Adusumalli, Director

Raj Adusumalli will serve as Principal-in-Charge for Cumming Group on this contract. He brings more than 13 years of experience in cost estimating and project controls, with thousands of hours dedicated to public and private sector projects. Raj leads teams in preparing accurate estimates from program through design, developing task order costs, and reviewing change orders. His recent municipal work includes projects for the County of Los Angeles and the City of Santa Barbara, demonstrating the expertise and attention to detail he will bring to Hermosa Beach.



MIG – Jennifer Zell, ASLA, PLA, Senior Landscape Architect

Jennifer Zell will serve as Senior Landscape Architect for MIG on this contract. With more than 20 years of experience, she has led award-winning public projects across Southern California, including restoration, resiliency, and climate adaptation initiatives in coastal communities. Jennifer specializes in creating landscapes that enhance biodiversity and integrate natural systems into urban contexts. Her recent work includes the Hermosa Beach Climate Change Adaptation and Resiliency Measure, demonstrating her direct experience with the City and its coastal priorities.

Subconsultants



VCA Engineers – Virgil C. Aoanan, PE, SE, QSD, Principal

Virgil Aoanan will serve as Principal-in-Charge for VCA Engineers on this contract. With more than 40 years of civil and structural engineering experience, he has led the planning, design, and construction of recreation facilities and public works improvements throughout Southern California. His expertise includes site development, utility design, grading, sustainable stormwater management, roadway geometrics, and ADA compliance. Virgil is also well versed in permitting and coordination with agencies such as the City of Los Angeles, the California State Water Resources Control Board, and the California Coastal Commission, ensuring smooth delivery of projects that interface with multiple jurisdictions.



Geocon West, Inc. – Jelisa Adams, GE, Vice President / Senior Engineer

Jelisa Adams will serve as Principal-in-Charge for Geocon West on this contract. A licensed Geotechnical and Civil Engineer with 19 years of experience, she has managed investigations and materials testing programs for cities and counties across Southern California. Jelisa specializes in geotechnical analysis, seismic upgrades, stormwater infiltration studies, and construction-phase quality control. She currently oversees on-call contracts with the Cities of San Juan Capistrano, Garden Grove, and Newport Beach, bringing direct experience in municipal task order management. Her work ensures safe, cost-effective, and regulatory-compliant foundations for public projects.



Mark Thomas – Chris Riehle, PLS, Survey Manager II

Chris Riehle will serve as Survey Lead for Mark Thomas on this contract. A licensed Professional Land Surveyor with more than 23 years of experience, he has managed a wide range of projects including boundary analysis, topographic mapping, ALTA/NSPS surveys, and legal descriptions. Chris has led survey services for major infrastructure efforts such as the LAX Terminal Development and Improvement Program and the relocation of the 160-acre LAX Maintenance Yard, as well as multiple on-call assignments for cities across Southern California. His expertise ensures accurate, regulatory-compliant data collection that supports successful project delivery.



Historic Resources Group – John LoCascio, AIA, Principal Architect

John LoCascio will serve as Principal Architect for HRG on this contract. With 32 years of experience, he has specialized in historic architecture and preservation since 2002 and has been with HRG since 2011. His expertise includes historic structure reports, building conservation, rehabilitation tax credit projects, and compliance with the Secretary of the Interior's Standards and the State Historic Building Code. John has provided preservation planning and technical consultation for civic, educational, and cultural facilities across California, including modernization efforts for LAUSD campuses.



Arup – Brian McLaughlin, PE, Associate Principal, Americas Fire & Life Safety

Brian McLaughlin will lead Arup's fire and life safety services for this contract. With more than 23 years of experience at Arup, he has delivered holistic fire safety and code consulting for nearly 400 projects worldwide, including airports, high-rise buildings, cultural facilities, and transit infrastructure. Based in Los Angeles since 2005, Brian has led the firm's local Fire Engineering Practice and now directs fire safety strategy across the Americas. His expertise includes performance-based design, smoke and evacuation modeling, hazardous materials, and integration of fire and life safety systems into complex public projects.

Relevant Work



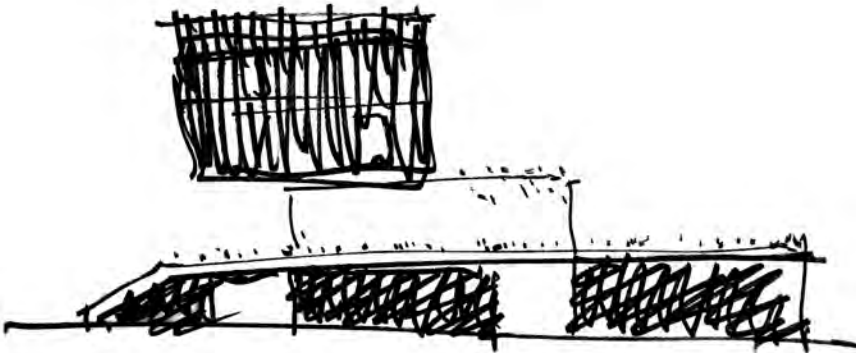
PAUL MURDOCH ARCHITECTS + TEAM



City of Los Angeles On-Call Slauson Connect Recreation Center

The Slauson Connect Recreation Center, delivered as part of an On-Call contract with the City of Los Angeles, increases much-needed recreational open space, youth development classrooms, and childcare opportunities in underserved South Los Angeles. Envisioned by Council District 9 as a net zero energy landmark building, the project demonstrates how civic investment can catalyze revitalization along the Slauson Corridor. Designed as a community oasis, the Center provides a place of history, health, and social activity while linking more broadly to the city through Metro's Bicycle Path Network and the Rail to River Active Transportation Corridor.

The program includes a childcare center, afterschool program, and recreation classrooms with associated support spaces, a public lobby, circulation, and an extensive roof garden. Prefabricated modular construction under a design-build delivery was selected to control costs and reduce schedule duration while advancing sustainability and resiliency goals.





Slauson Recreation Center

The project site is located within a former rail right-of-way along Slauson Avenue in South Los Angeles. The urban infill, brownfield site, surrounded by industrial, commercial, and residential uses, is approximately 81' wide by 1,250 feet long totaling 2.29 acres. 31' of the site depth is occupied by LA Metro's Bicycle Path Network.

Project Information

Location: San Pedro, CA

Owner:

Los Angeles Bureau of Engineering and Los Angeles Department of Parks & Recreation.

Services Provided:

Full Architectural Design, , landscape and open space design.

Completion

2025

Team Members

Paul Murdoch, Milena Murdoch, Eric Cunningham, Albert Orozco

Contract Value:

\$25Million

Agency Project Manager:

Wayne W. Chow
 Architectural Division
 Bureau of Engineering | Department of Public Works
 1149 S. Broadway, Suite 830
 Los Angeles, CA 90015-2213
 Email: wayne.chow@lacity.org
 Phone: (213) 485-4365

Recognition

2023 American Architecture Award
 2023 Westside Urban Forum Public/Institutional Merit Award



County of Los Angeles On-Call MLK Medical Campus – TAY Drop-In Center

The Martin Luther King, Jr. Medical Campus Transitional Age Youth (TAY) Drop-In Center is conceived as a safe haven and supportive hub for young adults in South Los Angeles. Serving a historically underserved community, the center is both a place of refuge and a springboard for opportunity, offering counseling, social services, and life-skills programming within a welcoming, restorative environment.

Located within the County’s expanding MLK Medical Campus in Willowbrook, the two-story, 9,400 SF facility is designed to integrate seamlessly with the broader network of health, social, and educational resources. Its architecture emphasizes openness, natural light, and shared spaces – a living room, café, classrooms, and support services – reflecting the belief that environments can nurture stability, dignity, and resilience.

As part of Los Angeles County’s on-call program, the project extends the campus vision of equity and holistic care, providing a model for how civic architecture can promote wellbeing, strengthen community identity, and anchor sustainable futures for transitional age youth.





MLK Medical Campus – TAY Drop-In Center

The community of Willowbrook in South Los Angeles has been under served for decades. This project provides a much-needed center for social, educational and recreational activities in the context of a restored natural environment in what was an oil storage site. The design is a model for inclusive community engagement, social equity, public wellness and environmental stewardship.

Project Information

Location: Willowbrook, CA

Owner:

County of Los Angeles Public Works

Services Provided:

Full Architectural Design, , site planning

Completion

2023-Present (In Progress)

Team Members

Paul Murdoch, Milena Murdoch,
Eric Cunningham, Albert Orozco

Contract Value:

\$15Million

Agency Project Manager:

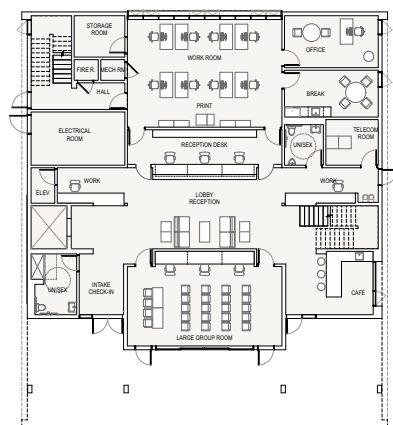
Rochelle Campomanes, RA NCARB
LEED AP
Capital Projects Manager
Los Angeles County Public Works
RECampom@lasd.org
Office: (626) 300-2391



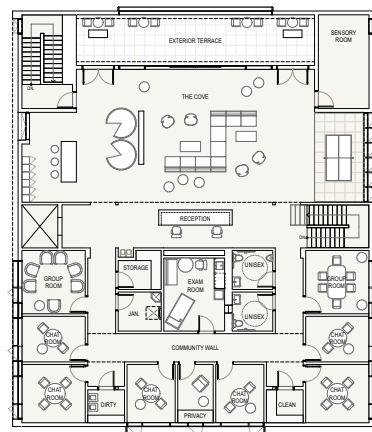
Beach Cities Health District On-Call Allcove Youth Wellness Center – Beach Cities

The Allcove Youth Wellness Center – Beach Cities is designed as a welcoming and inclusive space for young people ages 12–25 to access health, counseling, and social services in their own community. Part of the Beach Cities Health District’s Healthy Living Campus in Redondo Beach, the center provides a safe and restorative environment where youth can find connection, support, and resources that address both immediate needs and long-term wellbeing.

The 10,000 SF facility includes flexible program spaces for mental health counseling, primary care, peer support, workshops, and recreation, all organized to foster openness, natural light, and ease of access. Its design emphasizes comfort and dignity, with warm, community-oriented interiors and adaptable layouts that reflect the evolving needs of youth.

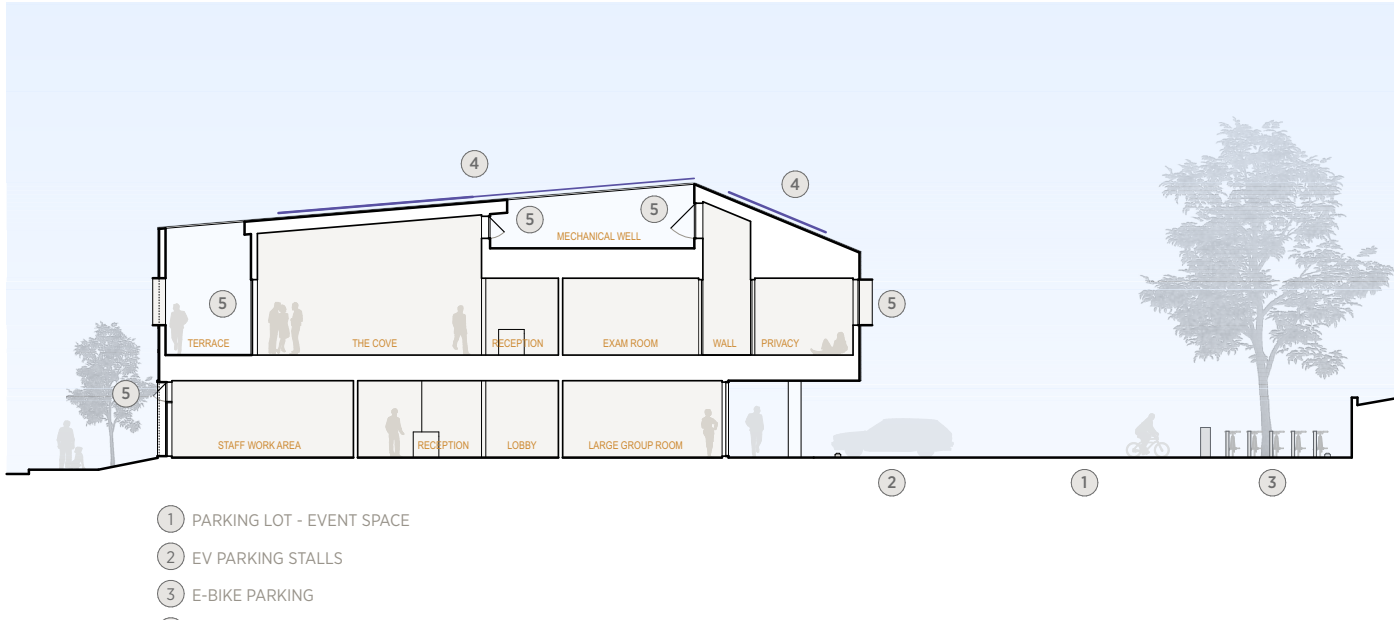


FIRST FLOOR PLAN



SECOND FLOOR PLAN





Allcove Youth Wellness Center – Beach Cities

The Beach Cities community has long recognized the need for accessible, youth-focused wellness services. This project creates a safe and welcoming environment for health care, counseling, and social connection, integrated within the Beach Cities Health District’s Healthy Living Campus. The design is a model for equity, prevention, and holistic wellness, demonstrating how community-based architecture can foster resilience and support for the next generation.

Project Information

Location: Redondo Beach, CA

Owner:

Beach Cities Health District

Services Provided:

Full Architectural Design, , site planning

Completion

2023-Present (In Progress)

Team Members

Paul Murdoch, Milena Murdoch, Eric Cunningham,

Contract Value:

\$12 Million

Agency Project Manager:

John Reser, RICS CCP LEED AP Senior Project Manager
Turner & Townsend Heery
john.reser@turntown.com
| +1 (747) 232 4247



Los Angeles World Airports On-Call LAX Departure Level Curbside Refresh Program

Los Angeles World Airports (LAWA) is currently engaged in the largest public works project in the history of Los Angeles, effectively expanding the sphere of LAX transportation and operations two miles east to the 405 freeway through their Landside Access Modernization Program (LAMP). The firm acted as an architectural advisor to the winning LAX Integrated Express Solutions public-private partnership team for the Automated People Mover (APM). The firm provided aesthetic guidance for architecture and urban design, graphic design and visualization of the proposed user experience and architecture that includes stations, inter-modal facilities, public open spaces and so-called WOW features that will animate the LAX customer experience through this prominent Los Angeles gateway.

Project Information

Location: Los Angeles, CA

Owner: Los Angeles World Airports (LAWA)

Services Provided: Architectural design I

Project Duration: 2025 – Present (In Progress)

Team Members:

Paul Murdoch, Milena Murdoch

Contract Value: \$75 Million

Agency Project Manager:

John Plunkett, P.E.

Airport Engineer I

Los Angeles World Airports, TDG

424-646-7503 (o)

jplunkett@lawa.org



Additional References

National Park Service

Jeff Reinbold
National Mall & Memorial Parks Superintendent
jeff_reinbold@nps.gov

American Jewish University

Jay Strear
Former Vice President & Director of Development
jaystrear@gmail.com

County of Los Angeles

Sean Sackett
Project Director, Department of Parks and Recreation
ssackett@bh.lacounty.gov

City of Los Angeles

Ohaji Abdallah
Assistant Division Manager
ohaji.abdallah@lacity.org

Beach Cities Health District

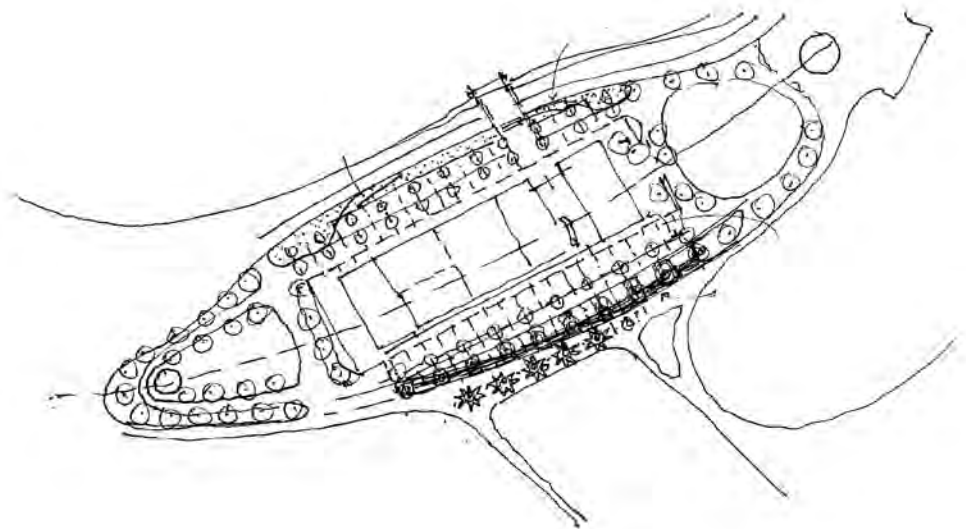
Tom Bakaly
Chief Executive Officer
tom.bakaly@bchd.org

Los Angeles World Airports

Ellen Wright
Former Director of Terminal Planning
ellenwhermosa@gmail.com

Heery International

Leslie Dickey
Former Project Director
tjaguar86@yahoo.com



Project Management Plan



PAUL MURDOCH ARCHITECTS + TEAM

Managing On-Call Contracts

On-Call Contract Experience

Our consistent track record of repeat clients is a testament to exceeding public stakeholder expectations. Current multi-year, on-call contracts with the County of Los Angeles Parks and Recreation Department, County of Los Angeles Department of Public Works, City of Los Angeles Public Works Department, US General Services Administration, repeated 5-year terms as a National Park Service IDIQ contractor and our recent on-call contract for Los Angeles World Airports, means we understand task-based contracts and working on a wide range of efforts. Our approach to managing this On-Call is informed by our experience in others where we had to perform multiple task orders concurrently, finding the resources to do so, and address a wide, unpredictable range of assignment types, thereby requiring informed and coordinated input from our client, stakeholders and subconsultants with relevant expertise. We expect to manage this contract similarly, calling on our considerable team and mutual history with BOE project delivery.

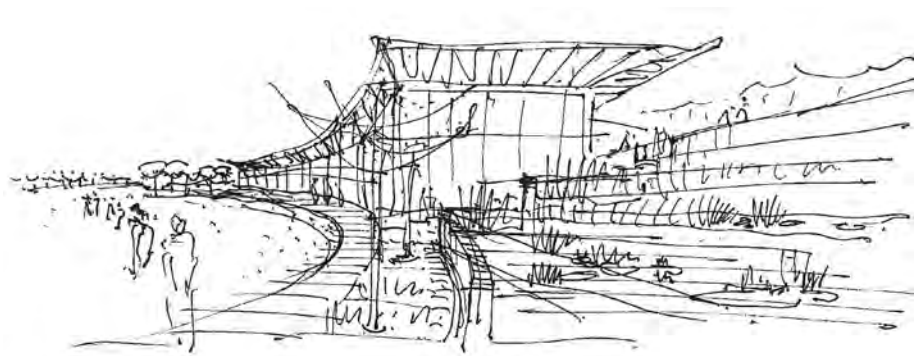
Hands-On Project Leadership

Registered architects and principals, Paul Murdoch and Milena Murdoch bring over seventy-five years of collective experience in strategic thinking, design and construction to each project. Experience with planning, programming, design and construction phases on a wide range of public and institutional projects, and longstanding relationships with a dedicated team of subconsultants, make us well suited to address project requirements and collaborate with client representatives.

Paul Murdoch leads the vision for each project as the Principal in Charge and Lead Architect. Milena Murdoch heads many of the firm's projects as Principal Project Manager. At the core of our approach for each project is the hands-on involvement and oversight of each principal on a day-to-day basis – assuring continuity through the project's development and conformance with its planning, design and budgetary goals. Our familiarity with institutional, financial reporting and project delivery requirements helps to facilitate timely project approvals.

The Project Manager reviews projects weekly to assess progress, discuss problems, and review staffing to alert the client of any problems that need resolution. During each review, the Project Manager will generate/ evaluate a report to monitor the progress of each project in relation to the established schedule.

Any required adjustments can be determined with the owner during these review sessions. Staffing assignments are adjusted as the project needs dictate. Essential to efficient and timely delivery of services is the experience of the design team with multiple agency review processes, inclusive programming and design participation by the client, and familiarity with requirements of the building type.



Project Delivery

The firm has successfully produced construction documents for both private and public projects for over 30 years. Project budgets have ranged from less than \$1 million to over \$300 million in scale and from modest low-bid projects to negotiated progressive design-build projects. Roughly 80% of our work is public using various delivery methods, so there is familiarity with the administration process required during construction. These have involved various project delivery methods that include Design-Bid-Build, Design-Build, Progressive Design-Build, P3, Lease-Leaseback, CM/GC and Negotiated Guaranteed Maximum Price.

Problem Solving

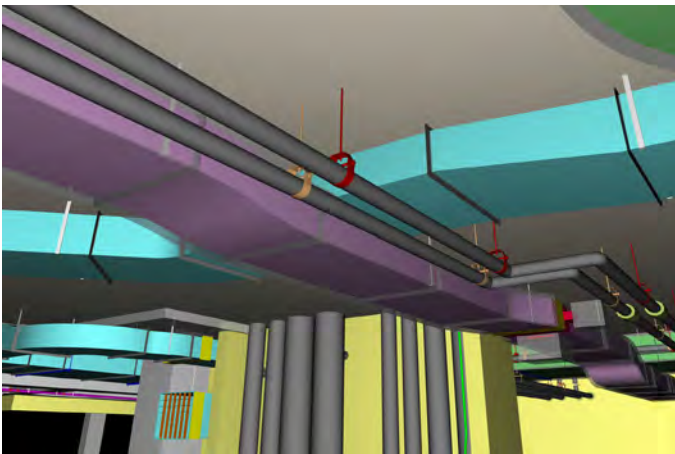
As the architects for Federal, State of California, County and civic projects, the firm is particularly well qualified for meeting public agency requirements including design excellence. We have earned a reputation for creatively reframing a given problem in a way that expands possibilities and optimizes available resources. We help public agencies with many “firsts.”

For example, to advance the State of California’s renewable energy policy goals, the firm designed the first new Zero Net Energy (ZNE) facility for the Department of General Services (DGS) and Department of Motor Vehicles (DMV). To achieve UCLA’s goal for developing molecular-level research in food science, the firm invented a new type of greenhouse laboratory. To help revitalize a community in South Los Angeles, the firm created the first public roof garden for the City of Los Angeles to provide much-needed, safe park space.

Discipline Coordination

We have a strong team of subconsultants experienced in the programming and design of relevant facilities. For each task order, we would identify and assemble a capable, diverse team of subconsultants experienced in the programming and design of relevant projects. The firm has generally worked with members of the proposed consultant team and share a common expectation for thorough documentation and a responsive process. All team members utilize compatible software to design and document their work that assists our quality assurance process. Use of BIM with consultants helps facilitate well-coordinated documents. Regular design meetings keep the team on track and milestone submittals are opportunities for careful coordination and checking.

The firm has used BIM for 20 years and now produces design and construction documents in Revit and Archicad, using advanced, three-dimensional virtual models in the design process. Study of daylight and energy modeling is also integrated into the design process. Microsoft Project is typically used for project scheduling.



Resource Availability & Ability to Deliver on High Volume of Project Assignments

Through cultural, education, recreation, and transportation work under on-call and IDIQ contracts, the team has long-term working relationships with the many public agencies.

We have completed over fifty task orders under two on-call contracts with NPS for the \$56 million, 2,200-acre Flight 93 National Memorial, implemented over a multi-phased fifteen-year period, produced a master plan for a \$300 million, 2-phased Healthy Living Campus for BCHD, while also executing multiple, simultaneous task orders that have ranged from small accessibility improvements to conceptual design and feasibility studies, including 18 task orders for LAWA. We have been able to add staff as necessary to address project requirements and through relationships with larger firms who can deepen our bench. Named a Top 50 US Firm by Architect Magazine, it was noted: “Paul Murdoch Architects shows that small firms can compete with big multinationals.”

Ability to Navigate a Project through a City’s Municipal Plan Check Process

An early proponent of sustainable, transportation-oriented development, we are primarily focused on facilities that serve communities, with a firm belief that public work involves the most important services we can render as architects. We have successfully lead projects for federal, state, county and municipal agencies having jurisdiction. We conduct a rigorous process that is front-loaded with research of municipal requirements through a collaborative, pro-active process of dialogue with stakeholders and agencies. We also strive to build teams with subconsultants who have relationships and experience with the local conditions and decision makers in a community.

Experience Developing Projects within a Political Environment

Good collaborators, facilitators, and teammates, we have a track record of helping to meet the programmatic and infrastructural needs of rapidly expanding urban populations through public placemaking. We generally include a professional community engagement facilitator in our project team who has strong relationships with the community in which a project occurs. All of our public projects use outreach methods to solicit the input and involvement of local stakeholders throughout an iterative process of design and feedback.

Budgeting, Cost & Quality Control

The principals recognize the essential design management responsibilities of helping to define project parameters and then adhere to the approved budget and schedule with the design. We review cost/benefit evaluations relative to function, flexibility of use, durability and your available fiscal resources.

<u>GROSS FLOOR AREAS</u>	<u>OPTION-A</u>	<u>OPTION-B</u>	<u>OPTION-C</u>	<u>TELECOM-A</u>	<u>TELECOM-B</u>	<u>TELECOM-C</u>	<u>Concourse-0</u>	<u>Terminal-9</u>
Remodel Offices (SF)	70,000	95,000	58,000	26,300	26,300	-	-	-
New Offices (SF)*	-	19,040	43,240	-	44,000	72,000	70,000	70,000
New Parking Garage (SF)	-	-	-	-	49,000	49,000	-	-
	70,000 SF	114,040 SF	101,240 SF	26,300 SF	119,300 SF	121,000 SF	70,000 SF	70,000 SF
<u>GFA % MAKE-UP</u>								
Remodel Offices	100%	83%	57%	100%	37%	0	0	0
New Offices	0	17%	43%	0	63%	100%	100%	100%
TOTAL ROM COST (\$M)	\$25M	\$107M	\$114M	\$6.3M	\$70M	\$85M	\$75M	\$81M
FF&E Allowance	\$2.5M	\$4M	\$4M	\$1M	\$2.5M	\$2.5M	\$2.5M	\$2.5M
BUDGET RANGE	\$28 - 168 million			\$8 - 88 million			\$78 - 84 million	

The firm typically works with a professional cost consultant to generate cost estimates at interim stages from coordinated milestone documents to assure adherence with design intent and to achieve accurate estimating. Consequently, cost contingencies are minimized, thus creating a more predictable and competitive range of bids for a project. Often there are varied aspirations for a project, so magnitudes of cost are defined through a value engineering analysis that are commensurate with a range of opportunities for a project. This helps the owner decide the best value for the project expectations.

The construction change order rate due to errors and omissions for our projects over the last 10 years has averaged less than 2% of construction cost. This demonstrates the quality of the firm's documents despite the originality of many of its projects. Good coordination with sub-consultants reduces change orders and delays. If the documents presume the Contractor to know, interpret or assume the design intent of the building instructions, the drawings are probably not thorough or complete enough, so this is addressed through a rigorous internal Quality Assurance/ Quality Control process that typically includes a third-party review. A Documents Quality Manager reviews each project at milestones for technical compliance and coordination.

Task Order Organization

When considering a new Task Order assignment, the Prime Consultant leads will assemble appropriate lead staff to discuss and define the best team of consultants for the Task Order relative to design, planning, technical capability, availability and inclusivity performance and goals. The Principal Project Manager will coordinate the proposal, and with the Principal-in-Charge, will negotiate with the subconsultants and BOE to come to terms.

Our Principal Project Manager oversees timely production and creating a controlled design process working closely with BOE and our Senior Design Manager. Regular and milestone meetings are scheduled in coordination with Hermosa Beach staff and timelines. Fundamental workflow of design deliverables incorporating the control over design objectives, inputs, outputs, quality assurance and cost management. To achieve this, we incorporate several rounds of internal reviews and client input reviews for BOE and stakeholders.

The workflow creates a clear structure and schedule for decision making from the outset, while the proposed internal reviews enhance the best value for the project. Every client review is preceded by an internal review of our review board to present coherent documents and provide feedback to the team and quality reassurance. The following diagram represents a general workflow and collaboration process.



To keep the project within the project scope and on track we provide BOE with an up-to-date Project Management Plan (PMP) in line with the statement of work. This plan is not just a deliverable but the guideline for the project team and the benchmark for all progress reports. We enhance the PMP and the Progress Report with cost management, that is regularly updated with the development of the project.

Permitting

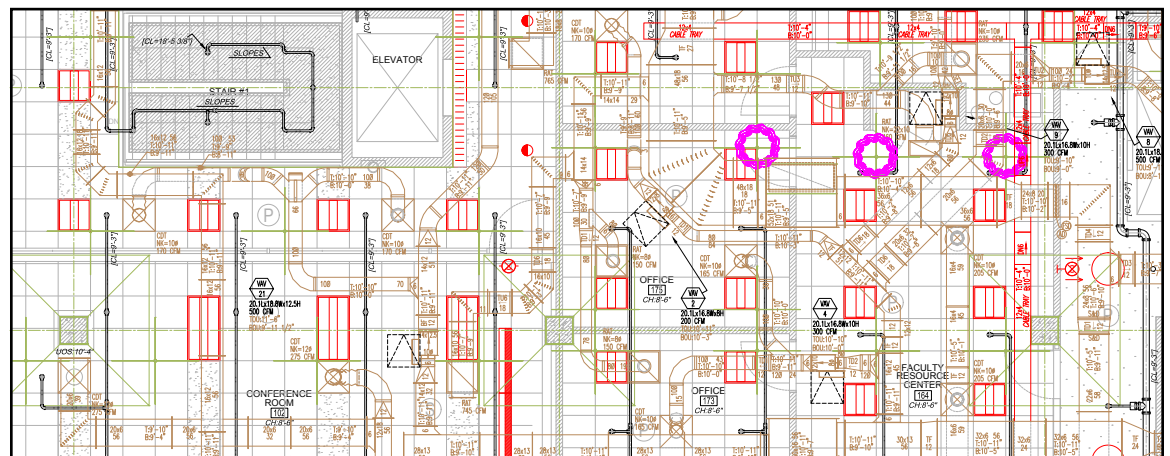
Our team provides an understanding of all applicable codes and design requirements applicable to BOE projects and processes needed to execute the work. This includes the experience and ability to obtain permits and approvals from regulatory agencies, authorities having jurisdiction (AHJ), such as the Los Angeles Department of Building & Safety (LADBS), Los Angeles Fire Department (LAFD), Los Angeles Bureau of Engineering (LABOE), Los Angeles Department of Water & Power (LADWP), Los Angeles Department of Transportation (LADOT). Paul Murdoch + Team bring decades of experience coordinating work across and within the myriad departments at the City, County, Regional and Federal levels.

Proximity

Each of the Applicant team leadership firms have a presence in Los Angeles and the ability to attend meetings and participate in site visits.

We understand that the Contracted Firms will be eligible to be awarded Project(s)- specific Task Orders to provide services as required to support BOE's capital projects, including planning, design, architecture, engineering, site-investigations, permitting and agency approvals, professional support during bidding and procurement stages, construction administration support, and a wide range of technical services.

Paul Murdoch Architects has carefully reviewed the RFQ, amendments and associated responses to questions to submit a fully compliant statement of qualifications that addresses all the requirements requested in the RFQ. We are an architecturally led team under direction of our Principal in Charge and Principal Project Manager, BOE's primary points of contact for all design aspects.



Required Forms



PAUL MURDOCH ARCHITECTS + TEAM



of Consultant's disclosure obligations in accordance with the City's Conflict of Interest Code.

City Initials _____

Consultant Initials J. Murdoch

OR

By their initials next to this paragraph, City and Consultant hereby acknowledge that Consultant is not a "consultant" for the purpose of the California Political Reform Act because Consultant's duties and responsibilities are not within the scope of the definition of consultant in Fair Political Practice Commission Regulation 18700.3(a) and is otherwise not serving in staff capacity in accordance with the City's Conflict of Interest Code.

City Initials _____

Consultant Initials J. Murdoch

IN WITNESS WHEREOF the parties hereto have executed this contract the day and year first hereinabove written.

CITY OF HERMOSA BEACH CONSULTANT

[MAYOR/CITY MANAGER] By: NAME/TITLE
Paul Murdoch President

ATTEST:

Myra Maravilla, City Clerk Taxpayer ID No.
95-4335445

APPROVED AS TO FORM:



, City Attorney

6.2 Required Forms

6.2.1 Certification of Qualifications

RFQ #: _____

The undersigned hereby submits its statement of qualifications and agrees to be bound by the terms and conditions of this Request for Qualifications (RFQ).



- Proposer declares and warrants that no elected or appointed official, officer or employee of the City has been or shall be compensated, directly or indirectly, in connection with this statement of qualifications or any work connected with this statement of qualifications. Should any agreement be approved in connection with this Request for Qualifications, Proposer declares and warrants that no elected or appointed official, officer or employee of the City, during the term of his/her service with the City shall have any direct interest in that agreement, or obtain any present, anticipated or future material benefit arising therefrom.
- By submitting the response to this request, Proposer agrees, if selected to furnish services to the City in accordance with this RFQ.
- Proposer has carefully reviewed its statement of qualifications and understands and agrees that the City is not responsible for any errors or omissions on the part of the Proposer and that the Proposer is responsible for them.
- It is understood and agreed that the City reserves the right to accept or reject any or all statement of qualifications and to waive any informality or irregularity in any statement of qualifications received by the City.
- The statement of qualifications response includes all of the commentary, figures and data required by the Request for Qualifications.
- The statement of qualifications shall be valid for 90 days from the date of submittal.
- Proposer acknowledges that the City may issue addendums related to this RFO and that the proposer has reviewed the following addendums which have been issued:
Addendum: _____
Addendum: _____
Addendum: _____
Addendum: _____
- Proposer further acknowledges the provisions of any addendums issued have been incorporated into their statement of qualifications.

Signature of Authorized Representative:
J. Murdoch

Printed Name and Title:
Paul Murdoch



6.2.2 Non-Collusion Affidavit

RFQ #: _____

The undersigned declares states and certifies that:

- This statement of qualifications is not made in the interest of or on behalf of any undisclosed person, partnership, company, association, organization or corporation.
- This statement of qualifications is genuine and not collusive or sham.
- I have not directly or indirectly induced or solicited any other Proposer to put in a false or sham statement of qualifications and I have not directly or indirectly colluded, conspired, connived, or agreed with any other Proposer or anyone else to put in a sham statement of qualifications or to refrain from submitting to this RFQ.
- I have not in any manner, directly or indirectly, sought by agreement, communication, or conference with anyone to fix the rate schedule price or to fix any overhead, profit or cost element of the rate schedule price or to secure any advantage against the City of Hermosa Beach or of anyone interested in the proposed contract.
- All statements contained in the statement of qualifications and related documents are true.
- I have not directly or indirectly submitted the rate schedule price or any breakdown thereof, or the contents thereof, or divulged information or data relative thereto, or paid, and will not pay, any fee to any person, corporation, partnership, company, association, organization, RFQ depository, or to any member or agent thereof, to effectuate a collusive or sham statement of qualifications.
- I have not entered into any arrangement or agreement with any City of Hermosa Beach public officer in connection with this statement of qualifications.
- I understand collusive bidding is a violation of State and Federal law and can result in fines, prison sentences, and civil damage awards.

Signature of Authorized Representative:
J. Murdoch

Printed Name and Title:
Paul Murdoch



6.2.3 Compliance with Insurance Requirements

RFQ #: _____

The selected consultant will be expected to comply with the City's insurance requirements contained within this RFQ.

The undersigned declares states and certifies that:

1. Proposer agrees, acknowledges and is fully aware of the insurance requirements as specified in the Request for Qualifications.
2. If selected, proposer agrees to accept all conditions and requirements as contained therein.

Signature of Authorized Representative:

Paul Murdoch

Printed Name and Title:

Paul Murdoch



6.2.4 Acknowledgement of Professional Services Agreement

RFQ #: _____

The selected consultant will be expected to comply with and sign the City's Professional Services Agreement. Proposers should identify and/or indicate any exceptions to the Sample Professional Services Agreement included in Section 6.2. The City Attorney or their designee retains the discretion to accept or reject proposed exceptions or modifications to the City's Professional Services Agreement.

1. Proposer agrees, acknowledges and is fully aware of the conditions specified in the City's Sample Professional Services Agreement.
2. Proposer agrees to accept all conditions and requirements as contained therein with exceptions noted as follows:

Signature of Authorized Representative:

Paul Murdoch

Printed Name and Title:

Paul Murdoch



City of Hermosa Beach

Civic Center, 1315 Valley Drive, Hermosa Beach, California 90254-3885

ADDENDUM No. 1

On-Call Professional Architectural Services RFQ No. 25-003

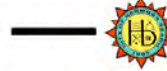
DATE: September 8, 2025

TO: ALL PROSPECTIVE PROPOSERS

Please note the questions and answers for the Request for Qualifications indicated above.

PROPOSAL SUBMITTAL: The deadline to submit qualifications **HAS NOT** changed. The deadline to submit qualifications is still September 18th at 2:00 PM.

1. Will the City contract directly with a geotechnical consultant? Or is it expected that the prime consultant will hire and manage a geotechnical subconsultant? There could potentially be an insurance issue for the architect to carry geotech?
 - A. The City is seeking consultants, or teams of consultants, that are capable of providing the breadth of services as detailed in the scope of work. It is expected that the architect provides specialty design services as part of the proposed team (could be a sub-consultant) as needed for typical City facility and other municipal projects including geotechnical engineering.
2. The FY 2025-26 Capital improvement Program doesn't appear to be posted on the City's website. Could you provide the upcoming projects/information or confirm when the content will be available online?
 - A. Please see the link to the FY 2025-26 Capital Improvement Program found within the City's budget. <https://stories.opengov.com/hermosabchca/published/YwDVMX7dUv>
3. Can the City clarify whether the \$1M limit is per consultant team for the entire 3-5-year contract period, or is it \$1M per consultant team per year (i.e., potentially \$3-5M total per consultant team)?
 - A. The City intends to award up to 3 contracts, at a value not to exceed \$1,000,000 each for the entire 3-5 year period.
4. Under 3.2.5 Relevant Experience and References, would the city consider past on-call experience completed for public agencies other than municipalities? For



City of Hermosa Beach

Civic Center, 1315 Valley Drive, Hermosa Beach, California 90254-3885

example, state and/or federal agencies?

- A. The City prefers prior municipal experience but will consider experience with other public entities.
5. On page 19-20, the RFQ states "References for at least three (3) projects completed as part of an on-call contract within the last five (5) years is required." Do the projects completed as part of an on-call contract all have to be for/with municipalities? We have on-call contracts with both municipalities and non-governmental or private sector entities. However, our best examples of work are with those non-governmental/private sector clients. (Part of why we are responding to this RFQ is to increase our experience base with municipalities such as Hermosa Beach.) Would City Staff accept and consider three relevant projects that were with non-municipal on-call contracts?
 - A. Yes. The City prefers prior municipal experience but will consider experience within the private sector. Please list the projects you feel best represent your firm's relevant experience in line with the City's objectives articulated in the subject RFP
 6. Can you tell us what architectural project you envision under those scope for the next three years?
 - A. Please see the link to the FY 2025-26 Capital Improvement Program found within the City's budget. <https://stories.opengov.com/hermosabchca/published/YwDVMX7dUv>



City of Hermosa Beach

Civic Center, 1315 Valley Drive, Hermosa Beach, California 90254-3885

ACKNOWLEDGEMENT OF ADDENDUM No. 1 On-Call Professional Architectural Services RFQ No. 25-003

Complete and sign this acknowledgement form. Submit and enclose the acknowledgement in your proposal. Failure to do so may result in disqualification of your firm's proposal.

The undersigned acknowledges receipt of Addendum No. 1 dated September 8, 2025.

ATTEST: Paul Murdoch
Principal: _____
Address: 6310 San Vicente Blvd. Suite 400, Los Angeles CA
Paul Murdoch
By: _____
Title: President

Printed on: 9/24/2023 4:58:13 PM

To verify most current certification status go to: <https://www.caleprocure.ca.gov>



Office of Small Business & DVBE Services

Certification ID: 1791352

Legal Business Name: PAUL MURDOCH ARCHITECTS

Doing Business As (DBA) Name 1: PAUL MURDOCH ARCHITECTS

Doing Business As (DBA) Name 2:

Address: 6310 San Vicente Boulevard Suite 400
Los Angeles
CA 90048

Email Address: paul@paulmurdocharchitects.com

Business Web Page: <https://www.paulmurdocharchitect.com>

Business Phone Number: 310/358-0993

Business Fax Number:

Business Types: Service

Certification Type	Status	From	T
SB(Micro)	Approved	07/05/2023	0

Stay informed! KEEP YOUR CERTIFICATION PROFILE UPDATED!
-LOGIN at CaleProcure.CA.GOV

Questions?
Email: OSDSHELP@DGS.CA.GOV
Call OSDS Main Number: 916-375-4940
707 3rd Street, 1-400, West Sacramento, CA 95605

Home - My Business Profile

For any questions regarding certifications please contact the Bureau of Contract Administration, Office of Contract Compliance at bca.certifications@cityofla.org

Certification

Name	Status	Expiration Date
SLB OR LSB: SMALL LOCAL BUSINESS OR LOCAL SMALL BUSINESS	Verified	12/1/2024
SBE: SMALL BUSINESS ENTERPRISE (PROPRIETARY)	Verified	12/1/2024
EBE: EMERGING BUSINESS ENTERPRISE	Verified	12/1/2024
SBE: SMALL BUSINESS ENTERPRISE (LOS ANGELES)	Verified	12/1/2024
LBE: LOCAL BUSINESS ENTERPRISE (LOS ANGELES)	Verified	6/1/2027

CITY OF LOS ANGELES

BUSINESS SERVICES

- Business Source Centers
- Business Tax Resources
- Minority Business Development Agency
- Office of Small Business
- City of Los Angeles Green Business Program

A SERVICE BROUGHT TO YOU BY

OFFICE OF PROCUREMENT
CITY OF LOS ANGELES

INNOVATE
CITY OF L.A.

© Copyright 2023 City of Los Angeles. All rights reserved.

Home - My Business Profile

Paul Murdoch Architects

Information

ID: 3802

Hours of Operation

Email

Phone: (310) 358-0993

Registered as a Prime & Sub

Non-Profit: No

Sole Proprietor: No

Business Structure

Certification: EBE, LBE, SBE(LA), SBE(Proprietary), SLB, VSB(E) Harbor, LBE(Harbor)


BTIC Number: 000088769-0001-8

Tax ID: 95-4335445

California Entity Number

License Numbers

PAUL MURDOCH ARCHITECTS + TEAM



**City of Hermosa Beach
Department of Public Works**

Request for Qualifications (RFQ) NO. 25-003
On-Call Professional Architectural Services

September 18, 2025

Rate Sheet

Rate Sheet

2025 Hourly Rate Schedule – City of Hermosa Beach On-Call Architectural Services

Paul Murdoch Architects (Prime Consultant)

Principal in Charge – Paul Murdoch – \$300

Principal Architect – \$285

Principal Project Manager – Milena Murdoch – \$285

Senior Project Manager – \$220

Project Manager – \$180

Senior Project Architect – \$190

Project Architect – \$180

Senior Project Designer – Eric Cunningham – \$185

Project Designer – Albert Orozco – \$125

Administration – \$90

PBS Engineers (Mechanical, Electrical, Plumbing, Fire Protection, Technology)

Principal – \$295

Associate Principal – \$250

Associate – \$210

Senior Engineer – Kunal Shah – \$190

Engineer – \$150

Designer – \$120

Administrative – \$95

Rate Sheet

Marx | Okubo Associates (Condition Assessment / Building Evaluation)

Principal – Mark Hulme – \$310

Senior Project Manager – \$250

Project Manager – \$190

Associate / Architect – \$150

Administrative – \$95

VCA Engineers (Civil Engineering)

Principal – Virgil Aoanan – \$285

Senior Civil Engineer – \$240

Civil Engineer – \$190

Designer / Technician – \$135

Administrative – \$100

MIG (Landscape Architecture & Planning)

Principal – Jennifer Zell – \$275

Senior Landscape Architect – \$220

Landscape Architect – \$185

Designer – \$145

Administrative – \$95

Rate Sheet

Mark Thomas & Company, Inc. (Surveying & Engineering)

Principal – \$500

Senior Project Manager – \$365

Project Manager – Chris Riehle – \$310

Civil Engineer – \$245

Survey Technician – \$185

Administrative – \$95

Historic Resources Group (Historic Preservation)

Principal – Christine Lazzaretto – \$250

Senior Architectural Historian – \$190

Project Manager – \$160

Associate / Staff – \$125

Administrative – \$95

Labib Funk + Associates (Structural Engineering)

Principal – Chuck Whitaker – \$290

Senior Structural Engineer – \$240

Structural Engineer – \$190

Designer / Technician – \$140

Administrative – \$100

Rate Sheet

Cumming Group (Cost Estimating & Program Management)

Principal – Raj Adusumalli – \$295

Senior Cost Manager – \$250

Cost Manager – \$200

Estimator – \$150

Administrative – \$100

Geocon West (Geotechnical Engineering & Environmental Services)

Principal – Jelisa Adams – \$280

Senior Geotechnical Engineer – \$240

Project Engineer – \$190

Staff Engineer / Technician – \$145

Administrative – \$95

Arup US, Inc. (Fire & Life Safety, Engineering)

Principal – \$500

Associate Principal – Brian McLaughlin – \$375

Associate – Ted Moyle – \$285

Senior Engineer II – Mackenzie Hill – \$250

Senior Engineer I – \$205

Engineer III – \$175

Engineer II – \$155

Engineer I – \$135

Administrative – \$125