



August 30, 2024 • 6:00 PM

# PROPOSAL

714 W Olympic Boulevard, Suite 609  
Los Angeles, CA 90015

3900 Fifth Avenue, Suite 310  
San Diego, CA 92103



Mobility  
Solutions  
for our  
Changing  
World

CITY OF HERMOSA BEACH

## ON-CALL TRANSPORTATION PLANNING AND TRAFFIC ENGINEERING SERVICES

RFQ NO. 24-002



# Cover Letter

August 30, 2024



**Attention: Andrew Nguyen**  
City of Hermosa Beach  
1315 Valley Drive  
Hermosa Beach, CA 90254



**RE:** Response to RFQ No. 24-002

Dear Mr. Nguyen and Members of the Evaluation Panel:

CR Associates (CRA), a California corporation, is thrilled to present our qualifications and enthusiastic about the opportunity to support the City of Hermosa Beach (City) with **On-Call Transportation Planning and Traffic Engineering Services**. Our team is composed of professionals with extensive experience in similar on-call programs, offering the ideal combination of exceptional project management, planning, and engineering expertise required for all task orders, along with the following benefits.

**A responsive and award-winning contract manager.** Throughout my 26-year professional career, building partnerships and ensuring client satisfaction have been central to my approach. As the contract manager, I take pride in being highly responsive to client needs and encourage you to reach out to our references to hear firsthand about the level of attention and quality that the City can expect from our team. I am deeply passionate about enhancing community safety, accessibility, and efficiency across all modes of travel. I have led a wide range of multimodal planning and engineering projects, from small-scale site evaluations to comprehensive corridor studies and citywide plans, many of which have earned awards at both regional and state levels. *I am particularly excited about this on-call contract, as I look forward to the opportunity to enhance safety and mobility in this wonderful city where I spent much of my teenage years!*

**An experienced and versatile team.** CRA has thoroughly reviewed the scope of services outlined in the RFQ, and we are confident that our in-house team is equipped to deliver any project of any size under this on-call contract. In assembling our team, we prioritized depth and flexibility to provide the City with the expertise required for the diverse range of services anticipated. Our task leads are highly qualified and recognized as industry experts in planning and designing transportation facilities. Detailed descriptions of our key staff and their qualifications are included in this SOQ. As a team, we excel at working efficiently and effectively together to help our clients optimize their resources and achieve the best results.

**A proven approach to managing on-call contracts.** Our team of experienced task leads will be assigned to manage each task order based on its type and complexity. This structure allows me, as the contract manager, to remain engaged with all assignments while the task leads handle the day-to-day management of each individual task order. This approach ensures that our resources are utilized efficiently and cost-effectively, while balancing the demands of rigorous schedules across concurrent task orders.

*CR Associates is a certified Disadvantage Business Enterprise (DBE) and Small Business Enterprise (SBE).*

*We acknowledge the addendum posted on August 15, 2024.*

714 W Olympic Boulevard, Suite 609 • Los Angeles, CA 90015 • [www.cramobility.com](http://www.cramobility.com)



Thank you for the opportunity to submit our qualifications to support the City in its transportation planning and traffic engineering needs for years to come. I personally commit to being available and responsive to your requests throughout the duration of this contract. As your primary point of contact, I can be reached at [mchen@cramobility.com](mailto:mchen@cramobility.com) or on my cell phone at 619-318-4664. I am authorized to enter into an agreement on behalf of CR Associates.

Sincerely,

**CR ASSOCIATES**

**Monique Chen, TE**  
Contract Manager & Principal-in-Charge



*We look forward to the opportunity to enhance safety and mobility in this wonderful city!*

# TABLE OF CONTENTS

Cover Letter ..... 1

Firm Profile ..... 3

Organizational Chart..... 4

Bios of Key Staff ..... 5

Relevant Experience + References..... 14

Project Management Plan..... 24

Required Forms..... 30





# Firm Profile

## Firm Overview

Founded in 2011, **CR Associates (CRA)** is a mobility and transportation consulting firm with over 50 local engineers and planners serving public and private clients throughout Southern California. CRA, a certified DBE and SBE, is dedicated to the planning and design of transportation systems. Our focus extends to identifying mobility enhancements that foster the development and sustainability of vibrant communities. We take a fully multimodal approach, building upon the multi-dimensional experiences of our staff, along with our dedication to serving the full range of client needs.

With our in-house transportation planning and modeling, traffic engineering and operations, civil and roadway engineering, and grant writing capabilities, CRA brings projects from the earliest planning phases to feasibility analysis and ultimately to final design. Our expectation is that young children, the elderly, low-income families, and persons with disabilities deserve equal access to roadways and the pursuit of opportunities that necessitate safely traveling across their communities.



Active Transportation Planning, Analysis, and Design



Mobility/Circulation Element Planning



Safe Routes to School/Transit



Transit Planning and Operations



Transportation Impact Studies



SB 743 Implementation



Transportation Impact Fee Program Development



Traffic Operations and Simulation



Parking Assessment and Demand Management



Curbside Management



Traffic Calming Planning and Design



Traffic Engineering Design



Civil Engineering and Design



### Chen Ryan Associates, Inc. dba CR Associates

**Monique Chen, TE** / Contract Manager & Principal-in-Charge  
 3900 Fifth Avenue, Suite 310, San Diego, CA 92103  
 mchen@cramobility.com  
 619.318.4664

#### OFFICE LOCATIONS

714 W Olympic Boulevard, Suite 609, Los Angeles, CA 90015 3900 Fifth Avenue, Suite 310, San Diego, CA 92103

Type of Business Entity: California C-Corporation

Federal Employer I.D. Number: 32-01391011

CR Associates is not totally or partially owned by another business organization or individual.

Years in Business: 12+ years

Years of Experience providing required, equivalent, or related services: 12+ years

CR Associates has never failed or refused to complete a contract.





# Organizational Chart

CRA will serve as the sole consultant, and we have assembled a robust technical team meticulously chosen to fulfill all potential tasks and service needs arising from this on-call contract.

Monique Chen, TE, and founding principal of CRA, will serve as the overall contract manager, Principal-in-Charge, and primary point of contact for the City. With 26 years of experience, Monique has demonstrated exceptional leadership and organizational skills in managing a wide range of complex transportation planning and engineering projects. She is deeply committed to client satisfaction, a priority throughout her career. Monique has successfully managed numerous multi-term on-call contracts across Southern California, earning the trust of her clients, who regard her and her team as an extension of their staff and valued advisors.

Supporting her will be a team of highly qualified task leads and talented technical staff. Adam Chase, PE, TE, will serve as the QA/QC Manager, responsible for overseeing quality assurance and quality control on all deliverables.

## City of Hermosa Beach



**Bold** = Key Staff

# Bios of Key Staff

## Monique Chen, TE

Contract Manager + Principal-in-Charge



🕒 Years of Experience: 26

BS, Civil Engineering, University of Arizona, Tucson

Professional Engineer (Traffic), California #TR2272

📍 San Diego

Monique, a founding Principal at CRA, is an award-winning project manager who has led numerous mobility planning and engineering projects where active transportation and safety play a significant role in recommendation development. As a registered engineer and seasoned mobility planner, or “planner,” Monique has overseen dozens complex and multidisciplinary projects ranging from active transportation plans, safety studies, mobility elements, corridor studies, transportation impact analyses, operational and demand assessments, and conceptual engineering, as well as master plans and specific plans. Enthusiastic, supportive, and strategic, Monique has amassed a wealth of experience providing active transportation and multimodal planning and engineering leadership and services to both public and private sector clients.

### RELEVANT EXPERIENCE

- ▶ City of San Diego Mobility Planning and Traffic Engineering As-Needed Services: Contract Manager
- ▶ L.A. Metro Countywide Planning & Development Bench: Contract Manager
- ▶ L.A. Metro Active Transportation Program Cycle 1 Delegated Projects: MLK/Gage Ave and Redondo Beach Blvd Corridors: Project Manager
- ▶ LADOT On-Call - Transportation Planning, Transit & Parking: Contract Manager
- ▶ City of Anaheim Transportation On-Call: Contract Manager
- ▶ SCAG Transportation On-Call: Contract Manager
- ▶ Kumeyaay Corridor (I-8) Comprehensive Multimodal Corridor Plan: Project Manager
- ▶ Downtown San Diego Mobility Plan: Project Manager

- ▶ Chula Vista Active Transportation Plan: Project Manager
- ▶ Wildomar Mobility Plan: Project Manager
- ▶ Oceanside General Plan Update and Smart & Sustainable Corridors Plan - Mobility: Project Manager
- ▶ San Diego Systemic Safety Analysis Report: Project Manager
- ▶ 24th Street Transit Oriented Development Overlay, National City: Project Manager

## Adam Chase, PE, TE

QA/QC Manager



Principal

🕒 Years of Experience: 25

BS, Civil Engineering, University of Massachusetts, Amherst

Professional Engineer (Civil), California #74043

Professional Engineer (Traffic), California #2594

📍 Los Angeles

Adam excels in cultivating client connections, navigating complex problems, and leading through public speaking engagements. His technical knowledge spans infrastructure, traffic, and transportation engineering, underscoring his expertise in mobility and active transportation. Adam is particularly skilled in overseeing Capital Improvement Programs and demonstrating proficiency in budgeting. Renowned for his composed demeanor and disarming nature, Adam serves as a manager, a mentor to staff, a supportive collaborator with colleagues, and an exceptional partner for clients. His contributions encompass strategic planning, funding acquisition, design, environmental processes, permitting, and project implementation.

### RELEVANT EXPERIENCE

- ▶ City of Long Beach On-Call, Civil and Traffic Engineering Services: Contract Manager
- ▶ LABOE On-Call: Contract Manager

- ▶ City of Ventura Traffic Engineering and Parking Management On-Call: Contract Manager
- ▶ City of Thousand Oaks On-Call Civil Engineering: Contract Manager
- ▶ Leucadia Boulevard Roundabout in Encinitas: Principal Civil Engineer
- ▶ Ventura Santa Paula Branch Line Trail "Rails with Trails": Project Manager
- ▶ El Cajon Main Street Green Street – Phase 1 Improvements: Principal Civil Engineer
- ▶ L.A. Metro Active Transportation Program Cycle 1 Delegated Projects: MLK/Gage Ave and Redondo Beach Blvd Corridors: MLK/Gage Corridor Design Lead
- ▶ CVAG Art and Music Line: Project Manager / Design Lead
- ▶ National City W 19th Street Greenway: Project Manager

**Jenny An, CPF, LCI, LEED Green, RA**

*Task Lead - Mobility & Safety Planning*  
Senior Planner



🕒 **Years of Experience: 20**

MS, Architecture, Andrews University

BS, Architecture, Andrews University

IAF Public Facilitator

League of American Bicyclists Certified Instructor

LEED Green Certified

Registered Architect, California #C32950

📍 San Diego

Jenny, a Senior Planner, is a cornerstone of CRA's Complete Streets and placemaking projects that aim to create transformative places by developing community visions and implementing innovative design solutions. With extensive experience delivering community-based projects and certification as a professional facilitator, Jenny possesses a wealth of knowledge related to public-facing collaterals development, program branding using social media, text-based outreach, virtual engagement, and in-person demonstration and pop-up strategies. As a project manager, Jenny leads mobility planning and

placemaking projects that help communities develop their vision and implement innovative design solutions. Through her background in architecture, urban design, project management, and construction management, she has developed strong organizational skills to smoothly move projects forward through all phases from conceptualization to implementation.

**RELEVANT EXPERIENCE**

- ▶ L.A. Metro Complete Streets Training: Project Manager
- ▶ City of San Diego Complete Streets Design Guidelines: Project Manager
- ▶ SR 86 Vision Blueprint and Complete Streets Implementation, Imperial: Project Manager
- ▶ City of Irvine Safe Routes to School Program: Project Manager
- ▶ La Mesa Boulevard Complete Streets Plan: Project Manager
- ▶ Solana Beach Safe Routes to School Plan: Project Manager
- ▶ CVAG Arts & Music Line Non-Infrastructure Program: Project Manager
- ▶ City of Riverside Safe Routes to School: Project Manager
- ▶ L.A. Metro Grant Assistant Program: Lead Grant Writer
- ▶ City of Vista Traffic Engineering On-Call: Lead Grant Writer
- ▶ City of Los Angeles Great Streets\*: Project Manager

*\* While employed at a different company.*



**Matthew Parrent, AICP**

*Task Lead - Mobility & Safety Planning*  
Senior Planner



Years of Experience: 20

MS, Architecture, Andrews University  
BS, Architecture, Andrews University

American Institute of Certified Planners (AICP), #217770

Los Angeles

Matthew is a Senior Planner with extensive experience in urban planning, urban design, transit planning, land use planning, and entitlement in the private and public sectors. He has served clients throughout Southern California by leading transportation corridor analyses, multimodal transportation facility studies, and developing objective design standards and wayfinding programs. Matthew's areas of expertise include land use planning, urban design, and transportation. He is committed to creating projects that balance the needs of the community and are implementable.

**RELEVANT EXPERIENCE**

- ▶ Anaheim Transit Master Plan: Deputy Project Manager
- ▶ L.A. Metro Grant Assistant Program: Lead Grant Writer
- ▶ Valley Boulevard Multimodal Transportation Improvement Project\*: Project Manager
- ▶ Los Angeles Union Station Master Plan and Wayfinding Program\*: Senior Planner
- ▶ Inglewood Transit Connector\*: Urban Designer, Project Manager
- ▶ Ontario Multimodal Transportation Center (MTC) Needs Assessment\*: Project Manager
- ▶ Airport Metro Connector Station Los Angeles, CA\*: Urban Designer, Planner, Assistant Project Manager for Pursuit
- ▶ Metro Vermont BRT Corridor Technical Study\*: Senior Planner, Urban Designer
- ▶ Metro NoHo-to-Pasadena BRT Corridor Technical Study\*: Senior Planner, Urban Designer
- ▶ I-710 Corridor Project Urban Design EIR/EIS\*: Planner

\* While employed at a different company.

**Andrew Prescott, AICP**

*Task Lead - Mobility & Safety Planning*  
Senior Transportation Planner



Years of Experience: 12

Master of City Planning, San Diego State University, San Diego State University

BA, International Security and Conflict Resolution, San Diego State University

American Institute of Certified Planners (AICP), #31154

San Diego

Andrew is a Senior Transportation Planner who specializes in multimodal transportation planning and safety analysis. He manages a variety of mobility projects, such as multimodal corridor plans, safety studies, active transportation plans, circulation/mobility elements, traffic studies, and health-related research. Andrew's expertise includes long-range multimodal planning, street design, collision analysis, countermeasure identification and project prioritization, community engagement, and project management. Andrew's extensive experience has honed his communication skills and consensus-building techniques, allowing him to thoughtfully collaborate with community members and agency staff on a wide range of transportation topics. His collective skill set enables him to provide valuable contributions to all project phases and usher a diverse set of projects to successful completion.

**RELEVANT EXPERIENCE**

- ▶ Clairemont Complete Corridors, San Diego: Project Manager
- ▶ Santee Active Transportation Plan: Project Manager
- ▶ Carlsbad Local Roadway Safety Plan: Project Manager
- ▶ 24th Street Transit Oriented Development Overlay (TODO): Lead Transportation Planner
- ▶ El Cajon Active Transportation Plan: Project Manager
- ▶ Corona Bicycle Master Plan: Project Manager
- ▶ Simi Valley Bicycle Master Plan: Project Manager
- ▶ National City Systemic Safety Analysis Report: Project Manager



- ▶ Comprehensive Safety Action Plan for La Jolla Band of Luiseno Indians: Project Manager
- ▶ L.A. Metro Complete Streets Training: Transportation Planner
- ▶ Wildomar Mobility Plan: Lead Transportation Planner
- ▶ Ontario Euclide Corridor Systemic Safety Analysis Report: Lead Transportation Planner
- ▶ Palm Avenue Revitalization Plan: Transportation Planner

- ▶ Los Angeles County Rail Network Integration Plan: Deputy Project Manager
- ▶ L.A. Metro 2023 Active Transportation Strategic Plan: Transportation Planner
- ▶ L.A. Metro Active Transportation Program Cycle 1 Delegated Projects: MLK/Gage Ave and Redondo Beach Blvd Corridors: Deputy Project Manager
- ▶ L.A. Metro Grant Assistant Program: Lead Grant Writer
- ▶ Simi Valley Bicycle Master Plan: Deputy Project Manager
- ▶ Murrieta Creek Regional Trail PA&ED and Final Design, Lake Elsinore: Transportation Planner
- ▶ CSU Fullerton TDM Plan: Project Manager
- ▶ City of San Diego Complete Streets Design Guidelines: Deputy Project Manager
- ▶ Corona Bicycle Master Plan: Deputy Project Manager
- ▶ Carlsbad Sustainable Mobility Plan: Transportation Planner

**Cat Callaghan, AICP**

*Task Lead - Mobility & Safety Planning*  
Senior Transportation Planner



Years of Experience: 11

Master of Urban & Regional Planning (MURP), University of California, Los Angeles

Bachelor of Architecture (BArch), Rensselaer Polytechnic Institute, New York

American Institute of Certified Planners (AICP), #317971

Los Angeles

Cat is a Senior Transportation Planner who provides strategic planning and architectural design services to municipalities, transit agencies, and campuses. Cat has a broad range of communication, artistic, and analytical skills that allow her to work with multi-disciplinary teams to develop and deliver innovative projects. She is experienced in multi-modal and public realm planning and conceptual design, alternatives analysis, public outreach and stakeholder interviews, GIS mapping and analysis, long-range planning, zoning, and visual communications. Her software expertise includes Adobe Suite, ArcGIS, Excel, and Sketchup. Terrific with community members and organizations, she is friendly, empathetic, and inclusive. Her organizational skills and conscientiousness make Cat a reliable team member and strong collaborator.

**RELEVANT EXPERIENCE**

- ▶ L.A. Metro Complete Streets Training: Transportation Planner

**Aryo Rad, PE**

*Task Lead - Conceptual Engineering & Final Design and Development Project Support*  
Principal



Years of Experience: 26

MS, Civil Engineering, California State University, Fullerton  
MS, Systems Engineering, Industrial Management Institute, Tehran

BS, Civil Engineering, Azad University, Tehran

Professional Engineer (Civil), California #81231

Los Angeles

Aryo has decades of civil engineering experience in the areas of planning, designing, permitting, and constructing transportation and capital improvement projects. He has collaborated with public works and planning departments across more than 50 municipalities and transportation agencies in Southern California. His focus spans roadways,

complete streets, bike and pedestrian facilities, utilities, and traffic design. With an exceptional project, contract, and program management history, and the ability to seamlessly bridge across disciplines, Aryo has a successful track record of leading complex, multidisciplinary, and multi- jurisdictional public works projects.

**RELEVANT EXPERIENCE**

- ▶ North Redondo Beach Bikeway Extension: Project Manager
- ▶ L.A. Metro Active Transportation Program Cycle 1 Delegated Projects: MLK/Gage Ave and Redondo Beach Blvd Corridors: Redondo Beach Blvd Corridor Desing Lead
- ▶ Los Angeles Sidewalk Improvement Program: Project Manager
- ▶ L.A. Metro Complete Streets Training: Technical Advisor State Route SR-138 Active Transportation, Palmdale: Project Manager
- ▶ El Cajon Main Street Green Street – Phase 1 Improvements: QA/QC Manager
- ▶ University Bikeway, San Diego: QA/QC Manager
- ▶ Santa Ana Boulevard and 5th Street Bikeway,: QA/QC Manager
- ▶ OC Loop – Segments D, F, and H\*: QA/QC Manager

\* While employed at a different company.

**Ross Duenas, PE**

*Task Lead - Conceptual Engineering & Final Design*  
Principal



Years of Experience: 19

BS, Civil Engineering, Florida State University

Professional Engineer (Civil), California #84324

San Diego

Ross specializes in the design of transportation and public works projects. He has led and managed many multi-disciplinary projects involving Complete Streets, Green Streets, separated bikeways,

pedestrian improvements, multi-modal safety, traffic engineering, stormwater management, and traffic calming. His extensive experience developing construction documents equips him with the ability to provide valuable insights related to constraints and opportunities early in the project lifecycle. Ross is a strategic thinker, judicious leader, supportive colleague, and effective communicator with clients and community members.

**RELEVANT EXPERIENCE**

- ▶ College Boulevard Widening Project, Oceanside: Project Manager
- ▶ El Cajon Boulevard Roundabout/Streetscape Improvements: Project Manager
- ▶ Leucadia Boulevard Roundabout in Encinitas: Project Manager
- ▶ North Park – Mid-City Bikeways Preliminary Engineering, Environmental Document and Final Design, San Diego: Project Manager
- ▶ Murrieta Creek Regional Trail PA&ED and Final Design, Lake Elsinore: Project Manager
- ▶ SANDAG A&E On-Call: Contract Manager
- ▶ San Diego Metropolitan Transit System A&E On-Call: Contract Manager
- ▶ City of El Cajon Civil Engineering On-Call: Contract Manager
- ▶ City of Chula Vista Transportation On-Call: Contract Manager
- ▶ Civic San Diego Civil Engineering On-Call: Contract Manager
- ▶ City of El Centro Civil Engineering On-Call: Contract Manager

**Tomo Takahashi, PE**

*Task Lead - Conceptual Engineering & Final Design and Development Project Support*

Senior Traffic Engineer



Years of Experience: 18

BS, Civil Engineering, Arizona State University

Professional Engineer (Civil), California #81522

San Diego

A Senior Traffic Engineer at CRA, Tomo is renowned for his proficiency in identifying innovative solutions for traffic signals, lighting, signing and striping, temporary traffic control, and Intelligent Transportation Systems (ITS). With a portfolio encompassing projects such as bikeways, roundabouts, traffic circles, express lanes, ADA upgrades, and signal interconnect systems, he has demonstrated his expertise in delivering high-impact traffic design solutions. His experience in traffic design spans the Southern California region. Tomo brings to every project an exceptional attention to detail that enables him to navigate and resolve design and construction complexities with precision and timeliness.

**RELEVANT EXPERIENCE**

- ▶ Village and Barrio Traffic Circles, Carlsbad: Lead Traffic Engineer
- ▶ Leucadia Boulevard Streetscape in Encinitas: Lead Traffic Engineer
- ▶ El Cajon Boulevard Roundabout: Lead Traffic Engineer
- ▶ Palomar Street Grade Separation, Chula Vista: Lead Traffic Engineer
- ▶ San Marcos Traffic Engineering Consulting Services On-Call: Task Order Manager
- ▶ Vista Traffic Engineering On-Call: Task Order Manager
- ▶ Otay Ranch Development, Villages 2, 3, 8, 9, 10, Chula Vista: Lead Design Engineer
- ▶ Otay Mesa Central Village Specific Plan: Lead Design Engineer
- ▶ San Diego Pure Water Genesee Avenue Median Improvements Project - Lead Traffic Engineer

**Jerard Madrigal, TE**

*Task Lead - Conceptual Engineering & Final Design*

Senior Traffic Engineer



Years of Experience: 13

BS, Civil Engineering, San Diego State University

Professional Engineer (Traffic), California #TR3044

San Diego

A Senior Traffic Engineer at CRA, Jerard has extensive experience in transportation, traffic engineering, and intelligent transportation systems (ITS) projects. Prior to joining the CRA team, he worked for several public agencies. His diverse work experience includes traffic engineering studies, safety analysis, signal timing, grant writing, traffic signal and ITS system operations, including traffic signal design and construction. Simultaneously resolute and cheerful, Jerard has led and assisted on transportation projects involving protected intersections, signing and striping improvements, traffic signals, and fiber optics design.

**RELEVANT EXPERIENCE**

- ▶ College Boulevard Widening Project, Oceanside: Lead Traffic Engineer
- ▶ Inland Rail Trail Phase 4, Vista: Lead Traffic Engineer
- ▶ Otay Ranch Village 4 Main Street Improvements, Chula Vista: Lead Traffic Engineer
- ▶ CVAG Art and Music Line: Lead Traffic Engineer
- ▶ San Marcos Traffic Engineering Consulting Services On-Call: Task Order Manager
- ▶ City of National City Civil Engineering On-Call: Lead Traffic Engineer
- ▶ South Bay Bud Rapid Transit, SANDAG\*: Lead Traffic Engineer

*\*While employed at the City of Chula Vista.*

**Phuong Nguyen, TE**

*Task Lead - Parking Studies & Programs and Development Project Support*

*Senior Traffic Engineer*



Years of Experience: 17

BS, Civil Engineering, San Diego State University

Professional Engineer (Traffic), California #TR2660

San Diego

Phuong is a Senior Transportation Engineer and the Traffic Engineering & Operations lead at CR Associates. Over his almost two decades of experience, Phuong believes in a data driven approach when providing engineering services and always continues to explore new data sources, stay up to date on the latest tools, engineering practices, and statewide/ federal regulations. Phuong is a leader in his profession in the application of Big Data to quantify pandemic/post-pandemic travel behavior and has expertise in transportation modeling, Intersection Control Evaluation, regional planning, microsimulation, parking management, and transportation equity. His commitment to excellence and equity in transportation planning and engineering empowers him to assess projects from varied perspectives, ensuring the delivery of optimal solutions and has significantly contributed to advancements in traffic analysis. His deep knowledge and passion make him an invaluable asset in the field, capable of bringing innovative and equitable solutions to the forefront of traffic engineering.

**RELEVANT EXPERIENCE**

- ▶ Chula Vista Downtown Parking Study: Project Manager
- ▶ Carlsbad Parking Study: Project Manager
- ▶ City of Encinitas Coastal Mobility & Livability Parking Study: Project Manager
- ▶ City of West Hollywood On-Call Parking Services: Contract Manager
- ▶ Port of San Diego Waterfront Parking Master Plan: Project Manager
- ▶ City of Ventura Traffic Engineering & Parking Management On-Call: Task Order Manager

- ▶ City of San Diego Mobility Planning and Traffic Engineering As-Needed Services: Task Order Manager
- ▶ Vista Traffic Engineering On-Call: Contract Manager
- ▶ San Marcos On-Call Traffic Engineering: Task Order Manager
- ▶ La Mesa Traffic Engineering On-Call: Contract Manager
- ▶ Otay Ranch Development, Villages 2, 3, 8, 9, 10, Chula Vista: Project Manager
- ▶ Lilac Hills Ranch Development Project: Project Manager
- ▶ Dozens of traffic impact studies throughout Southern California: Project Manager

**Jonathan Sanchez, PE, TE, PTOE**

*Task Lead - Parking Studies & Programs and Development Project Support*

*Senior Traffic Engineer*



Years of Experience: 10

MS, Civil (Transportation) Engineering, San Diego State University

BS, Civil Engineering, San Diego State University

Professional Engineer (Civil), California #91776

Professional Engineer (Traffic), California #2957

Professional Traffic Operations Engineer, California #5042

San Diego

Jonathan is a Senior Traffic Engineer with extensive experience in traffic impact studies, traffic engineering design plans, conceptual design, traffic operations, data collection, collision analyses, corridor studies, and multi-modal analysis. His expertise includes the application of transportation planning and traffic engineering analysis software including Synchro, VISSIM, and Highway Capacity Software (HCS). Jonathan's fluency in Spanish has contributed to CRA's translation services for community outreach events. An excellent communicator with an ability to put people at ease in a wide range of situations, he is supportive and inclusive, always taking the time to

listen to others' ideas. These traits make Jonathan a great leader, co-worker and mentor, whose clients feel comfortable and eager to collaborate with him.

**RELEVANT EXPERIENCE**

- ▶ Carlsbad Parking Study: Deputy Project Manager
- ▶ Tuna Harbor Parking Utilization Study: Lead Traffic Engineer
- ▶ City of West Hollywood On-Call Parking Services: Task Order Manager
- ▶ City of Ventura Traffic Engineering & Parking Management On-Call: Task Order Manager
- ▶ La Mesa Traffic Engineering and Grant Assistance, La Mesa, CA: Task Order Manager
- ▶ Solana Beach Traffic Engineering On-Call: Deputy Contract Manager
- ▶ Vista Traffic Engineering On-Call: Task Order Manager
- ▶ San Marcos Traffic Engineering On-Call: Task Order Manager
- ▶ Southern California Edison On-Call: Contract Manager
- ▶ National City Engineering and CIP On-Call: Task Order Manager
- ▶ Wildomar General Plan Update - Mobility: Project Manager
- ▶ El Centro General Plan Update - Mobility: Lead Traffic Engineer
- ▶ Otay Mesa Central Village Specific Plan: Project Manager
- ▶ San Diego Pure Water Program EIR - Transportation Lead
- ▶ Dozens of traffic impact studies throughout Southern California: Project Manager

**Sasha Jovanović, AICP**

*Task Lead - Parking Studies & Programs*  
Senior Transportation Planner



Years of Experience: 16

Master of City Planning, San Diego State University  
BA, Sociology and Metropolitan-Urban Studies, Augsburg University

American Institute of Certified Planners (AICP), #31753

San Diego

Sasha is a Senior Transportation Planner with valuable insight in topic areas that include mobility planning, parking, active transportation, mobility hubs, traffic safety, traffic engineering and public transportation. He has made contributions to projects within those disciplines in various creative and methodical roles, including as a writer, analyst, graphics maker, data scientist, public facilitator, and project manager. He is an experienced GIS practitioner, who over the course of his career has applied his proficiency for the benefit of many projects, developing innovative and insightful metrics and performance measures. He has contributed to the field of accessibility-based planning with the Destination-Based Parking Occupancy measure, which he pioneered for urban parking studies. Sasha is a clear communicator and a fair-minded critical thinker who sees things from the perspectives of all road users and land-use interests. Sasha's balanced orientation to transportation and parking allows him to find solutions for problems that cities and towns are facing as their transportation systems evolve.

**RELEVANT EXPERIENCE**

- ▶ San Diego Metropolitan Transit System Parking Usage and Alternative Market Study: Project Manager
- ▶ City of Tempe Mobility Hubs and TDM Program: Project Manager
- ▶ Maricopa County Multimodal Levels of Service Study: Transportation Planner
- ▶ La Mesa Complete Street Design Manual: Project Manager
- ▶ Vista Comprehensive Safety Action Plan: Project Manager

- ▶ L.A. Metro 2023 Active Transportation Strategic Plan: Lead Planner
- ▶ Coronado Active Transportation Plan: Lead Planner
- ▶ Vista Bicycle Master Plan: Lead Planner
- ▶ Chula Vista Downtown Parking Study: Project Manager
- ▶ Carlsbad Parking Study: Senior Planner
- ▶ City of Encinitas Coastal Mobility & Livability Parking Study: Senior Planner
- ▶ City of West Hollywood On-Call Parking Services: Task Order Manager
- ▶ City of San Diego Transit Priority Area Multi- Family Parking Guidelines: Lead Planner
- ▶ Chula Vista Downtown Parking Study: Traffic Engineer
- ▶ Carlsbad Parking Study: Traffic Engineer
- ▶ Port of San Diego Waterfront Parking Master Plan: Traffic Engineer
- ▶ San Ysidro Parking Study: Traffic Engineer
- ▶ San Diego Convoy District Parking Study: Traffic Engineer
- ▶ Chula Vista Active Transportation Plan: Traffic Engineer
- ▶ Dozens of traffic impact studies throughout Southern California: Traffic Engineer

**Cristian Belmudez**

*Task Lead - Parking Studies & Programs*  
Traffic Engineer



🕒 **Years of Experience: 5**

BS, Civil Engineering, San Diego State University

📍 *San Diego*

Cristian provides general and technical support for traffic impact studies, traffic operations, data collection, collision analyses, corridor studies, and multi-modal analyses. He has developed tools and software that facilitate project workflow and the delivery of precise information. Cristian’s experience includes traffic analyses for circulation elements, general plan updates, and active transportation plans. He is proficient in Synchro and Replica, and advanced in Excel and GIS. Cristian’s relationship building and guidance abilities make him a great collaborator. A skilled public speaker, he contributes to community outreach for transportation projects, and facilitates collaborations with Hispanic/Latino/a communities.

**RELEVANT EXPERIENCE**

- ▶ UCSD Scripps Institute of Oceanography Parking Structure Pro-Forma and Feasibility Study: Traffic Engineer
- ▶ San Diego Bayside Performance Center Parking Management Plan: Traffic Engineer
- ▶ Hillcrest Parking Management Plan: Traffic Engineer





# Relevant Experience + References

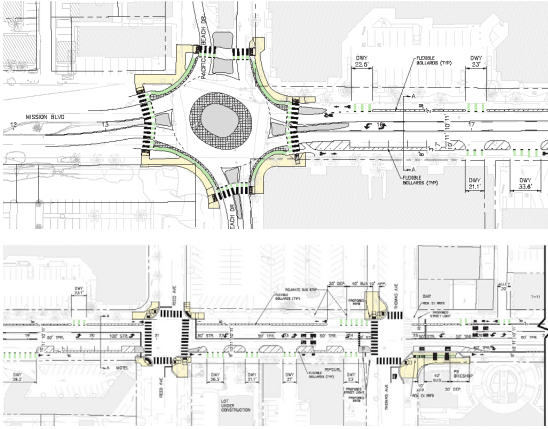
## Demonstrated Success in On-Call Contract Delivery

CRA’s extensive on-call experiences enable us to better understand and establish project approaches that will work for the City of Hermosa Beach. We understand each task order will require a team of the most suitable staff, a detailed scope of work and approach, and a realistic project schedule and budget. CRA serves as a trusted advisor to numerous agencies, managing multiple on-call contracts in Southern California (refer to the table to the right). Many of our on-call contracts have spanned multiple terms, which is a true testament to the exceptional quality of service we provide consistently to our clients. We have successfully delivered hundreds of projects similar to those anticipated under this contract.

Our firm is a known leader in the delivery of transportation planning, engineering, and design projects that can advance any mobility recommendation from “concept to concrete”. Our skillset includes careful consideration of the core modes of urban mobility – walking, bicycling, transit, and vehicular – and we are aware of the sometimes-competing priorities that each type requires of the roadway environment. This understanding is the key to a successful project outcome that is sensitive to the needs of all users.

Client/Contract	Duration
City of National City/Civil Engineering On-Call	2012-Ongoing
City of Vista/Traffic Engineering On-Call	2012-Ongoing
City of San Diego – Planning Dept./Traffic Engineering On-Call	2015-Ongoing
City of Solana Beach/Traffic Engineering On-Call	2015-Ongoing
City of Carlsbad/Transportation Planning On-Call	2018-Ongoing
City of La Mesa/Traffic Engineering On-Call	2018-Ongoing
Port of San Diego/Planning On-Call	2018-Ongoing
LA Metro/Countywide Transportation Planning & Development Bench	2018-Ongoing
City of El Cajon/Civil Engineering On-Call	2019-Ongoing
Civic San Diego/Civil Engineering On-Call	2019-Ongoing
SANDAG/On-Call Planning Services	2019-Ongoing
LADOT/On-Call Professional Services	2019-Ongoing
City of West Hollywood/On-Call Parking Services	2019-Ongoing
City of San Marcos/Traffic Engineering On-Call	2020-Ongoing
City of Lake Forest/On-Call Professional Services	2020-Ongoing
City of El Centro/Civil Engineering On-Call	2020-Ongoing
City of Long Beach/Traffic Engineering and Transportation Planning On-Call	2021-Ongoing
City of Lemon Grove/Civil Engineering On-Call	2021-Ongoing
SANDAG/A&E On-Call	2021-Ongoing
City of Chula Vista/Transportation On-Call	2021-Ongoing
SCAG/Transportation On-Call	2021-Ongoing
San Diego Metropolitan Transit System/A&E On-Call	2022-Ongoing
City of Ventura/Traffic Engineering & Parking Management On-Call	2022-Ongoing
SANDAG/Sustainable Communities On-Call	2022-Ongoing
City of Anaheim/Transportation Planning On-Call	2022-Ongoing
City of San Diego-Transportation Dept./As-Needed Engineering Services	2023-Ongoing
City of Thousand Oaks/On-Call Civil Engineering	2023-Ongoing
SGVCOG/Planning and Engineering Services	2023-Ongoing





## CITY OF SAN DIEGO AS-NEEDED TRANSPORTATION ENGINEERING SERVICES FOR THE PLANNING DEPARTMENT

📍 SAN DIEGO, CALIFORNIA

🕒 DURATION: 2015 - 2020, 2020 - 2024, 2024 - ONGOING

Working closely with City staff, CRA has provided transportation engineering and mobility planning services on community-wide efforts, corridor projects and site-specific assessments. We evaluated transportation operations for projects of varying sizes and environments, using both standard and advanced techniques. We developed multimodal analysis procedures which are utilized on all long-range planning efforts. We assisted the City in the development of new parking policies intended to alleviate parking-related cost burdens encountered by multifamily residential developers within transit priority areas. At the core of our approach to each task order is an emphasis on multimodal mobility – ensuring that each mode is considered, evaluated, and planned for. Some of the task orders issued:

- ▶ Multimodal Evaluation Guidelines
- ▶ Pedestrian and Bicycle Demand/Propensity Models
- ▶ Person Trip Generation Assessment
- ▶ Transit Priority Area (TPA) Parking Standards and Studies
- ▶ SB 743 Implementation and VMT-based Impact Fee Program
- ▶ Morena Boulevard Corridor Study
- ▶ Mobility Element Update (Southeastern San Diego and Encanto Community Plan Updates, Kearny Mesa Community Plan Update, Clairemont Mesa Community Plan Update, Barrio Logan Community Plan Update, College Area Community Plan Update, Hillcrest Focused Plan Amendment)

**MISSION VALLEY COMMUNITY PLAN UPDATE AND EIR.** CRA prepared the Mobility Element, Mobility Technical Report, and Traffic Impact Study in support of the Mission Valley Community Plan Update. The planned mobility system consists of pedestrian and bicycle facilities, transit routes and stops (bus and light-rail), and roadways, parking needs & utilizations, as well as innovative mobility features such as a potential aerial tramway and demand-responsive community circulators. An SB 743 compliant traffic analysis was performed as part of the Mobility Technical Report, documenting mode share per capita for the various alternatives. The Mission

### CLIENT PROJECT MANAGER

CITY OF SAN DIEGO

**Maureen Gardiner**  
Senior Traffic Engineer  
mgardiner@sandiego.gov  
(858) 449-9388

### CRA KEY STAFF

**Monique Chen, TE**  
Contract Manager

**Phuong Nguyen, TE**  
Task Order Manager

**Andrew Prescott, AICP**  
Transportation Planner

**Sasha Jovanović, AICP**  
Task Order Manager

**Jenny An, CPF, LCI, LEED Green, RA**  
Task Order Manager

**Jonathan Sanchez, PE, TE, PTOE**  
Task Order Manager

**Cat Callaghan, AICP**  
Task Order Manager

**Ross Duenas, PE**  
Principal Engineer

**Tomo Takahashi, PE**  
Senior Traffic Engineer

**Cristian Belmudez**  
Traffic Engineer

### CONTRACT VALUE

Up to \$2.5M for each contract

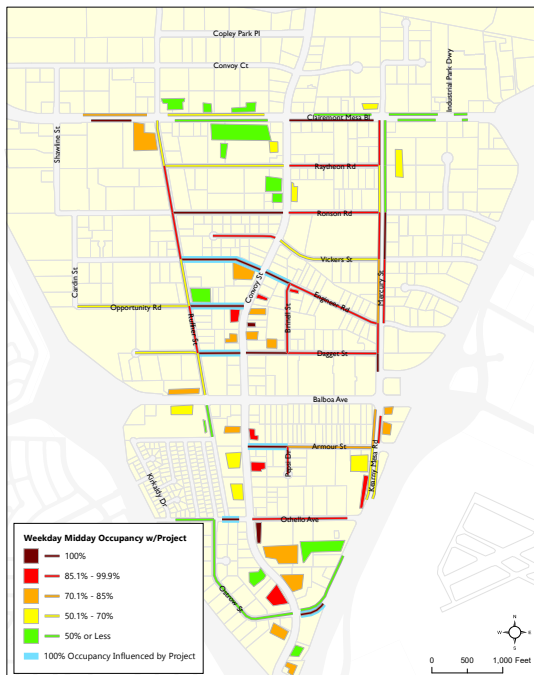


Valley Community Plan Update is the winner of this 2020-2021 San Diego American Planning Association (APA) Comprehensive Plan (Large Jurisdiction) at both local- and state-level!

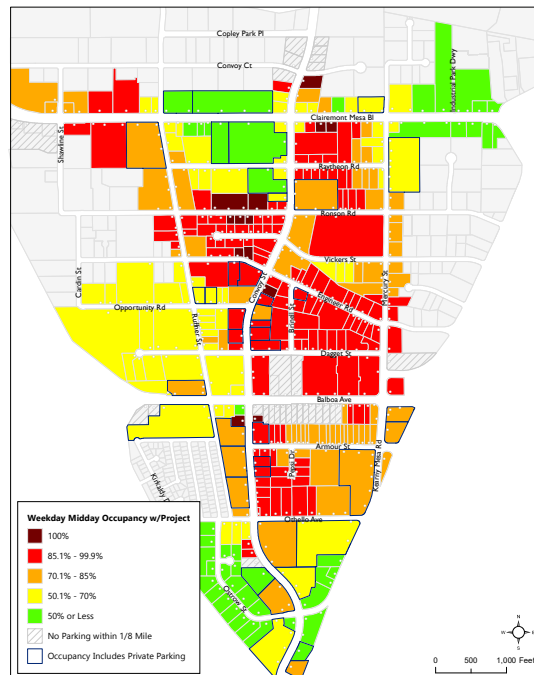
**MISSION BLVD PUBLIC SPACES AND ACTIVE TRANSPORTATION PLAN.** This project focused on identifying opportunities for public spaces, and bicycle and pedestrian improvements within the Pacific Beach community. CRA was responsible for assessing the benefits and constraints of eight corridor alternatives, as well as the potential cost and timing of implementation of the improvements. Final project recommendations consisted of traffic calming features, pedestrian and bicycle facility enhancements, emergency vehicle access improvements, and traffic control modifications, including a one-lane roundabout. A prioritization process was employed to identify high priority projects.

**COMPLETE STREETS DESIGN MANUAL.** The Complete Streets Design Manual 2.0 provides guidance for Complete Streets implementation in San Diego. It draws upon the latest guidance from FHWA, NACTO, and CA MUTCD, and adopted successful elements from other Complete Streets plans around the country. Our team also led the development of a decision-making framework tailored to the City’s zoning and planning practices. The Street Design Manual 2.0 includes best practices, qualitative, and quantitative guidelines for pedestrian and bicycle facilities, traffic calming design, and ADA design for use in public and private project review and implementation.

**CONVOY CORRIDOR PARKING STUDY.** CRA conducted a parking analysis in the Convoy Corridor District in anticipation of installing a Class IV bikeways on Convoy Street. Utilizing Destination-Based Parking Occupancy, a methodology developed by the firm for parking studies, CRA was able to provide a clear visual representation of parking demand by adjusting for the varying size and geographic distribution of parking sources, and accounting for a user’s navigation between parking location and destination when parking off-site. This method was applied to predict how parking demand would filter within the District given the change in supply (removal of all on-street parking on Convoy Street and add parking spaces to side-streets through angled parking conversion), and estimate potential temporal and location-based parking impacts resulting from the installation of the Class IV bikeway on Convoy Street. The Study presented this information visually to City staff and decision-makers ahead of the bikeway project’s implementation.



Kearny Mesa Parking Study  
Figure 5.3  
Weekday Midday Parking Occupancy by Supply with Project (11am - 2pm)



Kearny Mesa Parking Study  
Figure 5.4  
Weekday Midday Parking Occupancy by Destination with Project (11am - 2pm)



## LOS ANGELES COUNTYWIDE PLANNING & DEVELOPMENT BENCH

📍 LOS ANGELES, CALIFORNIA

🕒 DURATION: 2018 - 2024, 2024 - ONGOING

CRA led two disciplines on the Metro Bench: Transportation Planning and Sustainability & Active Transportation. The Bench assists in the planning and design of multimodal transportation projects and programs including short- and long-range planning and programming, regional mobility and connectivity-planning and improvements, active transportation planning, station and facility designs, system integrations, rail and bus-way projects, land use, grants management, and goods movement. CRA was recently selected again to continue assisting Metro in years to come. The following describes three of our recent task orders.

**METRO ACTIVE TRANSPORTATION PROGRAM CYCLE 1 DELEGATED PROJECTS: MLK/GAGE AVE AND REDONDO BEACH BLVD CORRIDORS.** This CRA-led project focuses on enhancing the walking and biking environments along the MLK/Gage corridors in Los Angeles as well as along Ripley/Redondo Beach Blvd in the South Bay subregion of Los Angeles County. Project recommendations aim to strengthen connections to key destinations (parks, schools, commercial centers, and employment hubs) and transit facilities like Metro Rail’s future extension to Torrance, and increase of bicycling, walking and transit ridership. Four key project phases include: comprehensive existing conditions analysis, planning studies (delay study and alternative alignment analysis), conceptual design plans, and environmental clearance. CRA, in collaboration with several community-based organizations, conducted extensive community outreach and engagement activities including surveys, large and small-scale events and pop-ups, and canvassing. Close coordination with Metro, LADOT, the cities of Redondo Beach, Lawndale, and Torrance, as well as the Los Angeles County Public Works has proven to be critical to the success of this project.

**COMPLETE STREETS TRAINING (TWO CYCLES).** For going on three years, CRA has led a training program that teaches staff from public agencies around the LA Metro region the concepts of Complete Streets, their design fundamentals, and how to develop their own Complete Streets policies. CRA developed the curriculum, training materials, reference guide and facilitates the sessions. This effort reached cities and departments all over the Southern California region

### CLIENT PROJECT MANAGER

LA METRO

**Cameron Palm**

Senior Transportation Planner  
Mobility Corridors  
palmc@metro.net  
(213) 547-4276

### CRA KEY STAFF

**Monique Chen, TE**  
Contract Manager

**Jenny An, CPF, LCI, LEED Green, RA**  
Task Order Manager

**Cat Callaghan, AICP**  
Task Order Manager

**Adam Chase, PE, TE**  
Principal Engineer

**Aryo Rad, PE**  
Principal Engineer

**Phuong Nguyen, TE**  
Senior Traffic Engineer

**Cristian Belmudez**  
Traffic Engineer

**Andrew Prescott, AICP**  
Senior Transportation Planner

**Sasha Jovanović, AICP**  
Senior Transportation Planner

**Ana Garate**  
Transportation Planner

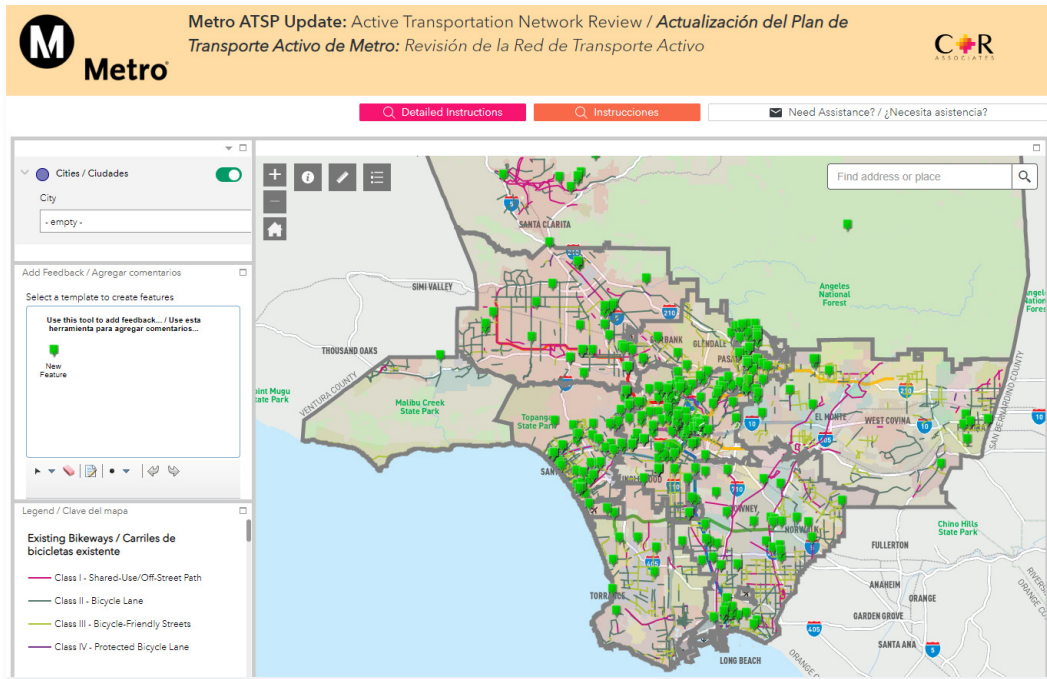
**Hailey Tyson, PE**  
Project Engineer

### CONTRACT VALUE

\$3.8M to date

with upwards of 300 agency participants in attendance. The training was held via Zoom in two, two-hour sessions. The first session focused on key elements needed to develop an implementable Complete Streets policy. The second session covered roadway traffic calming treatments, innovative pedestrian and bicycle facilities, intersection treatments, facility maintenance and lessons learned. Real-time polling, breakout small group discussions, and question and answer were typical activities used to keep the sessions interactive. The curriculum was structured to be stimulating and to encourage participation. Overwhelming interest and positive feedback led to expansion of the Complete Streets Training program with five more courses added in 2023 and 2024.

**2023 ACTIVE TRANSPORTATION STRATEGIC PLAN (ATSP).** CRA led the multi-jurisdictional, regional planning process to develop Metro's 2023 ATSP which supports the agency's mission to provide a world-class transportation system that enhances quality of life within the nation's most populated county, at 10 million people. The Plan features a regional active transportation network consisting of three components: 1,433 miles of regional bikeways, 81 pedestrian districts, and 602 First/Last Mile (FLM) areas surrounding major transit stations. With a strong emphasis on serving areas with high social equity need, our team developed alignments of the regional bicycle network and identified the pedestrian districts and FLM areas for the Plan, in collaboration with municipalities. The identification of pedestrian districts at regional scale was a particularly unique task which required technical innovation from the project team. To identify districts, CRA analyzed accessibility to over a dozen key destination types from origins all over the county (represented by Traffic Analysis Zones), assembling large, contiguous, and high scoring areas into the initial pedestrian districts. As a part of this ATSP, CRA also conducted cost estimation of the regional network components, developed an extensive prioritization process, and assembled recommendations into three implementation phases.





## CITY OF SAN MARCOS ON-CALL TRAFFIC ENGINEERING AND SUPPORT SERVICES

📍 SAN MARCOS, CALIFORNIA    ⌚ DURATION: 2020 – ONGOING

CRA is providing the City of San Marcos with a variety of traffic engineering services. Task orders under this contract closely resemble those anticipated for the City of Vista, including the preparation and peer review of traffic studies and operational analyses, cycle track feasibility studies and alternatives development, cost estimates, ITS evaluations, safety analysis and countermeasure development, traffic calming evaluation and design, traffic engineering standards and guidelines development and manual updates, grant writing, plan checks, staff report preparation and presentation to the Traffic Commission and City Council.

Specific task orders issued in the past 18 months:

- ▶ San Elijo Cycle Track and Traffic Control Plans
- ▶ Nordahl Road Adaptive Traffic Control System Feasibility Study
- ▶ Nordahl Road & Montiel Road Signage and Signal Operations Evaluation
- ▶ Speed Cushion Policy and Procedure Development
- ▶ Local Roadway Safety Plan (LRSP)
- ▶ Intersection Sight Distance Standards
- ▶ Traffic Commission Guidelines
- ▶ Traffic Signal Design Manual Update
- ▶ Traffic Impact Study Guidelines Peer Review
- ▶ HSIP Cycle 10 Applications
- ▶ Traffic Operations Analysis and Signal Timing Improvements at the Creekside Marketplace Shopping Center
- ▶ Traffic Calming Solutions and Concept Design at Multiple Locations
- ▶ Guard Rail Needs Assessment
- ▶ Conceptual Roundabout Feasibility Study
- ▶ General Traffic Engineering Support such as Speed Studies and Plan Checks

### CLIENT PROJECT MANAGER

CITY OF SAN MARCOS

**Damian Schoenecke**  
 City Contract Manager  
 dschoenecke@san-marcos.net  
 (760) 744-1050 x3246

### CRA KEY STAFF

**Monique Chen, TE**  
 Principal-in-Charge

**Ross Duenas, PE**  
 Contract Manager

**Phuong Nguyen, TE**  
 Task Order Manager

**Tomo Takahashi, PE**  
 Task Order Manager

**Jerard Madrigal, TE**  
 Task Order Manager

**Adam Chase, PE, TE**  
 Task Order Manager

**Andrew Prescott, AICP**  
 Task Order Manager

**Jonathan Sanchez, PE, TE, PTOE**  
 Task Order Manager

### CONTRACT VALUE

\$1M



## ON-CALL PROJECT SUPPORT SERVICES FOR NATIONAL CITY'S CAPITAL IMPROVEMENT PROGRAM

📍 NATIONAL CITY, CALIFORNIA    ⌚ DURATION: 2012 – ONGOING

On our 3rd term, CRA continues to provide as-needed civil and traffic engineering services to the City of National City. Task orders from this contract have focused on Complete Street roadway design, bikeway design, NEPA clearance, park and recreational facilities, operational evaluations, safety studies, grant writing, and Specific Plan development projects. The evaluation of traffic operations has been a critical component of nearly every task order issued, helping to provide City decision makers with information regarding operations with and without proposed projects and project alternatives.

A sample of projects issued by the City of National City:

- ▶ National City Boulevard Protected Bikeway
- ▶ Sweetwater Road Protected Bikeway
- ▶ Bayshore Bikeway – Segment 5
- ▶ West 19th Street Greenway
- ▶ 24th Street Transit Oriented Development Overlay & Traffic Study
- ▶ STEP Grant Program
- ▶ SANDAG SGIP Grant Writing
- ▶ Caltrans ATP and HSIP Grant Writing
- ▶ Systemic Safety Analysis Report Program (SSARP)
- ▶ Division Street Bike Lane Final Design

**NATIONAL CITY BOULEVARD PROTECTED BIKEWAY.** CRA led the design of Class IV separated bikeway connections between National City and Chula Vista by implementing a road diet, re-striping the National City Boulevard overcrossing, and constructing flexible post delineators between the outside lanes and the bike lanes. The project helps residents connect to regional bikeway facilities, such as the existing Sweetwater River and the Bayshore Bikeways. The project constructed a two-stage left turn queue box at the signalized intersection of National City Boulevard and the SR-54 westbound (WB) off-ramp. This provides a dedicated area for northbound bicyclists to cross National City Boulevard from east to west to enter the Class IV facility proposed on W. 33rd Street. The project also installed chevron striping and flex post bollards to prompt drivers, who are exiting the freeway from the SR-54 WB off-ramp, with visual cues to indicate where their vehicles should line up while waiting at the traffic signal, improving overall safety.

### CLIENT PROJECT MANAGER

CITY OF NATIONAL CITY

**Roberto Yano, PE**  
 Director of Public Works and  
 City Engineer  
 ryano@nationalcityca.gov  
 (610) 405-3929

### CRA KEY STAFF

**Monique Chen, TE**  
 Principal-In-Charge and Task  
 Order Manager

**Tomo Takahashi, PE**  
 Task Order Manager

**Scott Cartwright, PE**  
 Task Order Manager

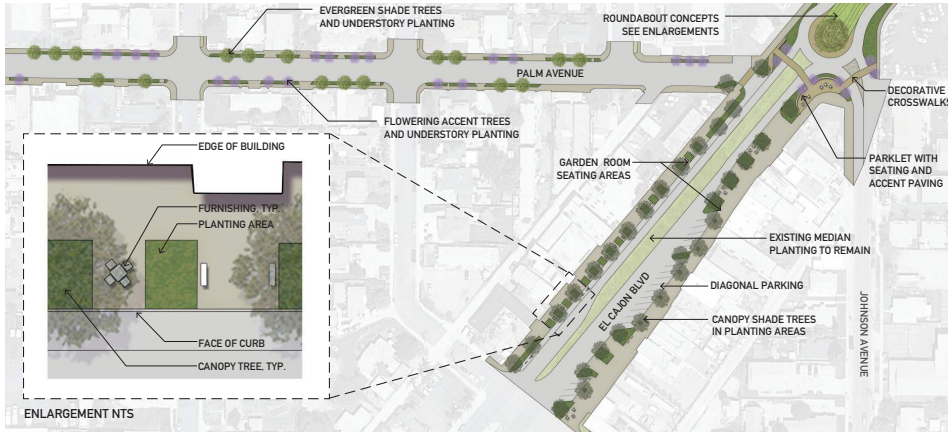
**Adam Chase, PE, TE**  
 Task Order Manager

**Phuong Nguyen, TE**  
 Task Order Manager

**Andrew Prescott, AICP**  
 Task Order Manager

### CONTRACT VALUE

\$5.8M (three distinct contracts)



- CONCEPT SUMMARY:
- EL CAJON BLVD: TREES LARGE CANOPY SHADE TREES AT SIDEWALK, FLOWERING ORNAMENTALS AT ROUNDABOUT
  - PALM AVENUE TREES: 2 SPECIES - SMALL SCALE EVERGREEN TREES AND FLOWERING ACCENT TREES, BOTH APPROPRIATE FOR PLANTING UNDER POWER LINES
  - UNDERSTORY PLANTING: MIX OF FLOWERING NATIVE SHRUBS, GRASSES AND SUCCULENTS
  - SEATING AREAS BETWEEN PLANTING FOR CAFE TABLES OR BENCHES
  - PARKLETS AT ROUNDABOUT WITH SEAT WALLS AND ACCENT PAVING
  - DECORATIVE CROSSWALK PAVING AT ROUNDABOUT
  - STORMWATER TREATMENT INTEGRATED INTO PLANTING AREAS

## CITY OF EL CAJON ON-CALL PROFESSIONAL SERVICES

📍 EL CAJON, CALIFORNIA   ⌚ DURATION: 2019 – ONGOING

CRA is actively performing as-needed engineering services for El Cajon. Task orders from this contract have included grant writing, active transportation plan, safety studies, complete streets roadway and green streets design, roundabout design, and park/recreational facilities. Signing and striping plans and signal modifications played a big role in most projects. Some of the task orders under this contract include the following:

- ▶ Systemic Safety Analysis Report Program (SSARP)
- ▶ Active Transportation Plan
- ▶ SANDAG SGIP Grant Writing
- ▶ Caltrans ATP and HSIP Grant Writing
- ▶ Jamacha Road Corridor Improvements
- ▶ Wells Park Improvements

**EL CAJON TRANSIT CONNECTIONS.** CRA is leading the final design for two concurrent adjacent projects providing much needed multi-modal connections to the El Cajon Transit Center. These projects were developed based on the City’s Transit District Specific Plan (mobility improvement recommendations were developed by CRA) and are both funded by the SANDAG SGIP grant program for design and construction, for which CRA prepared the grant applications on behalf of the City. The first project will improve El Cajon Boulevard between Chamberlain Avenue and Lexington Avenue with minor improvements on Johnson Avenue and Palm Avenue. The focal point of the project is a modern roundabout at the 5-legged intersection of El Cajon Boulevard and Johnson Avenue. This will be the first of three planned roundabouts along the El Cajon Boulevard corridor. Other design elements include a road diet, widened sidewalks with bulb-outs, placemaking to allow opportunities for businesses and community gathering, and landscaping with trees and LID planters. Additionally, the project will serve as a direct connection for the proposed Class I Johnson Avenue Neighborhood Trail. The second project will enhance the Main Street corridor between Marshall Ave and Johnson Ave. A sidewalk-level Class IV bikeway will be installed along the south side of Main Street with a traditional Class IV on the north side. Extensive landscape and BMPs will transform this area visually and promote increased pedestrian usage. The combined effect of these two projects is intended to revitalize the area around the Transit Center and encourage redevelopment.

### CLIENT PROJECT MANAGER

CITY OF EL CAJON

**Mario Sanchez, PE**  
City Traffic Engineer  
msanchez@cityofelcajon.us  
(619) 441-1651

**Senan Kachi, PE**  
Associate Engineer  
skachi@cityofelcajon.us  
(619) 441-6209

### CRA KEY STAFF

**Monique Chen, TE**  
Principal-in-Charge

**Ross Duenas, PE**  
Contract Manager

**Aryo Rad, PE**  
QA/QC Manager

**Scott Cartwright, PE**  
Task Order Manager

**Andrew Prescott, AICP**  
Task Order Manager

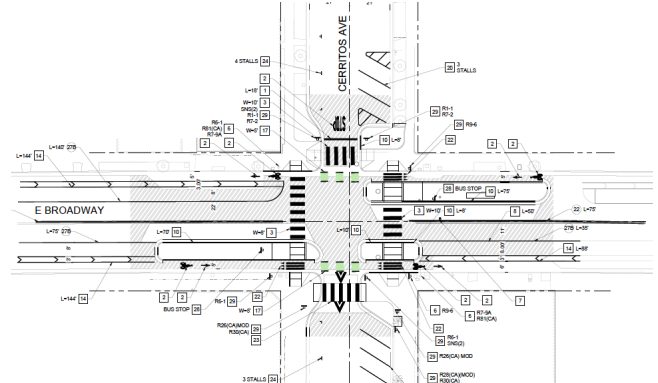
**Adam Chase, PE, TE**  
Principal Engineer

**Tomo Takahashi, PE**  
Senior Traffic Engineer

**Sasha Jovanović, AICP**  
Senior Transportation Planner

### CONTRACT VALUE

\$1.28M



### CITY OF VENTURA ON-CALL

📍 VENTURA, CALIFORNIA

🕒 DURATION: 2021 - ONGOING

CRA is providing civil and traffic engineering on-call services with the City of Ventura. CRA has received three task orders to date.

**TELEGRAPH ROAD ASHWOOD TO HILL ROAD – ATP CORRIDOR DESIGN.** CRA performed preliminary design services to develop active transportation improvements along Telegraph Road (approximately 1.75 miles).

**HARMON BARRANCA BIKE PATH CONNECTION - HAWK / PHB TECHNICAL REVIEW.** CRA provided technical traffic engineering constructability and design review of the City’s new HAWK / PHB located near the Harmon Barranca bike path connection.

**SIGNING AND STRIPING – TELEGRAPH ROAD.** CRA is providing final design incorporating active transportation improvements along Telegraph Road between Ashwood Avenue to Victoria Avenue.

**CLIENT PROJECT MANAGER**

CITY OF VENTURA

**Jeff Hereford**, Principal Transportation Engineer  
 jhereford@cityofventura.ca.gov  
 (805) 654.7744

**CRA KEY STAFF**

**Adam Chase, PE, TE**, Contract Manager  
**Aryo Rad, PE**, QA/QC Manager  
**Tomo Takahashi, PE**, Task Order Manager

**CONTRACT VALUE**

\$ VARIED BY TASK ORDER

### CITY OF LONG BEACH ON-CALL

📍 LONG BEACH, CALIFORNIA

🕒 DURATION: 2021 - ONGOING

CRA is providing civil and traffic engineering on-call services with the City of Long Beach. One of the task orders is to redesign four high injury network intersections to final design.

**FOUR HIGH INJURY NETWORK INTERSECTIONS IMPROVEMENTS.** CRA is supporting the City of Long Beach to meet the goal of eliminating all traffic fatalities by 2026, the Action Plan includes a prioritized list of Keystone Actions to guide the City in meeting its Vision Zero goals: Dedicate Resources to Vision Zero, Lower Vehicle Speeds, Implement Best Practice Street Design, Expand Multimodal Safety Education Campaign, Collect Better Data to Make Better Decisions, Prioritize Road Safety Investments through Equity Lens. CRA is providing engineering design services for pedestrian and bicycle safety improvements at four high injury network intersections. CRA is focusing on providing sound solutions to solve ADA pedestrian circulation, access constraints, bicycle facilities, civil and traffic engineering, and creating comprehensive transit stops.

**CLIENT PROJECT MANAGER**

CITY OF LONG BEACH

**Paul Van Dyk**, Associate Traffic Engineer  
 paul.vandyk@longbeach.gov  
 (562) 570.6675

**CRA KEY STAFF**

**Adam Chase, PE, TE**, Contract Manager  
**Jerard Madrigal, TE**, Senior Traffic Engineer

**CONTRACT VALUE**

\$ VARIED BY TASK ORDER





## ENCINITAS CARDIFF DOWNTOWN LEUCADIA PARKING STUDY

📍 ENCINITAS, CALIFORNIA

🕒 DURATION: 2022 - JUNE 2024

CRA led a parking study for the City of Encinitas, focusing on the Cardiff, Downtown, and Leucadia neighborhoods. The study's primary objective is to evaluate the different neighborhoods' parking needs and develop an ordinance to support the continued operation of the outdoor dining (curb café) program. Furthermore, the study assesses the parking requirements for Accessory Dwelling Unit (ADU) developments within the Coastal Zone and the area influenced by AB 2097. Drawing on parking occupancy and duration data, our destination-based parking occupancy strategies, and best practices, the CRA team developed a roadmap and list of recommended mitigation measures to effectively manage and expand the city's parking supply, particularly in close proximity to popular destinations within the city.

### CLIENT PROJECT MANAGER

CITY OF ENCINITAS

**Evan Jedynak**, Senior Mobility Planner  
jedynak@encinitasca.gov  
(760) 633-2686

### CRA KEY STAFF

**Phuong Nguyen, TE**, Project Manager  
**Sasha Jovanović, PE**, Lead Planner  
**Jonathan Sanchez, PE**, Lead Traffic Engineer  
**Cristian Belmudez**, Traffic Engineer

### CONTRACT VALUE

\$62K



## CARLSBAD PARKING MANAGEMENT PLAN AND RIGHT-OF-WAY FEE UPDATE

📍 CARLSBAD, CALIFORNIA

🕒 DURATION: 2023 - ONGOING

CRA is updating the Village Barrio, and Beach Area Parking Management Plan, Village & Barrio Master Plan, and Existing R-O-W Use Permit Fee Program. This effort consists of conducting the 2023 Village, Barrio, and Beach Area Parking Survey, including a field-verified parking inventory and identification of existing curb cafes. Based on the parking survey, CRA worked closely with the city to develop parking management strategies to improve the parking conditions within the study area. Additionally, the project involved the update of the City's R-O-W Fee Program. As part of this, CRA provided recommendations which included: amendments to the Master Plan, the development of standalone Curb Cafe Design Guidelines, and an update to the ROW Usage & Permitting Fee. Finally, CRA is also assisting the city on updating the parking in-lieu fee program by providing recommendations on how the city can utilize the existing funds legally and efficiently.

### CLIENT PROJECT MANAGER

CITY OF CARLSBAD

**Shelley Glennon**, Associate Planner  
shelley.glennon@carlsbadca.gov  
(442) 339.2605

### CRA KEY STAFF

**Phuong Nguyen, TE**, Project Manager  
**Sasha Jovanović, PE**, Lead Planner  
**Jonathan Sanchez, PE**, Lead Traffic Engineer  
**Cristian Belmudez**, Traffic Engineer

### CONTRACT VALUE

\$149K



# Project Management Plan

## Management Approach

CRA's extensive on-call experience with the City of Hermosa Beach and agencies throughout Southern California enables us to understand and establish management approaches that facilitate the effective delivery of professional services for on-call contracts. Our managerial approach is to anticipate your needs and to quickly and efficiently respond to any and all requests.

### ➤ COMMUNICATION

Effective communication is paramount to a successful project. Above all else, CRA strives to develop and maintain close working partnerships with our clients, always focused on reducing the likelihood of unexpected outcomes that could compromise project success. Our Contract Manager, Monique Chen, is exceptionally responsive and committed to providing excellent client service. She will be the first point of contact between the CRA team and the City of Hermosa Beach. In addition to our staff's dedication to regular communication, you will have the benefit of proven management information systems for work planning, schedule control, and cost control.

### ➤ TASK ORDER MANAGEMENT

The ingredients needed for a successful task order are a well-defined scope of work, a sound technical approach, and a realistic project schedule and budget. For most on-call contracts, multiple task orders may be issued simultaneously. To address this, our team includes a robust group of experienced task leads who can assist our contract manager in fulfilling all the City's requirements. The following critical steps highlight our organizational capacity and approach to ensuring task orders are provided with the right resources from the onset.

STEP

1

#### IDENTIFY THE TASK ORDER MANAGER

When approached regarding a potential task order, our Contract Manager will select the most appropriate CRA Task Order Manager, considering their skillset, experience, and capacity in relation to the nature of the subject task order request.

STEP

2

#### DEFINE THE PROJECT AND ESTABLISH APPROACH

CRA's Contract Manager and selected Task Order Manager will meet with the City to discuss the project goals and expectations. This insight will establish a firm understanding of the spectrum of services and expertise needed to fulfill the assignment. From this understanding, we will craft a technical approach that achieves the defined goals.

STEP

3

#### PREPARE SCOPE & FEE AND IDENTIFY STAFF

Our technical approach will be documented in the scope of work, providing the sequential steps necessary for project delivery. Per deliverable needs, we will map out the team members for the project and establish the fee.

With the approach, scope, staffing, schedule, and budget in place, the CRA team will be prepared to execute any complex task order, whether it is leading a significant long-range planning effort, conducting operational analysis, preparing preliminary designs, or another potentially transformative project for the City.



## BUDGET AND SCHEDULE CONTROLS

CRA has a positive reputation for delivering projects to high acclaim on schedule and within budget. We utilize an interactive web-based management system to assist our project and task managers to successfully maintain control of a project budget by providing real-time status reports on performance, variances, forecasts, and expenditures for all tasks. We apply earned value management as the primary means of monitoring project progress and forecasting performance by integrating the three fundamental components of every task order – scope, schedule, and budget. This allows CRA to evaluate and control project risk by planning and monitoring project performance.

CRA prepares and tracks detailed project schedules with Microsoft Project or can accommodate an alternative format at City staff’s discretion. The schedule will typically consist of a customized critical path method schedule with a detailed list of subtasks, milestones, deliverables, and completion dates. Each subtask listed would align with those identified in the scope of work.

## QUALITY ASSURANCE/QUALITY CONTROL

Our firm was founded on a commitment to fostering a workplace culture dedicated to delivering products that are accurate, well-written, based on sound analysis and industry/city specific design standards, and an assurance that final products have been thoroughly reviewed by our assigned quality assurance/quality control manager before submission.

We have the policies and procedures in place to ensure that our team delivers a quality product every time. We acknowledge that quality and schedule can compete – and, for us, quality always supersedes. As a result, our project schedules have time built in for quality control and document revisions prior to each submittal.

### QA/QC Procedures

#### Kickoff Discussion

Following contract authorization, the project team will begin with a kickoff meeting to establish client expectations, contract requirements, and task scheduling.



#### Work Products Checklist

Checklists for each technical group and project phase are used by QC leads to ensure accuracy and attention to detail. Edits and notes are digitally archived for accessibility.



#### Redlines, Reviews & Notes

QC leads provide feedback by “redlining” products and using review forms. Revisions are rechecked to ensure corrections have been successfully implemented.



#### Quality Close-Out Process

Principal verifies QC process implementation. Check-ins culminate with a final meeting to ensure contractual obligations have been met and expectations have been exceeded.



#### Task & Review Scheduling

Schedules are designed to include internal and external reviews. This allows the project manager and QC reviewers to establish timing and duration for reviews.



#### Cross-Discipline & Compliance Reviews

QC leads perform compliance reviews before submission of deliverables to ensure regulatory compliance and alignment with constructability criteria.



#### Progress Discussions

CRA team meets to review comments and anticipated project challenges to ensure the project can proceed without hindrance.





# Technical Approach

The CRA team understands the principal challenges facing our region and impacting our quality of life: safety, congestion, social inequities, and greenhouse gas emission reduction mandates. We are also aware of how the City of Hermosa Beach and greater region are positioned to take these challenges head-on. Our team is comprised of a diverse spectrum of industry experts who possess the local knowledge and technical expertise to aid the City of Hermosa Beach in providing the services required under this contract while addressing our region’s challenges.

## ▶ TRANSPORTATION PLANNING

The following graphic depicts the proven approach that we have established as the basis for all our planning projects. This planning process is easily tailored to the unique needs and nuances of individual projects, while keeping the core steps intact.

CRA’s planning experience covers the full range of planning service topics with direct project experience performing data collection and analyzing mobility trends; assessing conditions in terms of demand, quality, safety, connectivity, and equity; planning multimodal mobility projects at the site, corridor, community, city and regional levels; evaluating access to transit, schools, parks, and opportunity; drafting of planning narratives and policy language; TDM and shared mobility device service area planning; and parking studies.

Our planning expertise is grounded in feasibility and further strengthened by CRA’s in-house traffic and civil engineering team members. We draw from these varying perspectives to ensure projects address community needs with feasible and implementable recommendations that complement existing transportation networks.



Our planners and engineers are very knowledgeable with the analysis techniques, design standards, and infrastructure treatments used to produce multimodal projects that ensure all users and modes are served safely and efficiently with comfortable facilities. We also embrace and sustain a work environment that is supportive of intellectual curiosity and creativity, which helps facilitate innovation in our tools, methodologies, designs, and plans.



CRA’s innovative approaches have been well received by agencies throughout Southern California. We previously developed a series of performance measures (**Demand, Connectivity/Accessible, Facility Quality, and User Safety**) to guide multimodal analysis and provide for the comparison of with and without project conditions, enabling the benefits of potential improvements to be quantified. These measures are regularly used on mobility planning projects.

### ACCESSIBILITY MEASURES

Measuring access is foundational for understanding whether mobility systems are getting people to where they need to go. To this end, we have developed approaches and unique applications of accessibility measurements – a variety of metrics which measure the quantity and ease of reaching destinations and opportunities from an origin by different travel modes.

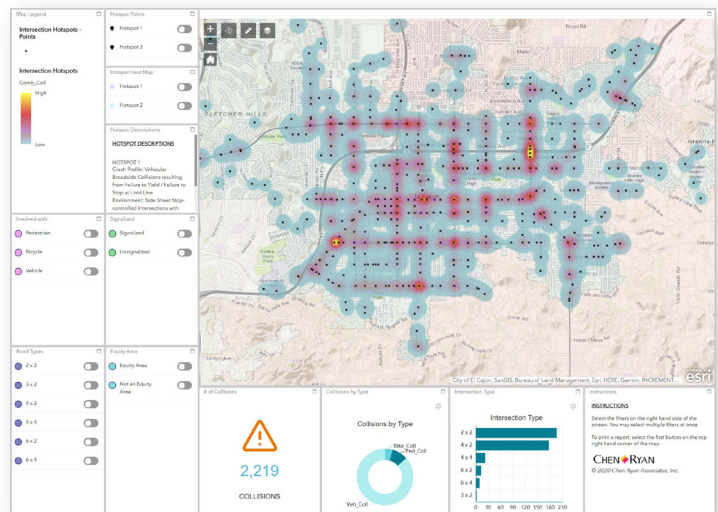
CRA’s **Accessibility Improvement Measure (AIM)** incorporates changes in access to destinations in order to quantify project accessibility benefits. We have applied this approach for the City of Encinitas Modal Alternatives Project and City of Ventura Active Transportation Plan.



Another innovative accessibility measure we developed to support parking studies is the **Destination-Based Parking Occupancy**. This approach provides a standardized measure of access to parking that can be applied in places where the supply of parking is generally perceived to be limited. The approach includes an inventory of parking spaces accessible within a set distance from an individual location(s) and incorporates parking utilization at different times of day. Existing conditions findings can then be compared to proposed project conditions to demonstrate the nuances of parking removal or land use changes.

### ADVANCED DATA DISPLAYS

CRA employs **web-based GIS applications** to present data in dynamic and intuitive dashboards. Our initial dashboards were created to aid in traffic safety assessments and depicting countermeasures to assist clients with systemic safety analysis and recommendation development. This tool integrates collision datasets, roadway characteristics, and countermeasure information (such as crash reduction effectiveness and cost) into an interactive viewer which allows users to filter and query data by collision attributes, exemplifying collision hotspot profiles and prioritize where to implement countermeasures.





We also leverage the dashboard functionality to display the inputs and outcomes of network planning at the community, city, and regional scales. Network planning dashboards typically include layers for existing transportation facilities and services, land use information, collision data, commute patterns, travelshed analysis outputs, and measures of facility quality. We incorporate sociodemographic datasets as additional layers to ensure equitable planning and resource allocation. Combined, these layers help depict areas in need of safety, operational, and/or network connectivity and accessibility improvements. The output provides a strong indicator of where to improve networks. Once developed, network recommendations and associated analysis outputs can be added as additional layers into the dashboard viewer, providing an interactive depiction of pre and post project conditions. These tools streamline analysis efforts, support project team collaboration and client review, and are effective in communicating complex data findings to decision makers.

## ➤ TRAFFIC ENGINEERING

Our team offers exceptional expertise regarding the application of state-of-the-art traffic operational analysis tools, including VISSIM, Synchro/SimTraffic, VISTRO, Traffix, Rodel and SIDRA for roundabouts, and technologies such as the cloud-based Automatic License Plate Recognition (ALPR) and drones. We have helped our clients optimize the timing and phasing of signals, improve operations at intersections along busy corridors, and implement active transportation facilities. We strive to improve traffic progression and minimize travel delays.

We know when and how to apply these advanced analytical tools in a cost-effective manner, focused on efficiently extracting key performance indicators as measures of project benefits. We understand the correct application of these tools, coupled with the necessary expertise related to mobility planning, design, and multimodal integration. For example, we regularly apply traffic operational analysis to our roadway design and traffic calming design projects to include treatments such as bicycle phasing, lead pedestrian intervals, and pedestrian scrambles.

CRA has experience in preparing and reviewing VMT-based traffic studies on both project and program levels. We have an exceptional understanding of the

City's Transportation Study Manual having utilized it to perform studies for projects of varying sizes and scales. We have vast experience with VMT impacts and VMT mitigation (such as Transportation Demand Management programs), and VMT-based transportation/development fee programs. We regularly evaluate VMT reduction measures using the methodologies outlined in the CAPCOA Handbook for Analyzing Greenhouse Gas Emission Reductions, Assessing Climate Vulnerabilities, and Advancing Health and Equity, and SANDAG's Mobility Management Guidebook/VMT Reduction Calculator Tool.

## MICROSIMULATION

Computerized multimodal, micro-simulation is another valuable tool that CRA can offer in support of local agency review and public outreach for project-level efforts. This tool can be used to easily convey complex technical concepts and information more intuitively with superior visual communication. Our micro-simulation capabilities generate realistic visual representations of the interface between automobile travel and other travel modes (e.g. cycling, walking, and transit), and have enabled project teams to determine the most optimal solutions and allow the public to understand the potential project effects and provide meaningful input on project alternatives.

## BIG DATA

The prevalence of Big Data in recent years has been a game changer for transportation planning and analysis. CRA regularly utilizes a variety of Big Data sources to inform various stages of project development, examples include ReplicaHQ, Streetlight, LOCUS, and Strava. This information can help depict demand and travel patterns at many locations, greatly reducing the need for expensive, widespread data collection. We supplement Big Data with traditional counts to help truth the information and provide more accurate estimations of true activity levels.

## ➤ ENGINEERING DESIGN

When providing engineering design services, CRA always considers a balance between any potential roadway users, which may include pedestrian, bicyclists, transit vehicles and users, motorists, and



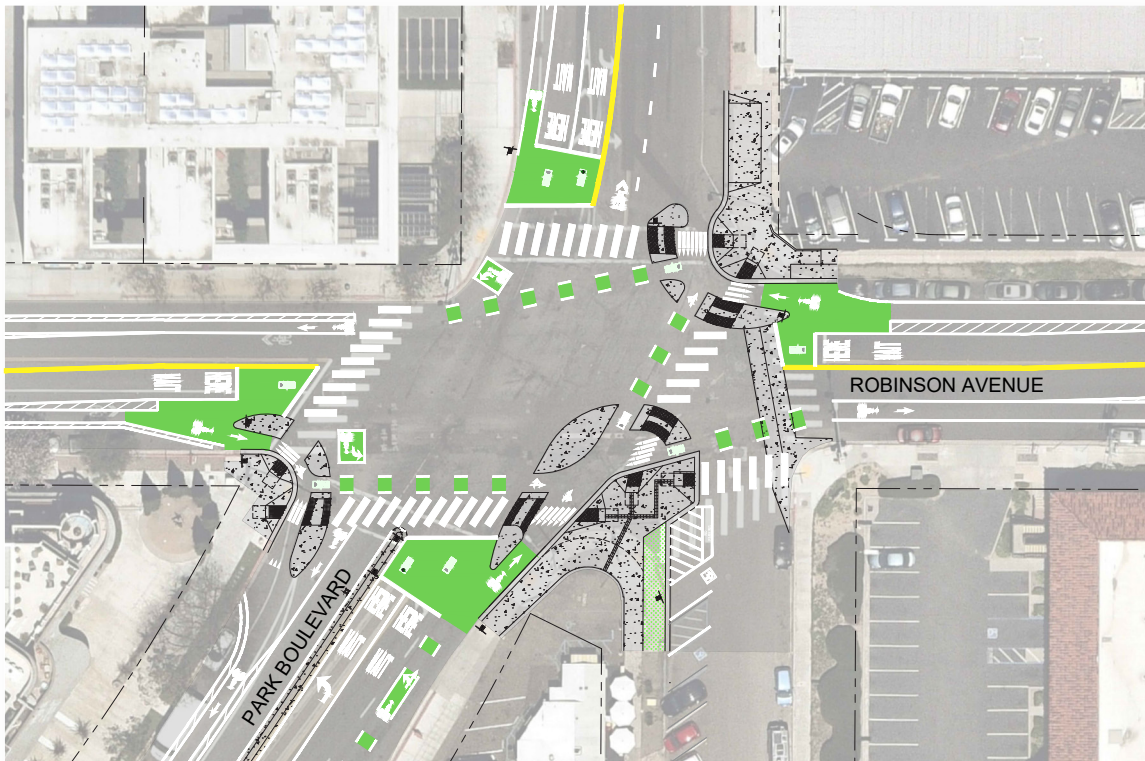
movers of commercial goods. We leverage the latest design criteria and guidelines and draw from fundamental design resources including, but not limited to:

- ▶ Local design standards
- ▶ 2021 "Greenbook" Standards
- ▶ Caltrans Highway Design Manual (HDM)
- ▶ California Manual of Traffic Control Devices (CA-MUTCD)
- ▶ American Public Transportation Association Standards
- ▶ National Association of City Transportation Officials (NACTO) Guides via California Department of Transportation (Caltrans) Deputy Directive 64-R1
- ▶ FHWA Planning and Design Guides
- ▶ Transportation Research Board (TRB) and Federal Highway Administration (FHWA) planning and design guides

CRA believes in working hand-in-hand with City staff and getting stakeholder input in the early stages of a design project. We will develop initial conceptual

layouts with supporting details (e.g., curb-to-curb improvements, cross-sectional transitions, striping, traffic calming devices, landscaping elements, sample intersection treatments, etc.) to bring forth to the community for input. As we obtain both City staff and community feedback, we focus and refine the horizontal and vertical design elements to the desired level of completeness. This approach identifies and resolves geometric project constraints so that we can, not only establish project limits, sight lines, controlled speeds, and other fundamental roadway/ structural design principles, but also balance potential hydrology, hydraulics, and stormwater treatment requirements and resolve utility coordination/ relocation.

CRA is passionate and highly experienced in Complete Streets, active transportation, and traffic calming infrastructure design. We have led numerous bikeway, Green Streets, roundabout projects and are proud ourselves on leading the design of the first protected intersection in Southern California in addition to several subsequent protected intersection projects. We have what it takes to bring your transformative recommendations from "Concept to Concrete".



*Park Boulevard Exhibit Model*



# Required Forms



RFQ 24-002

City of Hermosa Beach



## 6. Required Forms

### 6.1 Certification of Qualifications

RFQ #: 24-002

The undersigned hereby submits its statement of qualifications and agrees to be bound by the terms and conditions of this Request for Qualifications ("RFQ").

1. Proposer declares and warrants that no elected or appointed official, officer or employee of the City has been or shall be compensated, directly or indirectly, in connection with this statement of qualifications or any work connected with this statement of qualifications. Should any agreement be approved in connection with this RFQ, Proposer declares and warrants that no elected or appointed official, officer or employee of the City, during the term of his/her service with the City shall have any direct interest in that agreement, or obtain any present, anticipated or future material benefit arising therefrom.
2. By submitting the response to this request, Proposer agrees, if selected to furnish services to the City in accordance with this RFQ.
3. Proposer has carefully reviewed its statement of qualifications and understands and agrees that the City is not responsible for any errors or omissions on the part of the Proposer and that the Proposer is responsible for them.
4. It is understood and agreed that the City reserves the right to accept or reject any or all statement of qualifications and to waive any informality or irregularity in any statement of qualifications received by the City.
5. The statement of qualifications response includes all of the commentary, figures and data required by the RFQ.
6. The statement of qualifications shall be valid for 90 days from the date of submittal.
7. Proposer acknowledges that the City may issue addendums related to this RFQ and that the proposer has reviewed the following addendums which have been issued:

Addendum: 1

Addendum: \_\_\_\_\_

Addendum: \_\_\_\_\_

Addendum: \_\_\_\_\_

8. Proposer further acknowledges the provisions of any addendums issued have been incorporated into their statement of qualifications.



**RFQ 24-002**

**City of Hermosa Beach**



Signature of Authorized Representative:

  
\_\_\_\_\_

Printed Name and Title:

**Monique Chen, Principal**  
\_\_\_\_\_

**RFQ 24-002****City of Hermosa Beach**6.2 Non-Collusion AffidavitRFQ #: 24-002

The undersigned declares states and certifies that:

1. This statement of qualifications is not made in the interest of or on behalf of any undisclosed person, partnership, company, association, organization or corporation.
2. This statement of qualifications is genuine and not collusive or sham.
3. I have not directly or indirectly induced or solicited any other Proposer to put in a false or sham statement of qualifications and I have not directly or indirectly colluded, conspired, connived, or agreed with any other Proposer or anyone else to put in a sham statement of qualifications or to refrain from submitting to this RFQ.
4. I have not in any manner, directly or indirectly, sought by agreement, communication, or conference with anyone to fix the rate schedule price or to fix any overhead, profit or cost element of the rate schedule price or to secure any advantage against the City of Hermosa Beach or of anyone interested in the proposed contract.
5. All statements contained in the statement of qualifications and related documents are true.
6. I have not directly or indirectly submitted the rate schedule price or any breakdown thereof, or the contents thereof, or divulged information or data relative thereto, or paid, and will not pay, any fee to any person, corporation, partnership, company, association, organization, RFQ depository, or to any member or agent thereof, to effectuate a collusive or sham statement of qualifications.
7. I have not entered into any arrangement or agreement with any City of Hermosa Beach public officer in connection with this statement of qualifications .
8. I understand collusive bidding is a violation of State and Federal law and can result in fines, prison sentences, and civil damage awards.

Signature of Authorized Representative:

---

Printed Name and Title:

Monique Chen, President



**RFQ 24-002**

**City of Hermosa Beach**



6.3 Compliance with Insurance Requirements

**RFQ #:** 24-002

The selected consultant will be expected to comply with the City's insurance requirements contained within this Request for Qualifications ("RFQ").

The undersigned declares states and certifies that:

1. Proposer agrees, acknowledges and is fully aware of the insurance requirements as specified in the RFQ.
2. If selected, proposer agrees to accept all conditions and requirements as contained therein.

Signature of Authorized Representative:

Printed Name and Title:

Monique Chen, Principal

**RFQ 24-002**

**City of Hermosa Beach**



6.4 Acknowledgement of Professional Services Agreement

**RFQ #:** 24-002

The selected consultant will be expected to comply with and sign the City's Professional Services Agreement. Proposers shall identify and/or indicate any exceptions to the Sample Professional Services Agreement included as Attachment 1. The City Attorney or their designee retains the discretion to accept or reject proposed exceptions or modifications to the City's Professional Services Agreement.

- ✓ 1. Proposer agrees, acknowledges and is fully aware of the conditions specified in the City's Sample Professional Services Agreement.
- 2. Proposer agrees to accept all conditions and requirements as contained therein with exceptions noted as follows:

---



---



---



---



---



---



---

Signature of Authorized Representative:




---

Printed Name and Title:

Monique Chen, Principal

# COVID Vaccination Certification

August 30, 2024



**Attention: Suja Lowenthal, City Manager**  
City of Hermosa Beach  
1315 Valley Drive  
Hermosa Beach, CA 90254



**RE:** *Mandatory COVID-19 Vaccination for City of Hermosa Beach Consultants*

Dear Ms. Lowenthal:

Per this letter, CR Associates certifies that all of its officers, agents, employees, subcontractors, representatives and volunteers servicing the City of Hermosa Beach on-site within the City pursuant to the RFQ No. 24-002 On-Call Transportation Planning and Traffic Engineering Services agreement dated August 30, 2024, are or will be fully vaccinated or covered by an approved medical or religious exemption prior to the implementation of the scope of work located within the above referenced agreement.

Respectfully,

**CR ASSOCIATES**

A handwritten signature in blue ink, appearing to read 'Monique Chen'.

**Monique Chen, TE**  
Principal

619.318.4664  
mchen@cramobility.com



**LOS ANGELES**

714 W Olympic Boulevard, Suite 609  
Los Angeles, CA 90015

**SAN DIEGO**

3900 Fifth Avenue, Suite 310  
San Diego, CA 92103