

PARKING REGULATIONS FOR AREAS SURROUNDING CLARK FIELD, SOUTH PARK, VALLEY PARK AND CITY YARD



March 11, 2025

Overview

- Introduction
- Recommendation
- Background
- Discussion



SUMMARY

- As directed by City Council, staff presents this this informational report on the public parking surrounding Clark Field and the City Yard. Due to the interconnectedness and similarities of the parking areas, staff also included parking information for Valley Park and South Park.

RECOMMENDATION

- Staff recommends City Council receive an informational report on the parking regulations for areas surrounding Clark Field, City Yard, South Park, and Valley Park and provide direction, if so desired.



PARKING AREAS

Clark Field

City Yard

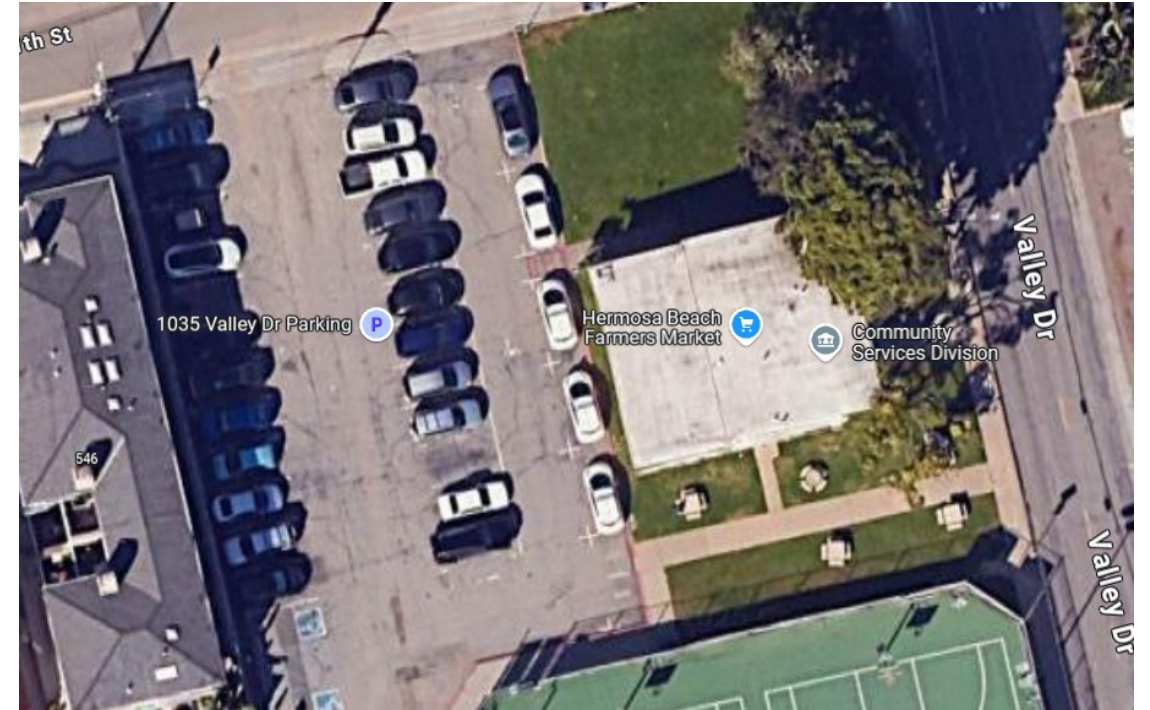
South Park

Valley Park



CLARK FIELD - BASE 3 LOT

Total Spaces	Standard Spaces	ADA Spaces	Time Limit	Restrictions
28	26	2	12-hour	<ul style="list-style-type: none">• No parking Fridays 8:00 AM to 9:00 AM• No parking Fridays 9:00 AM to 5:00 PM (except Farmers Market Vendors)• No parking 2:00 AM to 6:00 AM



CITY OF
HERMOSA
BEACH

CLARK FIELD

900 – 1000 BLOCK OF VALLEY DRIVE

Total Spaces	Standard Spaces	ADA Spaces	Time Limit	Restrictions
48	47	1	12-hour	<ul style="list-style-type: none">• No parking Thursdays 7:00 AM to 8:00 AM• 2-hour parking Fridays 10:00 AM to 4:00 PM (Farmers Market)



CITY OF
**HERMOSA
BEACH**

CLARK FIELD 800 BLOCK – EAST OF VALLEY DRIVE

Total Spaces	Standard Spaces	ADA Spaces	Time Limit	Restrictions
23	21	2	12-hour	<ul style="list-style-type: none">No parking Thursdays 7:00 AM to 8:00 AM



CLARK FIELD 800 BLOCK – WEST OF VALLEY DRIVE

Total Spaces	Standard Spaces	ADA Spaces	Time Limit	Restrictions
15	13	2	12-hour	<ul style="list-style-type: none">No parking Thursdays 7:00 AM to 8:00 AM



CITY OF
HERMOSA
BEACH



CITY YARD

Total Spaces	Standard Spaces	ADA Spaces	Time Limit	Restrictions
5	5	0	12-hour	<ul style="list-style-type: none">No parking Fridays 7:00 AM-8:00 AM



CITY OF
HERMOSA
BEACH

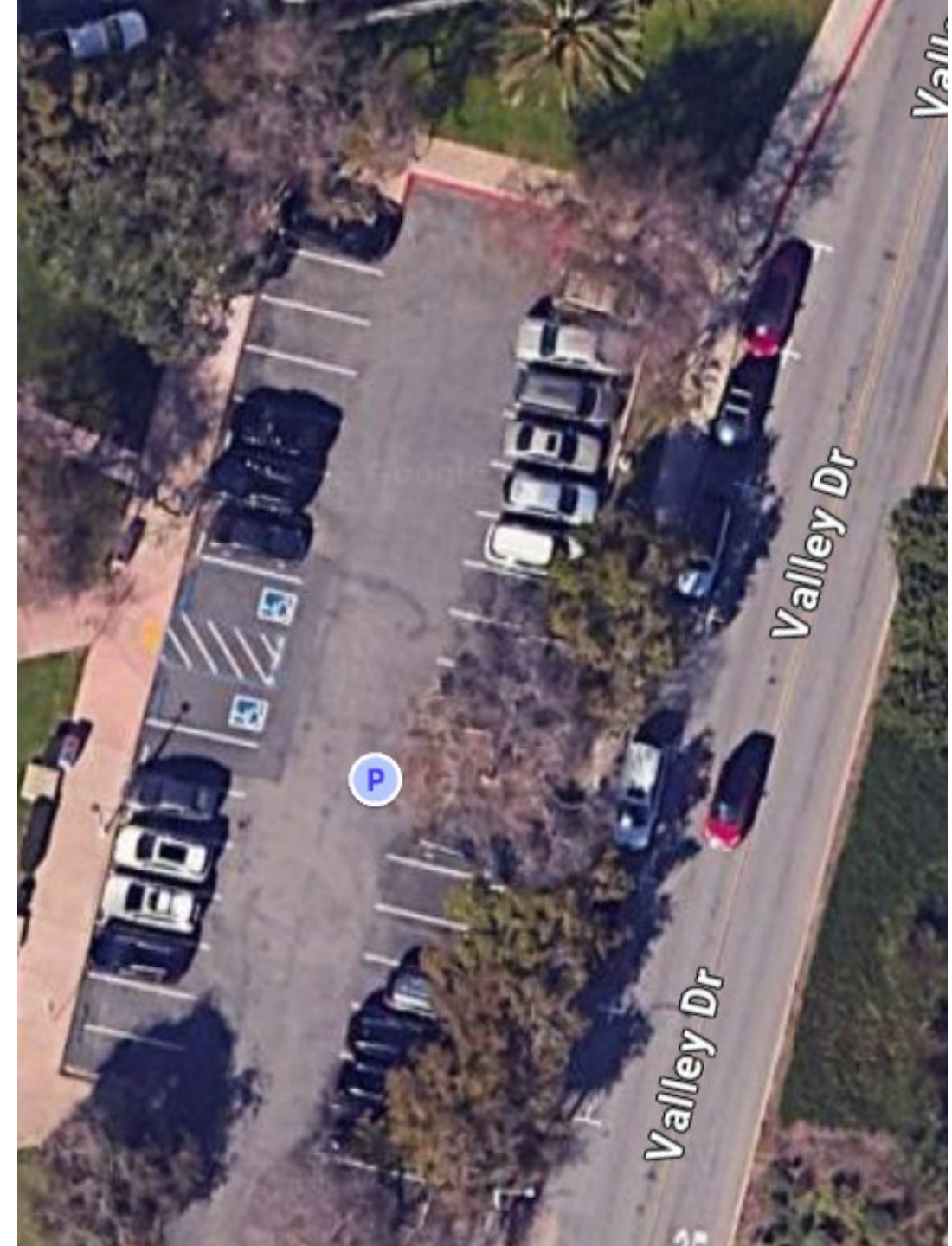


SOUTH PARK WEST OF VALLEY DR

Total Spaces	Standard Spaces	ADA Spaces	Special Spaces	Time Limit	Restrictions
33	29	2	2 (5-minute parking)	6-hour (10:00 AM to 10:00 PM)	<ul style="list-style-type: none">• No parking Thursdays 7:00 AM to 8:00 AM• No parking 10:30 PM to 5:00 AM



CITY OF
HERMOSA
BEACH



SOUTH PARK NORTH LOT

Total Spaces	Standard Spaces	ADA Spaces	Special Spaces	Time Limit	Restrictions
9	8	1	0	6-hour (weekends & holidays)	<ul style="list-style-type: none">• Reserved for City Park After School Program Monday to Friday 1:00 PM to 7:00 PM• No parking 7:00 PM to 8:00 AM

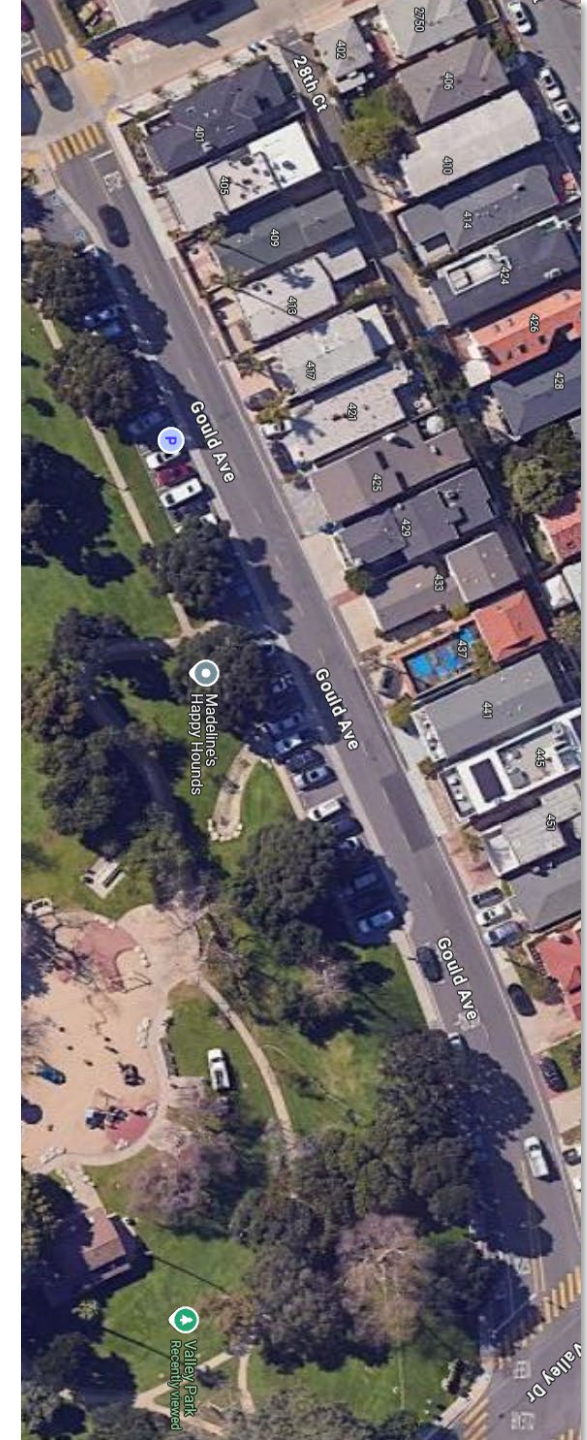


CITY OF
HERMOSA
BEACH



VALLEY PARK

Total Spaces	Standard Spaces	ADA Spaces	Time Limit	Restrictions
39	35	4	No time limit	<ul style="list-style-type: none">• No parking Mondays 8:00 AM to 12:00 PM• No parking 10:30 PM to 5:00 AM



CITY OF
HERMOSA
BEACH

GENERAL PLAN CONSISTENCY

Goal 1. A parking system that meets the parking needs and demand of residents, visitors, and employees in an efficient and cost-effective manner.

Policies:

- **4.4 Preferential parking program.** Periodically study and evaluate the current inventory of public parking supply and update the preferential parking program.
- **4.7 Parking availability.** Optimize parking availability through dynamically adjusted pricing and new technology to manage available spaces for short-term parking use to encourage rates of turnover that are responsive to fluctuating demands.
- **1.3 Priority-based budgeting.** Utilize priority-based budgeting to ensure funding allocations are consistent with the priorities set by the community and City Council.



PARKING REGULATIONS FOR AREAS SURROUNDING CLARK FIELD, SOUTH PARK, VALLEY PARK AND CITY YARD



March 11, 2025