

# Dog Park Proposal for Hermosa Beach

March 2025



All information in this report is non-proprietary.



## Proposal for Establishing a Dog Park in Hermosa Beach

We are a passionate group of dog owners advocating for a dog park in Hermosa Beach.

With over 3,000 dogs in the city—twice the number of local students and six times the youth that play in HB Little League each year—our community clearly values its four-legged companions.<sup>i</sup> Yet, Hermosa Beach lacks a designated space where dogs can play and run off-leash. Right now, residents must drive to neighboring dog parks in Redondo Beach or Manhattan Beach to exercise their dogs or let their dogs off-leash when no one is looking.

As the number of homes with dogs continues to grow, so does the need for pet-friendly facilities. This demand is reflected in the city's recently adopted Parks Master Plan, where a dog park was identified as a top priority by residents. Additionally, a dog park aligns with the city's long-term vision of a healthy and vibrant community outlined in Plan Hermosa.

Public support for a dog park is growing. Our advocacy group, *Bark for a Park*, launched a survey in January 2025 to gauge interest in a dog park within our city. We have collected over 820 signatures and the numbers continue to grow.

This report highlights the benefits of a dedicated dog park, explores potential locations, provides an estimate of costs and potential funding strategies.

### What is a Dog Park?

A dog park is a public or private park for dogs to play off-leash in a controlled environment to exercise and socialize under the supervision of their owners. Throughout this report, we will refer to this request as a dog park.

There is no standard designation between a dog park and a dog run, or even a dog area. While experts say a dog park should ideally be one to five acres, in many urban areas like Chicago, New York, or San Francisco, dog parks are as small as 5,000 square feet.<sup>ii</sup>



## Benefits of a Dog Park

A dog park within walking distance of most homes in the city supports the 2017 Plan Hermosa by providing a unique space that supports a low-carbon, healthy, and active community. <sup>iii</sup> In a city where most residents have no yard or a small yard, a dog park can provide an outdoor recreational space for pets. A dog park is also one of the key priorities identified in the recently adopted Parks Master Plan.

- **Community Benefits:** A dog park will serve as a central hub for social interaction among residents, creating stronger community ties and fostering friendships. Additionally, it encourages outdoor activities, promoting healthier lifestyles for both residents and their pets.
- **Pet-Specific Benefits:** The park will provide a safe, fenced environment where dogs can play off-leash without endangering themselves or others. Socialization opportunities with other dogs and humans will help improve canine behavior and reduce anxiety or aggression.
- **Environmental and Citywide Benefits:** A dog park will reduce pet waste in other public spaces. It will also cut down on the number of citations issued for off-leash violations. Finally, dog parks can increase property values in a city. According to the National Association of Realtors dog parks are a desirable amenity for buyers who have pets, especially in urban areas with small yards.



## Proposed Locations

Based on a review of Hermosa’s parks and continual input from constituents, we have identified nine potential locations for a dog park that are all between 3,400 and 11,600 square feet.

Of these, we believe 3 have the highest potential based on size, parking, impact on nearby neighbors and other factors.

Any locations (except the beach) would have (1) double-door entry systems for secure access, (2) six-foot high fencing, (3) a dog water source, (4) waste receptacles, (5) buffer zones (hedges or trees) to minimize noise and disruptions to neighbors, (6) dog-friendly substrates, (7) eco-friendly landscaping and drainage systems, (8) ADA Accessibility and (9) clear signage that establishes rules, norms for community behavior, release of liability and directions to report issues / suggestions. See *Appendix 1.0 – Dog Park Features & Appendix 2.0 – Possible Dog Park Rules & Signage* for more detail.





### VALLEY PARK SOUTHEAST

City owned portion of Valley Park along the southeast corner by the Kiwanis & Rotary Clubs. 10,000 square feet.



#### HIGHLIGHTS

- ✓ Walkable for many residents
- ✓ Good Parking
- ✓ Relatively under-utilized part of the park
- ? Impacts 5-6 homes

### VALLEY PARK EAST

City owned portion of Valley Park along the east side just south of the restrooms and below Valley drive. 11,600 square feet.



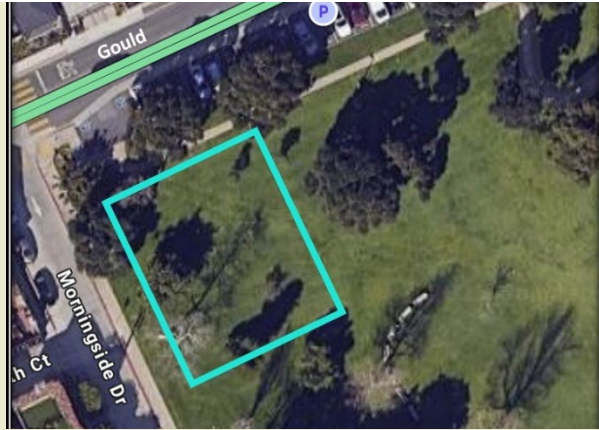
#### HIGHLIGHTS

- ✓ Walkable for many residents
- ✓ Good Parking & Shade
- ✓ Relatively under utilized
- ✓ Impacts no homes
- ✓ Already utilized by many dog owners



**VALLEY PARK WEST**

City owned portion of Valley Park along the Northwest corner of Gould and Morningside.  
11,200 square feet.

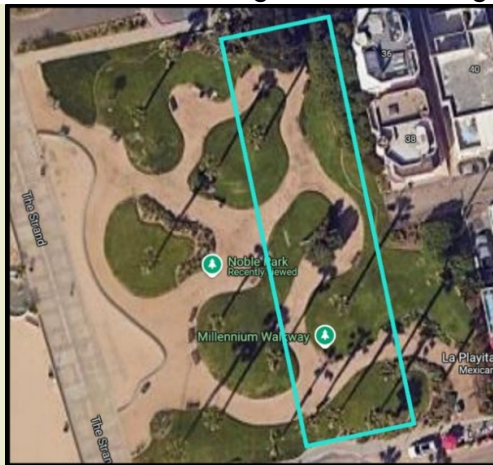


**HIGHLIGHTS**

- ✓ Walkable for many residents
- ✓ Good Parking & Shade
- ✓ Relatively under utilized
- ? Impacts 5 homes
- ? School children walk by

**NOBLE PARK EAST**

City owned portion of Noble Park along the eastern edge. 8,000 square feet.



**HIGHLIGHTS**

- ✓ Walkable for many residents
- ✓ Undulating landscape is fun for dogs
- ✓ Existing benches / shade
- ✓ Relatively under utilized
- ? Parking tight on weekends / summer
- ? Impacts 2 homes & La Playita
- ? Small drainage issue



**COMMUNITY CENTER EAST LAWN**

Portion of east lawn of city owned Community Center. Around 7,000 square feet depending on configuration.



**HIGHLIGHTS**

- ✓ Walkable for many
- ✓ Relatively under utilized
- ✓ Would bring foot traffic to upper pier
- ✓ No neighbors impacted
- ✓ Good parking
- ? Impacts Kiwanis Christmas tree sale

**WATER TOWER – 16<sup>TH</sup> & PROSPECT**

Unused portion of land owned by California Water Service that city officials have received indications could be used as a park. Portion on west side is around 3,400 square feet.



**HIGHLIGHTS**

- ✓ Walkable for East side residents
- ✓ Shaded
- ? Parking tight
- ? Small
- ? Impacts many homes



**EDITH RODAWAY PARK SOUTH**

South portion of City owned Edith Rodaway Park that has fencing on three sides. Would preserve access to grassy area from basketball courts. About 6,500 square feet.

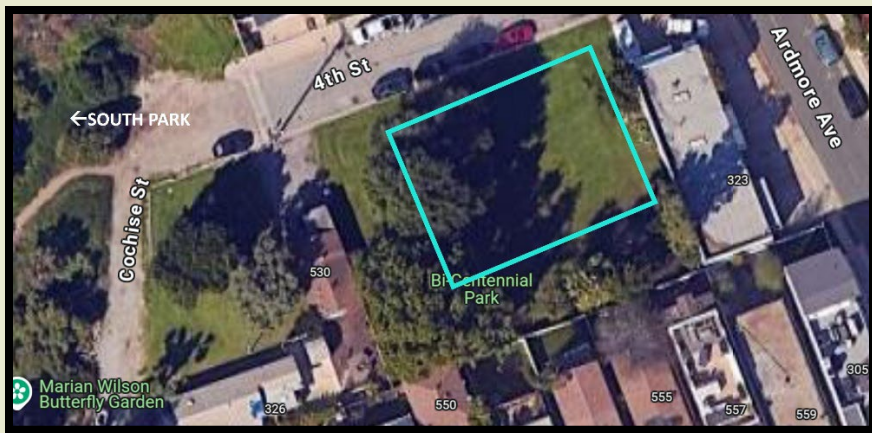


**HIGHLIGHTS**

- ✓ Walkable for East side residents
- ✓ Already has a dog water station
- ? Parking tight
- ? Impacts 8-9 homes

**BI-CENTENNIAL PARK**

Portion of city owned Bi-Centennial Park that would still allow access from neighbors on 3<sup>rd</sup> street to the south. Around 6,400 square feet depending on configuration.



**HIGHLIGHTS**

- ✓ Walkable for residents living south
- ✓ Lots of shade
- ✓ Relatively under utilized
- ✓ No neighbors to the east and west
- ? Parking tight
- ? Impacts 4 homes on the south & 4-5 across the street.



## BEACH DOG PARK

One of the locations that comes up over and over is the idea of putting a dog park somewhere on the beach in Hermosa. Reactions to this are strong – either for or against with those against mentioning the issues of:

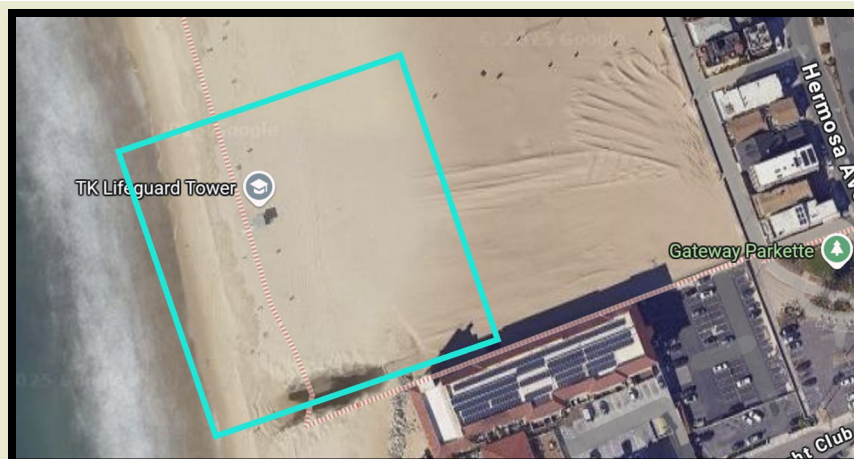
1. Possible **health** issues of dogs on the beach (e.g. Dog waste).
2. **Negative interactions** between dogs and patrons of the beach.

Several locations in Southern California have worked around these issues – Long Beach, Huntington Beach, Del Mar and San Diego. We are actively talking with these cities to understand how they have set up their parks and managed these issues and worked with the Coastal Commission.

In discussions with Long Beach, they utilize beach clean-up vehicles several times a week, have had no health complaints and no increase in water toxicity beyond what all beaches have after heavy rains. They have reported no negative interactions between dogs or between dogs and humans and are so satisfied with their beach that they are working to add a second location. The Coastal Commission has been supportive. The City of Del Mar has similar success (*Details of discussions available upon request.*)

Some ideas that have been suggested for a beach dog park in Hermosa are:

1. Locating a dog beach in the southernmost part of Hermosa with clear markers on where / when dogs are allowed.
2. Only allowing dogs in the **off-season**.
3. **Limiting hours** (e.g. 6-8am Tu-Th).





**Estimated Building Costs**

For a 10,000 square foot Dog Park, construction costs would be \$72,000 to \$235,000 depending on fencing, substrate, and amenities (See Appendix 3.0 – Estimated Costs to Build a Dog Park for more details).

Depending on year 1 funding, the city could begin with a more basic design (e.g. grass substrate) and augment over time (e.g. add anti-microbial artificial turf and additional amenities).

**Funding Sources**

We believe funding sources for building a quality dog park range from initial Year 1 funding of \$160,000-220,000.

YEAR 1 POTENTIAL FUNDING SOURCES		
SOURCE	DETAILS	ESTIMATE
<b>City Sources</b>	<ul style="list-style-type: none"> <li>Unclear what city might have within its budget.</li> </ul>	\$50k
<b>Licenses</b>	<ul style="list-style-type: none"> <li>Redirect revenue from annual dog licenses to creation and maintenance of dog park.</li> <li>Have dog licensing requirements for park entry</li> <li>Increase yearly fees by \$5-10/year.<sup>iv</sup></li> </ul>	~ \$5k/yr if increase license fee & register 250 new dogs
<b>Public Contributions / Partner with Community Organization</b>	<ul style="list-style-type: none"> <li>Many dog parks are funded (at least partially) by local neighborhood groups.</li> <li>A group could be created, under the <i>Friends of the Parks</i> (for tax purposes) to help fundraise.</li> <li>Individuals could sponsor benches, signage, water fountains, leash holders, trees, shade awnings, bulletin boards.</li> <li>Group could raise funds through raffles / events.</li> </ul>	\$90k-\$150k
<b>Founding Corporate Sponsorships</b>	<ul style="list-style-type: none"> <li>Would need same exemption as Little League to city rule of allowing corporate advertising on city property.</li> <li>Create Founding Sponsorships. In exchange for signage opportunities, having events at the park and being promoted through social media, local businesses and pet related businesses (e.g. groomers, vets, pet products, trainers, walkers).<sup>v</sup></li> <li>Possible grants</li> </ul>	\$15k (\$500 – 30 businesses)



**Park Maintenance & Programming**

In a UC Davis Veterinary School study on dog parks in urban areas<sup>vi</sup> the quality of maintenance was one of the biggest factors correlating to ranking of off-leash dog park success.

Elements of maintenance include:

- Emptying waste cans & Re-supplying waste pick up bags
- Opening and closing the park
- Replacing/fixing signs displaying rules
- Filling holes dug by dogs & repairing fencing
- Irrigation and maintenance of vegetation and substrate

Work is needed to estimate these costs (we have reached out to Public Works in Hermosa and are currently reaching out to Manhattan Beach Public Works).

Some additional logistics ideas have been to close the park:

- ½ day a week for deep cleaning / minor maintenance.
- 1-2 weeks each year for larger maintenance / enhancements.

In addition, programming could be done (either by the city or in tandem with a volunteer “Friends of the Dog Park” group) to educate local dog owners (e.g. vaccination clinics, dog training sessions, fun events). These could also have fundraising potential.

**Funding** for yearly maintenance of the park and ongoing enhancements could include:

ONGOING FUNDING SOURCES FOR MAINTENANCE & ENHANCEMENTS		
SOURCE	DETAILS	ESTIMATE
<b>HB Budget</b>		\$5k
<b>Licenses</b>	<ul style="list-style-type: none"> <li>• Redirect revenue from annual dog licenses to creation and maintenance of dog park.</li> <li>• Have dog licensing requirements for park entry</li> <li>• Increase yearly fees by \$5-10/year to generate revenue (same as year 1 funding)</li> </ul>	~ \$5k/yr if increase license fee & register 250 new dogs
<b>Yearly raffle</b>	<ul style="list-style-type: none"> <li>• Raffle for maintenance / enhancements funds.</li> </ul>	\$10-\$20k/yr
<b>Yearly Corporate Sponsorships</b>	<ul style="list-style-type: none"> <li>• Yearly corporate sponsors donate in exchange for promotion of their businesses.</li> <li>• Dedicated social media for the park could promote deals from sponsors.</li> <li>• Periodic events in the parks (e.g. mobile groomer, teeth cleaner, vaccination clinic, trainers).</li> <li>• Host dog charities for owners to donate used pet items.</li> </ul>	\$5k (\$250 – 20 businesses)
<b>TOTAL</b>		<b>\$25-\$35 k</b>



**Addressing Concerns**

Several concerns have been brought up with regards to a dog park. Below are some ideas for mitigating these worries.

Area	Strategies
<b>NOISE</b>	<p>Create barriers between the park and neighbors that include special fence coverings such as Acoustifence<sup>vii</sup> which reduces sound by 85% and landscaping to dull sound and create a nice aesthetic.</p> <p>Post signs asking owners to remove their dog from the park if they are excessively barking.</p>
<b>SAFETY</b>	<p>Study on dog parks by UC Davis Veterinary Behavioral Medicine Center for Animals<sup>viii</sup> found that injuries to people and dogs in legal off-leash areas are rare. Signage indicating that dogs that are aggressive to other dogs, young dogs (less than 4 months) and suggestions for fearful dogs have been proven to be effective in deterring interactions.</p> <p>Additionally, all park users should have their dogs under voice control and children should be closely supervised by a responsible adult.</p> <p>As with any public space that dogs frequent (e.g. the Strand) the best way to keep a dog safe is to ensure they are up to date with all vaccinations.</p> <p>Programming (supported by a community group) that educates patrons on dog behavior and offering periodic vaccination events can also benefit the community.</p>
<b>SANITATION</b>	<p>Fecal counts have been identified as the third most profiled concern of community officials and park managers regarding dog parks according to the UC Davis report. A correlation was found between the number of signs in the park reminding users to pickup after their dogs and a lower fecal count. Signs seem to be more important than the number of trash cans provided the cans are not overflowing (See Appendix 2.0 - Possible Dog Park Rules &amp; Signage for signage examples).</p> <p>Peer pressure and “self-policing” have been identified by park managers as factors that improve compliance.</p>



## Bark for a Park Advocacy Group

In submitting this report, we acknowledge past efforts in Hermosa to create a dog park.

This effort, *Bark for a Park*, was born out of lot in Hermosa that dog owners were allowed free access during COVID for off-leash recreation. The joy of the dogs and the community created there evolved into a once a week off-leash dog park on a walk street in 2022. Yet the desire by participants was and is to not just have a place to meet once a week for an hour but to have a quality off-leash area in Hermosa where **all** dogs and owners in Hermosa can meet and strengthen the community. This is the genesis of this *Bark for a Park* effort.

Since the *Bark for a Park* launch (see [www.hermosabeachdogpark.com](http://www.hermosabeachdogpark.com)) we have found and connected to other lovely groups and individuals in Hermosa who also want a special community place where dogs can connect.

One of the group, Carla Buck, has:

- Attended Hermosa Beach Parks Master Plan study sessions.
- Spoken at City Council and Parks and Recreation Commission meetings to advocate for a dog park.
- Conducted ongoing research on building and maintaining dog parks including:
  - Reviewing dog park proposals & fundraising mechanisms, studies on noise, safety, liability, safety and signage.
  - Attending seminars and reading manuals on building dog parks.
  - Visiting dog parks across Southern California
  - Soliciting quotes from fencing and artificial turf companies to provide realistic estimates for our proposal.

As of 3/10/25, we have over 820 signatures in support of a dog park, many of which are offering to actively and passionately work to make a quality off-leash dog park in Hermosa a reality.

## Conclusion

The establishment of a dog park in Hermosa Beach will benefit residents, enhance the city's amenities, and contribute to the overall well-being of dogs and their owners. This project aligns with Plan Hermosa, the Parks Master Plan, and the city's commitment to creating recreational spaces all to enjoy. As dog owners, we are committed to fostering a vibrant, inclusive, and pet friendly community.

We urge the council to consider our proposal and look forward to discussing it further. We sincerely hope that the council will move quickly to make this a reality.



Respectfully submitted.

## Sources

<sup>i</sup> Estimated 40% of U.S. households have at least 1 dog according to a 2024 study by The Zebra (Zebra, Pet Ownership Statistics, 2024). Hermosa Beach has 8,922 households according to U.S. Census Bureau (Bureau, 2023) so at least 3,000 dogs assuming 40% have 1 dog. There were 1,325 students K-8 in Hermosa Schools for the 2023-24 year (Statistics, 2023). In 2024, there were an estimated 18,300 residents of Hermosa Beach. (Review, n.d.)

<sup>ii</sup> There is no standard designation between a dog park or a dog run or even a dog area and even though “experts” say a dog park ideally is 1-5 acres, in many urban areas such as Chicago (Chicago, 2020), NYC (refers to most parks even large ones as dog runs) or San Francisco (Parks S. F., n.d.), dog parks can be as small as 5000 square feet.

<sup>iii</sup> PLAN Hermosa Integrated General Plan and Coastal Land Use Plan. (2017). chrome-extension://efaidnbmnnnibpcajpcgiclfindmkaj/https://www.hermosabeach.gov/home/showpublisheddocument/9872/637001018228830000

<sup>iv</sup> As of 2024 yearly license for a pet in Hermosa costs \$29 for a neutered dog and \$109 for a non-neutered one. Many owners either do not know they need one or don't get one because of lack of perceived value to them. Making a license a requirement to enter the dog park and having periodic sign-up events could increase the percentage of owners who get a license – creating additional revenue. Cost of license could increase by \$5-10/year and be directly allocated to cost of maintaining and enhancing the park.

<sup>v</sup> Sponsorship Examples – Madison Parks Foundation (Foundation, n.d.), City of LA Parks & Recreation (Parks C. o., n.d.), Redondo Beach Dog Park (Park, n.d.), Lansing Michigan (District, n.d.), City of Plainwell Michigan (City of Plainwell, n.d.)

<sup>vi</sup> UC Davis dog park study - chrome-extension://efaidnbmnnnibpcajpcgiclfindmkaj/https://thestantonfoundation.org/assets/canine/Dog-Park-Resources/UC-Davis-Study-Dog-Park-Maintenance.pdf

<sup>vii</sup> Acoustifence is an example of a product used to reduce noise generated by dog parks.  
<https://acoustiblok.com/portfolio-items/animal-noise/>

<sup>viii</sup> UC Davis dog park study - chrome-extension://efaidnbmnnnibpcajpcgiclfindmkaj/https://thestantonfoundation.org/assets/canine/Dog-Park-Resources/UC-Davis-Study-Dog-Park-Maintenance.pdf



# Dog Park Proposal for Hermosa Beach

APPENDIX – MARCH 2025





## Appendix 1.0 – Dog Park Features

<p><b>Size</b> – Although “experts” say the best dog areas are 1+ acres, in urban environments (e.g. Chicago, NYC, SF) many dog parks are much smaller and still provide most of same advantages to their bigger cousins.</p>		<p><b>Barrier</b> – 6’ high fence so dogs can’t wiggle through or jump over (chain link if close to the water; steel if farther away from the beach).</p>	
<p><b>Double-gate system</b> to prevent dogs from escaping when other dogs and people enter or leave the space.</p>		<p>At least one dog <b>water source</b>.</p>	
<p><b>Waste removal</b> supplies and equipment, such as baggies, shovels or scoopers and covered trash containers.</p> <p>There is no hard &amp; fast rule for number of waste receptacles in a dog park, but there should be at least one at the entrance and 1-2 more depending on the size of the park.</p> <p>The key is creating a dog park culture where all respect the space and clean up after their dog (by the way – most people obey rules when someone is watching.)</p>		<p><b>Good signage</b> that outlines rules &amp; <b>liabilities</b> (see <i>Appendix 3.0</i> for list of potential rules). In California, cities are not liable for incidents unless there was an out of the ordinary hazard in the park (something that applies to all of our parks.) Signs should indicate “use at your own risk” and refer to 3342 California Civil Code that states the owner of any dog is liable for damages suffered by any person who is bitten by the dog while in a public place.</p>	

# 2025 Hermosa Beach Dog Park Proposal – Appendix



## Safe Substrate (i.e.. Surface)

Consider surfaces that are easy to maintain and not harmful to dogs. Gold standard is anti-microbial artificial turf.



<p style="text-align: center;"><b>Turf</b></p> <ul style="list-style-type: none"> <li>• Dogs love it</li> <li>• Must be watered, mowed, weeded and periodically replaced</li> <li>• Worn patches should be repaired timely</li> <li>• Feces may be hard to detect</li> </ul>	<p style="text-align: center;"><b>Anti-microbial artificial turf</b></p> <ul style="list-style-type: none"> <li>• Dogs love it</li> <li>• Most expensive option</li> <li>• Must periodically be washed and deep-cleaned (2-4/month)</li> <li>• Good for ~5-8 years depending on wear</li> </ul>	<p style="text-align: center;"><b>Bark / Wood Chips</b></p> <ul style="list-style-type: none"> <li>• Relatively cheap option</li> <li>• Easily maintained</li> <li>• Not aesthetically pleasing to some</li> <li>• Feces can be stuck on chips</li> <li>• Non ADA- compliant</li> <li>• Periodic replenishment</li> <li>• Should pick product so that dogs do not get splinters</li> </ul>
<p style="text-align: center;"><b>Decomposed Granite (DG)</b></p> <ul style="list-style-type: none"> <li>• Relatively easy to maintain</li> <li>• Can be dirty and hot for dogs</li> <li>• Feces easily detected and removed</li> <li>• Must be repaired when dogs dig holes</li> <li>• Good drainage if deep enough and graded well</li> </ul>	<p style="text-align: center;"><b>Sand</b></p> <ul style="list-style-type: none"> <li>• No worry about holes</li> <li>• Adequate drainage</li> <li>• Feces easily detected and removed.</li> <li>• Could be too hot for dogs during warm weather</li> <li>• Maintaining and keeping clean may require special equipment</li> </ul>	<p style="text-align: center;"><b>Dirt</b></p> <ul style="list-style-type: none"> <li>• Higher complaints of safety</li> <li>• Participants complain dogs must be washed each visit.</li> <li>• Muddy after rain</li> <li>• Little maintenance</li> </ul>
<p>Good <b>drainage</b> to help prevent muddy conditions.</p>	<p style="text-align: center;"><b>Wheelchair and ADA accessible</b></p>	
<p><b>Convenient hours that respect neighbors -</b> Typically dawn to dusk – e.g. 6-7am-7pm. Could have 1 morning/day a week closed for maintenance (e.g. Redondo Beach Dog Park does this) and 1 week a year for enhancements / major maintenance.</p>	<p><b>Hermosa Specific</b> – Walkable and if people drive it is easy to park. Minimal impact to neighbors OR park impacts minimal neighbors.</p>	

# 2025 Hermosa Beach Dog Park Proposal – Appendix



	<p>Sturdy, pet-friendly seating .</p>	<p><b>Shaded areas</b>, such as from trees, umbrellas or open gazebos.</p>
<p><b>Protection of Plants</b> – To preserve the health of trees and shrubbery, some parks put barriers around them.</p>		<p><b>Small/Large dog areas</b> – This is preferred but not required depending on the space. Some cites only have one area but having a small dog area gives smaller dogs a space to not be intimidated.</p>
<p><b>Announcement Board.</b> Could use the park to educate and inform residents about vaccinations and upcoming clinics, dog licenses, upcoming events &amp; services.</p>		<p><b>Noise reduction strategies</b> – Eco-friendly shrubbery and/or Sound reduction fence covering can reduce sound by as much as 85%</p>



## Appendix 2.0 – Possible Dog Park Rules & Signage

Below is a set of rules compiled from 30–40 different parks. There are too many below to list but should give a sense of the types of rules laid out by different communities.

<b>WELCOME TO YOUR DOG PARK!</b>	
<p>This area is dedicated to fun and exercise activities with your dog. Dogs may run off-leash, under voice control, within the confines of the fenced area.</p> <p>Be responsible &amp; Enjoy the Dog Park!</p>	
<b>HOURS OF OPERATION</b>	<ul style="list-style-type: none"> <li>▪ 7am to 8pm – DAILY (change during summer?)</li> <li>• Some parks closed a morning or day a week for maintenance and 1 week a year for larger enhancements.</li> </ul>
<b>RESPONSIBILITY FOR CLEAN-UP</b>	<ul style="list-style-type: none"> <li>• Dog waste must be cleaned up by their owners IMMEDIATELY [See clever signs]</li> </ul>
<b>OTHER BEHAVIOR</b>	<ul style="list-style-type: none"> <li>• Keep your dog on a leash until you enter the park area.</li> <li>• Handlers must be within the dog park and supervising their dog with leash readily available.</li> <li>• 3 dog maximum per visitor [NOTE: UC Davis study indicated that too many dogs per person resulted in more un-picked up feces].</li> <li>• Please keep your dog from jumping on other dogs or people</li> <li>• Aggressive dogs must be removed immediately (Do not allow your dogs to be aggressive towards people or other dogs)</li> <li>• Dogs should be under voice control</li> <li>• Do not allow dogs to dig holes. If they do, fill holes immediately</li> <li>• Keep your dog away from gates when other dogs are entering</li> <li>• The dog park gate must be closed at all times.</li> </ul>
<b>LIABILITY</b>	<p><b>NOTE:</b> Cities limit liability for dog parks by posting signs that communicate to owners that they use the park at their own risk. California Civil Code 3342 says that the owner of any dog is liable for the damages suffered by any person who is bitten by the dog while in a public place. The only liability for a city is if there is out-of-the-ordinary hazard left unrepaired in the park which applies not just to a dog park but to any park within the city.</p> <ul style="list-style-type: none"> <li>• Use park at your own risk. (Park is not responsible for injury or damage; enjoy at your own risk)</li> </ul>

# 2025 Hermosa Beach Dog Park Proposal – Appendix



	<ul style="list-style-type: none"> <li>• Owners are legally responsible for behavior of their dog(s) at all times</li> </ul>
<b>SAFETY</b>	<ul style="list-style-type: none"> <li>• All dogs must have current vaccinations / wearing a collar with ID tags</li> <li>• No Dogs under 4 months.</li> <li>• All dogs above a certain age (e.g. 2 years) must be spayed / neutered.</li> </ul>
<b>RESTRICTION OF USE</b>	<ul style="list-style-type: none"> <li>• Some parks are only open to residents of that city OR they must buy a usage pass.</li> </ul>
<b>HANDLER / VISITOR AGE</b>	<ul style="list-style-type: none"> <li>• Dog handlers must be at least 16 years of age.</li> <li>• Children under 13 must be accompanied by an adult and supervised at all times.</li> </ul>
<b>PROHIBITED</b>	<ul style="list-style-type: none"> <li>• Human &amp; dog food/treats</li> <li>• Glass containers</li> <li>• Dogs in heat</li> <li>• Sick dogs</li> <li>• Aggressive dogs</li> <li>• Puppies (under 4 months)</li> <li>• Strollers, bikes, skateboards, and similar items</li> <li>• Pets other than dogs</li> </ul>
<b>WHO TO CALL</b>	<ul style="list-style-type: none"> <li>• In an emergency, Please call 911.</li> <li>• Report incidents, problems or violations to xx at xxx-xxx-xxxx</li> <li>• Violation of rules may be cited by xxx of the HB Municipal Code</li> <li>• Suggestions?</li> <li>• Refer to Social Media for the Park.</li> </ul>
<p>Failure to comply with Dog Park Rules may result in you and your dog(s) being asked to leave the facility.</p>	



Some parks use humor / graphics to inform and create norms of behavior.

IDEA: We could engage local artists to create signs / images for us.



OR – Set the tone of the park

- “Be the person your dog thinks you are”
- “Friendly dogs only” / “Well behaved dogs are welcome”

OR Educate

### DOG PARK ETIQUETTE

- Pick up after your dog**  
Dog poo is harmful to the environment. It pollutes waterways and can spread parasites. Please use the bags and bins provided to dispose of your dog's waste.
- Check before letting dogs greet**  
Before letting your dog into the park, check with other park users. Some dogs need slow introductions, are in training, or have an injury. If you can't let your dog in with them, take a walk on leash while you wait.
- Manage your dog's behaviour**  
Learn dog body language so you can read your dog's interactions with others. Avoid letting your dog behave rudely to other dogs. If your dog is frightened of something, move them away. Don't let them run along the fence line - this often leads to scuffles and injuries.
- Only use treats and toys around known dogs**  
Treats and toys can cause scuffles and fights at the dog park, even between dogs that live together. This can happen because excitement levels are high! Use caution to avoid disagreements.
- Close the gates behind you**  
As a courtesy to other park users, please close the gates behind you. The paddocks have multiple entry points, so an open gate could mean a looong walk to close it!

### IS YOUR DOG SCARED?

IAABC

### Good dogs:



### Good owners:



# 2025 Hermosa Beach Dog Park Proposal – Appendix



## Appendix 3.0 – Estimated Costs to Build a Dog Park

Based on a 10,000 square foot dog park (the largest of identified locations) we estimate a dog park could be built between ~\$72,000 to \$235,000.

	Item cost	Basic		Mid		High	
<b>TOTAL COST</b>		\$ 72,002		\$ 131,222		\$ 233,102	
<b>Approximate SF - 10,000</b>		<b>10,000</b>		<b>10,000</b>		<b>10,000</b>	
6 ft Fence / Double Gates [Material & Install] (1)		\$ 30,200	Chain Link	\$ 33,500	Steel	\$ 33,500	Steel
Surface [Material & Install] (2)		\$ 10,000	No change	\$ 50,000	Engineered Wood Chips	\$ 125,000	Antimicrobial Artificial Turf
<u>Accessories (1)</u>							
Benches	\$ 350	\$ 350	1	\$ 700	2	\$ 1,050	3
Water Fountain		\$ 3,500	1	\$ 3,500	1	\$ 7,500	
Waste bin(s)	\$ 600	\$ 600	1	\$ 1,200	2	\$ 1,800	3
Waste bag dispenser(s)	\$ 550	\$ 1,100	2	\$ 1,100	2	\$ 1,650	3
Signage	\$ 1,000	\$ 1,000	1	\$ 2,000	2	\$ 2,000	2
Bulletin Board	\$ 1,000	\$ -	-	\$ -	-	\$ 1,000	1
Leash hooks	\$ 500	\$ -	-	\$ 500	1	\$ 500	1
Agility equipment (3)		\$ -		\$ 3,000		\$ 6,000	
Initial Waste Bags	\$ 84	\$ 252	3	\$ 252	3	\$ 252	3
Plaques	\$ 200	\$ 1,000	5	\$ 1,600	8	\$ 2,000	10
<u>Engineering / Install</u>							
- Plan Design (3)		\$ 6,000		\$ 6,000		\$ 6,000	
- Installation (plumbing, equipment) (3)		\$ 6,000		\$ 6,000		\$ 6,000	
Contingency (20%)		\$ 12,000		\$ 21,870		\$ 38,850	

- (1) Detail on quotes available upon request
- (2) Design of park surface may include multiple surfaces (e.g. packed DG on some portion, grass or turf on another)
- (3) Estimate. Not backed up by a quote

- Based on funding, some of these items (e.g. artificial turf, agility equipment) could be phased in overtime.
- Does not include maintenance costs.