

# Dog Park Research

---



## 1. EXAMPLES OF OTHER DOG PARKS BEYOND SOUTH BAY

*(Not meant to compare parks pros and cons as much as provide input and ideas towards design of a Hermosa park)*

- a) Olive Hills (Anaheim)
- b) West Hollywood Dog Park
- c) Glen Alla Park (MDR)
- d) Bluff Creek (Playa Vista)

## 2. CITY MAINTENANCE FUNDING IDEA

# A) Anaheim – Olive Hills Dog Park



## BACKGROUND

- 1.2 acres (52,000sf) within bigger park
- Opened August 2016. Separated small and large dog use areas with agility equipment, benches, and native plant materials
- No neighbors
- Dawn to Dusk
- 6 ft high black metal fencing



# Anaheim – Olive Hills Dog Park



## WHY INTERESTING?

- Mixed surfaces –
  - (1) Decomposed Granite (DG) in heavy traffic areas (mulch might be better? – this was during rain storms)
  - (2) Artificial turf covers small “mounds” or hills in the park



# Anaheim – Olive Hills Dog Park



## WHY INTERESTING?

- Baskets along fences hold tennis balls (from nearby tennis courts)



- “Rolling fence” might be a good feature between small / big dog areas

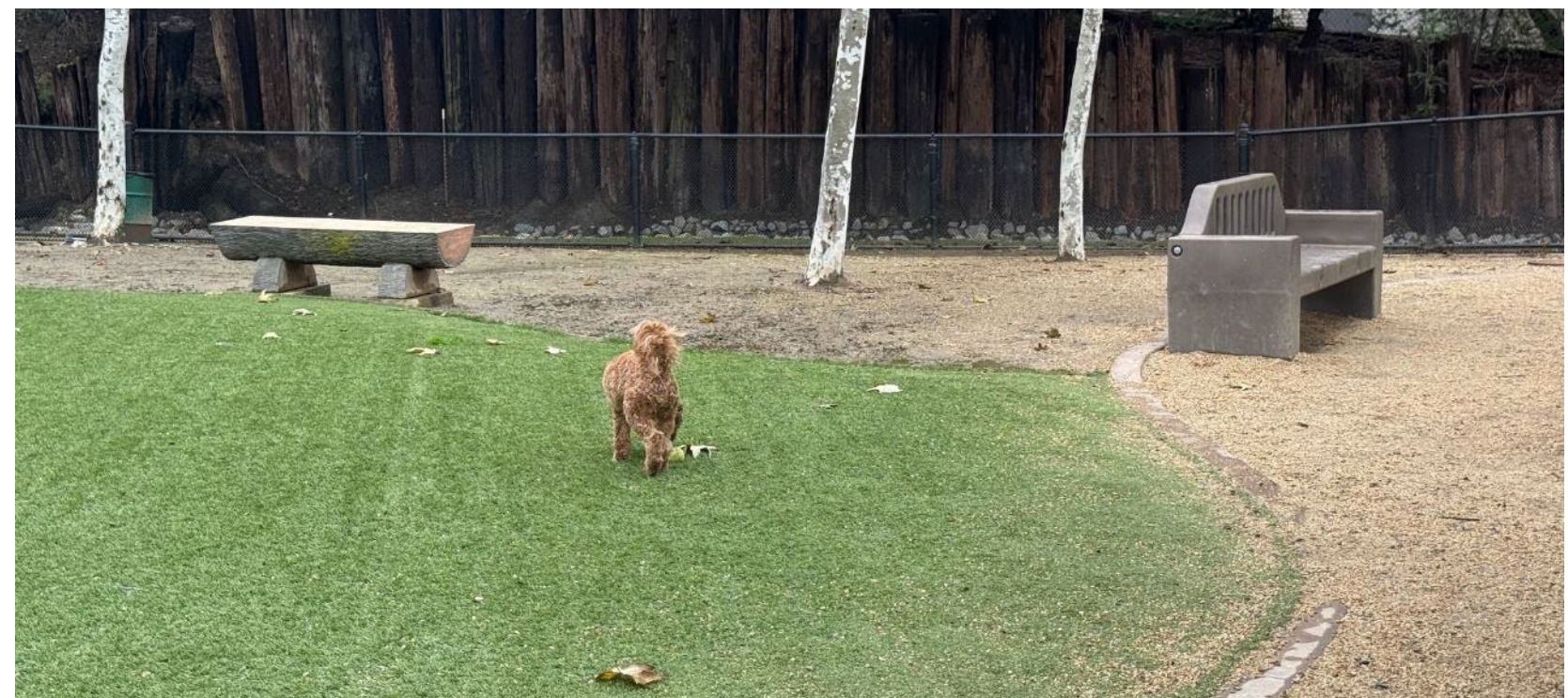


# Anaheim – Olive Hills Dog Park



## WHY INTERESTING?

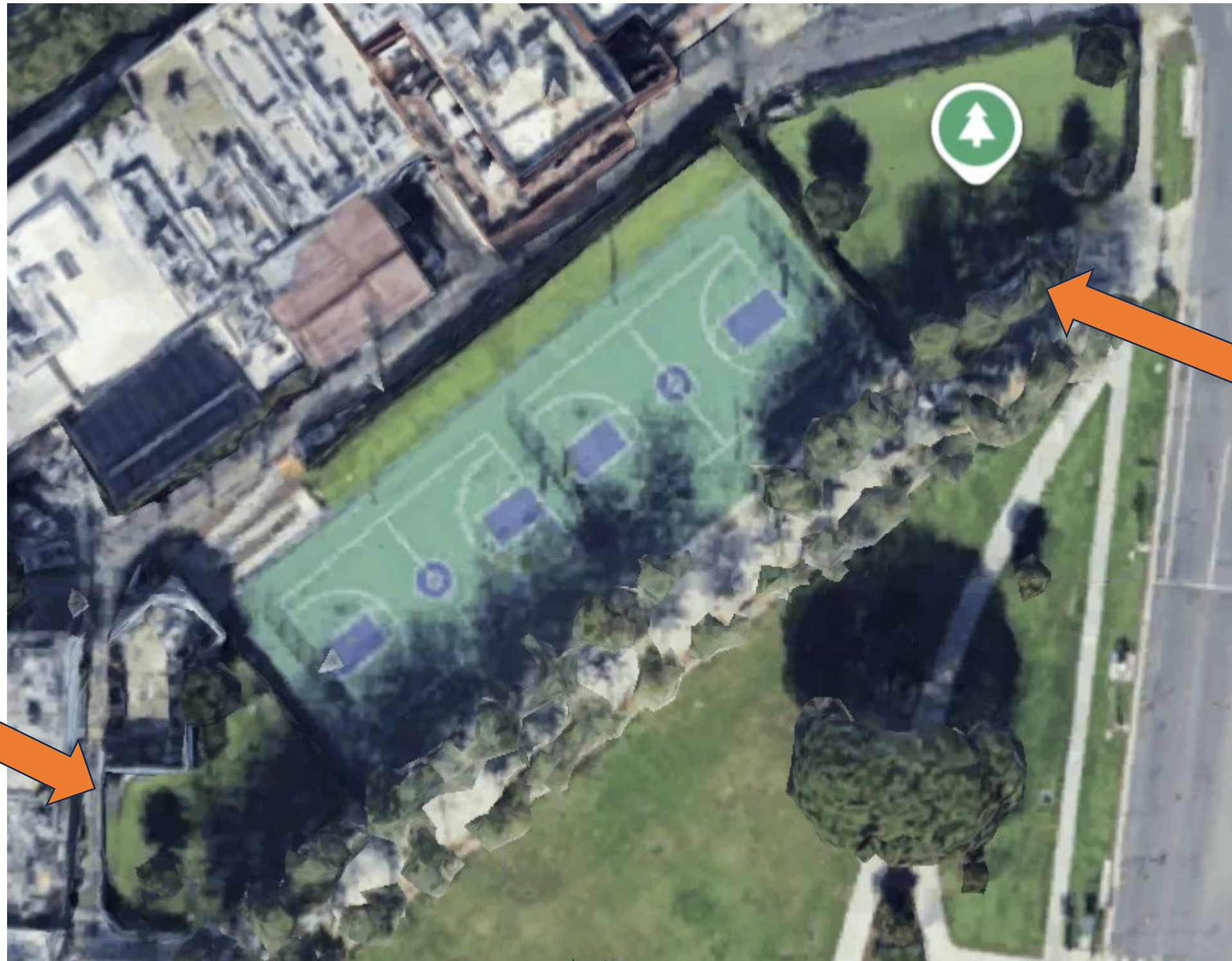
- Natural rocks scattered in park give dogs place to jump / sit
- No “borders” around trees and they appear healthy despite heavy park use



## B) WeHo – West Hollywood Dog Park



- WeHo currently has 2 dog parks (is building a 3<sup>rd</sup>). One has artificial turf, the other woodchips.
- West Hollywood Dog Park (4,485sf + 7,065sf) opened 2018.



**Small  
Dogs**

**Big  
Dogs**

# WeHo – West Hollywood Dog Park



## WHY INTERESTING?

- Surface is all turf with undulating hills (used K-9 brand turf).
- 4' black chain link fence (only 6' at the entrance).
- Aesthetically pleasing shrubbery grows on fence on some sides of park for privacy. Seems to weather ongoing dog pee well.



# WeHo – West Hollywood Dog Park



## WHY INTERESTING?

- Seating built around some trees



- Other trees surrounded by tree wells



# WeHo – West Hollywood Dog Park



## WHY INTERESTING?

- Colorful signage on weatherproof vinyl board that is changed periodically (pops out and easy to read)
- Signage says city has “no liability....”
- Signage says “park is “primarily a self-enforcing community” and suggests people to “encourage” others to follow the rules



# WeHo – West Hollywood Dog Park



## WHY INTERESTING?

- In April 2025, WeHo launched a “ScoopIt” campaign
- Campaign included public service announcements (PSAs) in digital transit shelters, pedestrian kiosks, and information displays at City parks and facilities.
- PSAs reinforced the message that picking up only takes a few seconds and that it is part of responsibilities as a pet guardian. Detailed messaging highlighted the health and environmental benefits of picking up pet waste and leashing dogs, while also reinforcing the relevant laws.



# WeHo – West Hollywood Dog Park

---



## RECENTLY AUTHORIZED “WEST HOLLYWOOD DOG PARKS TURF REPAIR PROJECT”

- City prefers turf over woodchips because “it can be cleaned, unlike woodchips, which tend to hold bacteria.”
- Currently replacing artificial turf in WeHo park after 8 years (“Typically, the life expectancy for artificial turf at dog parks is between 7-15 years depending on daily use traffic and maintenance activities. Dog parks with a smaller square footage require more frequent repairs because they experience higher impact and overall usage”).
- City’s maintenance procedures at their dog parks include twice daily, weekly mid-day, weekly night, and monthly cleaning activities. They contract out to a janitorial firm for this.
- Project will use the company ForeverLawn, Inc. to replace turf with newer product that has improved durability, improve grading, create better drainage based on debris and hair removal.
- Total cost not to exceed \$275,000.

# Analysis of Dog Park Surfaces in 2024 from WeHo Parks & Rec Staff

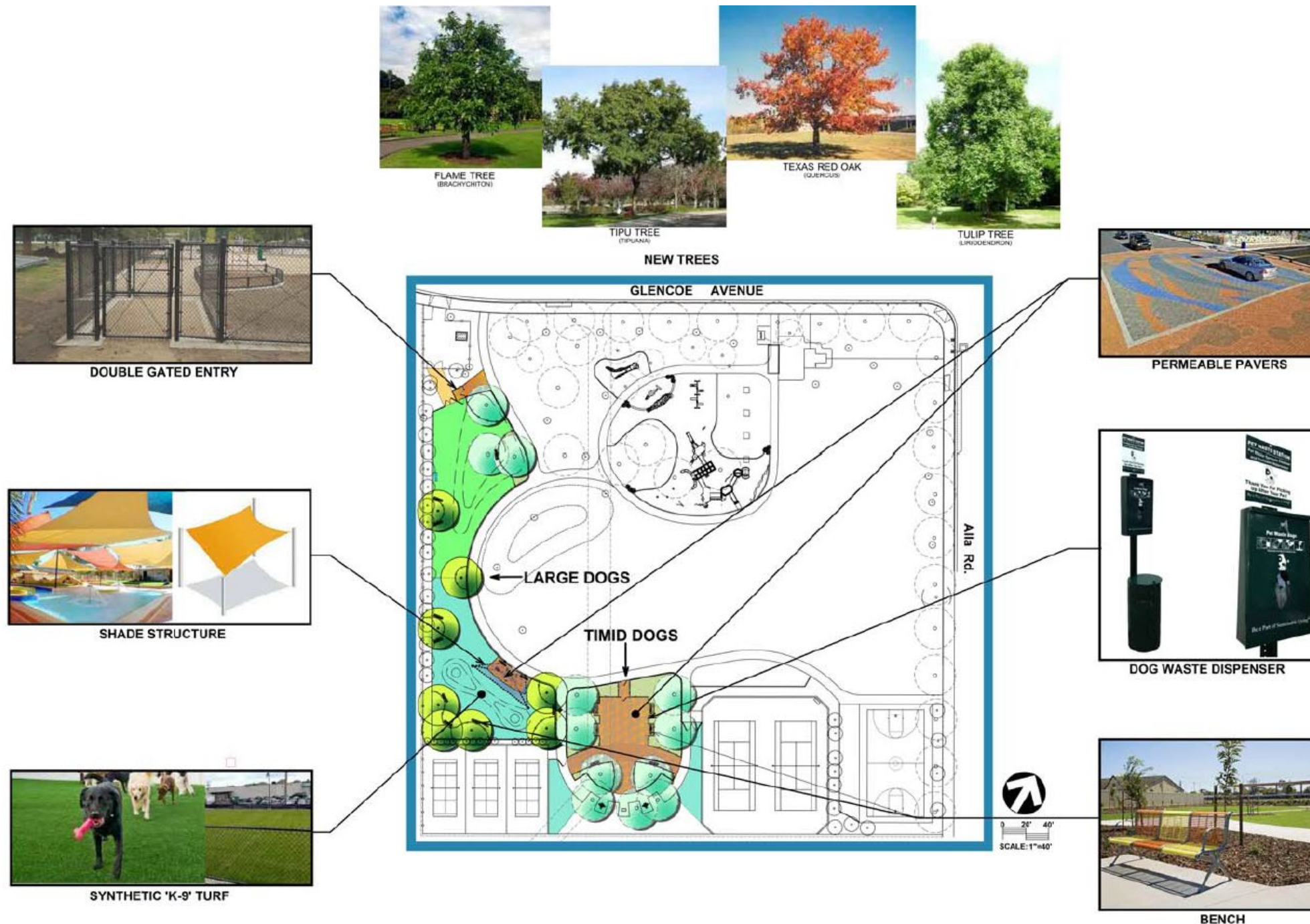


Surface Material Comparison				
Criteria	Artificial Turf (No Infill)	Engineered Wood Fiber (EWF)	Natural Grass	Decomposed Granite (DG)
<b>Sanitation &amp; Health</b>	Non-absorbent surface allows for easy cleaning of pet waste, reducing bacterial buildup. Absence of PFAS and infill materials minimizes exposure to harmful chemicals.	Organic material can retain moisture, potentially harboring bacteria, mold, and allergens if not properly maintained.	Susceptible to contamination from pet waste if not promptly removed. Requires regular maintenance to prevent the spread of parasites and bacteria.	Porous surface can absorb pet waste, leading to potential odor and bacterial issues. Stabilized versions can mitigate some concerns.
<b>Dust Generation</b>	Minimal dust production, reducing respiratory risks and maintaining cleanliness in adjacent areas.	Can produce wood dust, which is a known respiratory irritant and potential carcinogen.	Low dust generation under normal conditions.	Prone to dust, especially in dry conditions, which can affect air quality and cleanliness of nearby areas.
<b>Heat Index</b>	Can become significantly hotter than natural surfaces under direct sunlight.	Generally maintains moderate temperatures, though can become warm under direct sunlight.	Natural cooling effect through evapotranspiration, maintaining lower surface temperatures.	Surface can become hot in direct sunlight, though typically cooler than artificial turf.
<b>Durability</b>	High durability with a lifespan of 8–15 years, depending on usage and maintenance. Resistant to heavy foot traffic.	Moderate durability; compaction over time may require periodic replenishment.	Durability varies with maintenance; high foot traffic can lead to wear and bare spots.	Stabilized DG offers improved durability; however, it can erode over time and may require replenishment.
<b>Maintenance</b>	Low maintenance requirements; periodic cleaning and grooming to maintain appearance and hygiene.	Requires regular raking and topping to maintain safety and appearance.	High maintenance needs, including mowing, watering, fertilizing, and pest control.	Needs periodic regrading and replenishment to maintain surface integrity, especially after heavy use or weather events.

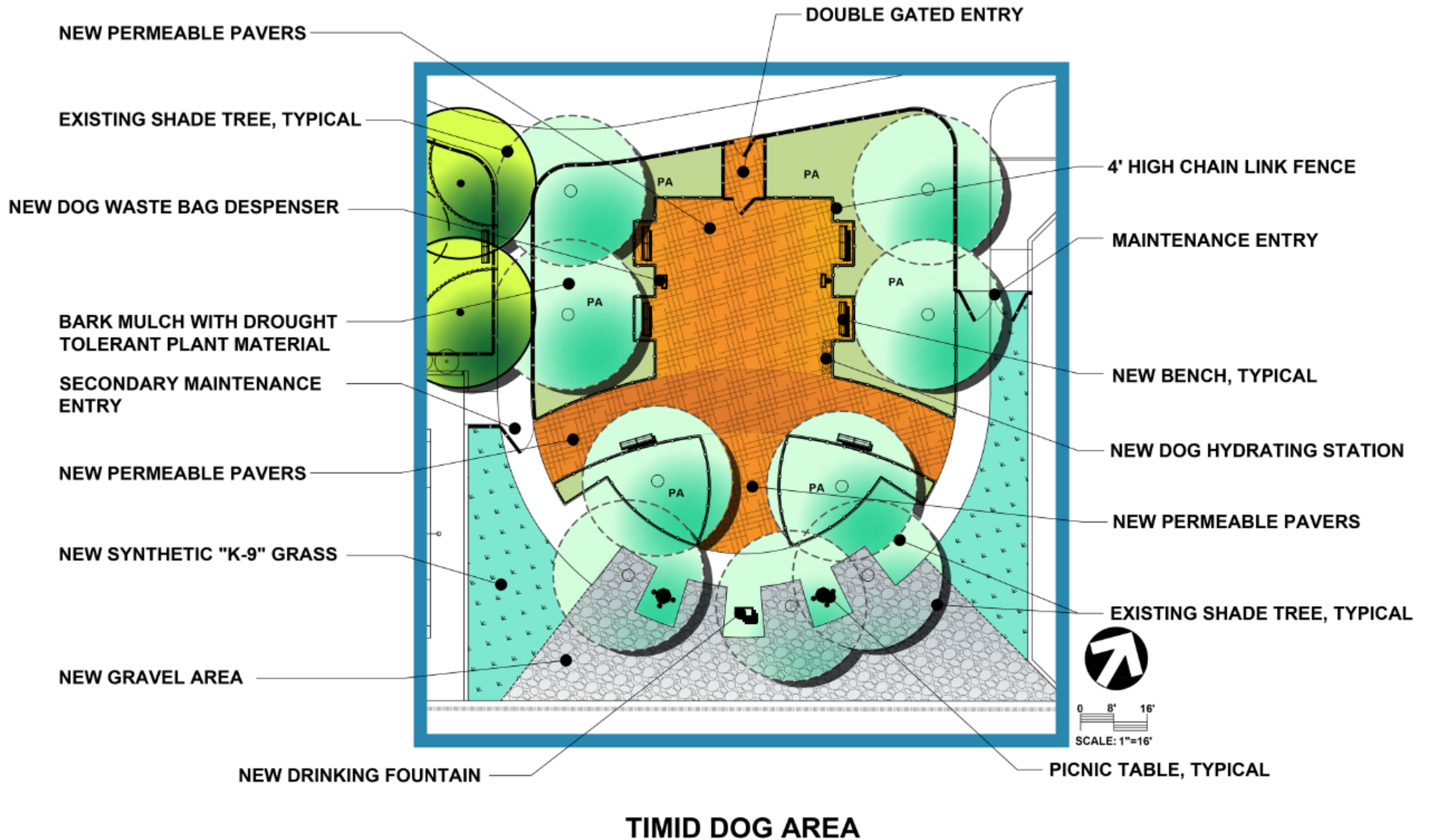
# C) Marina del Rey – Glen Alla Dog Park



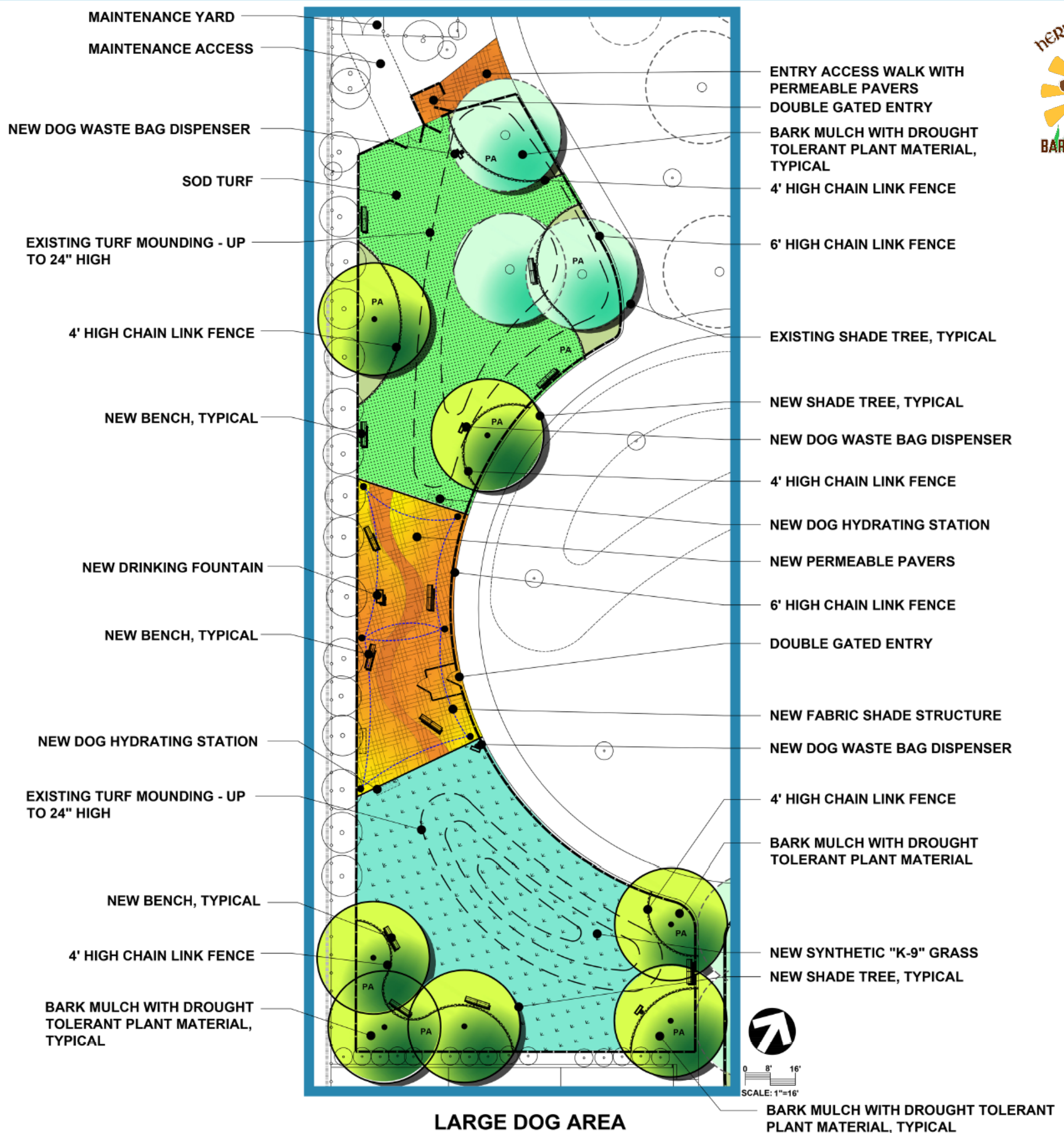
- .35 acres (15,246sf).
- Large and Timid Dog Area.
- Approved 2018 at cost of Cost \$830,000. 3 community meetings were held during design phase to get input.



# Glen Alla Dog Park – Timid Dog Schematic



# Glen Alla - Large Dog Schematic



# Marina del Rey – Glen Alla Dog Park



## WHY INTERESTING?

- Surface is artificial turf with barriers filled with native plants.
- Water area for dogs is on a concrete pad for easier cleanup.



# Marina del Rey – Glen Alla Dog Park



## WHY INTERESTING?

- Artificial turf has been applied over tree roots.



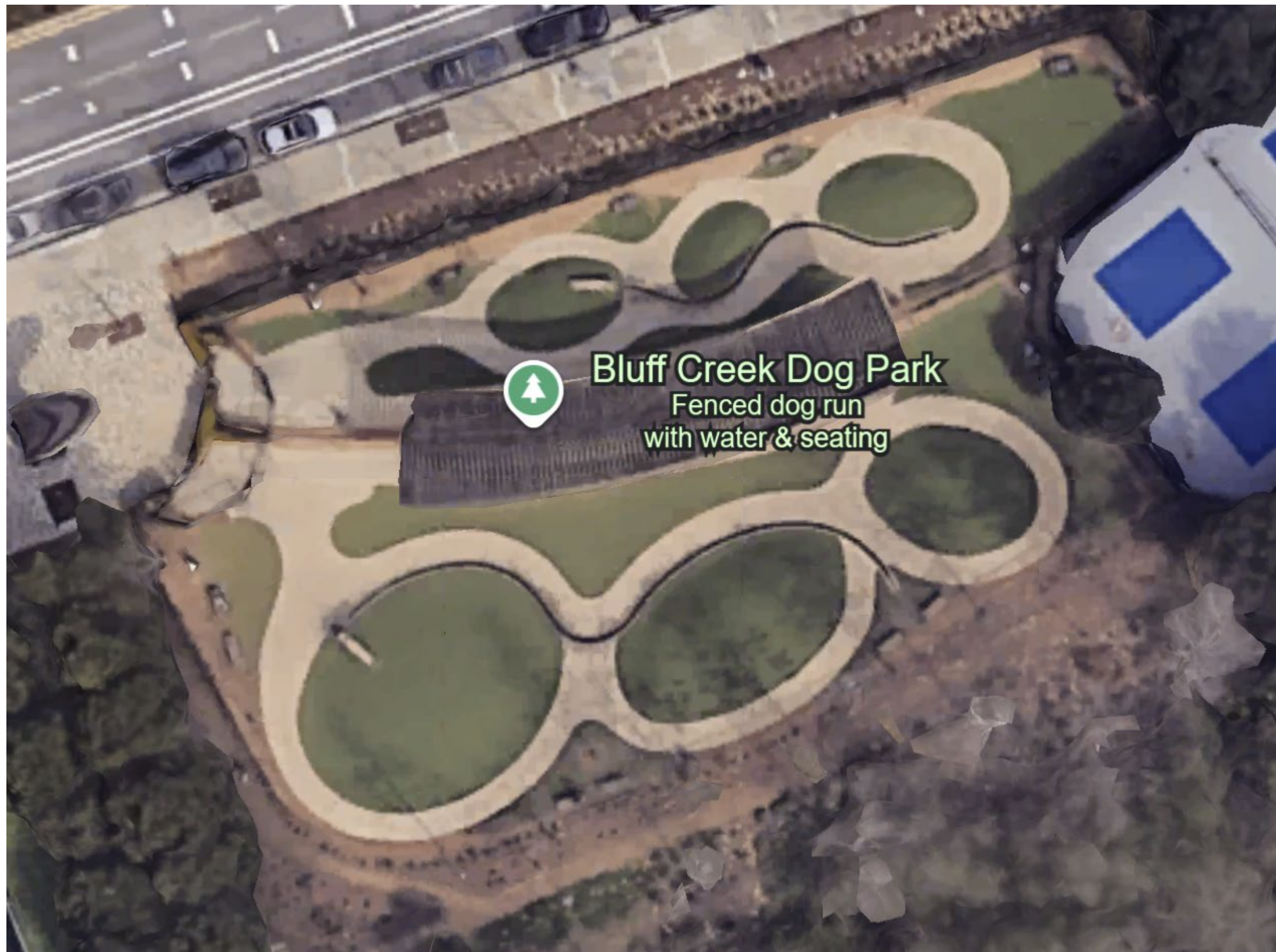
- Artificial turf has been applied up to trunks of other trees.



## D) Playa Vista – Bluff Creek Park



- 17,746sf dog park built in 2017 that is funded and managed by the HOA of Playa Vista.
- Small and Big dog area.
- Dawn to dusk.



# Playa Vista – Bluff Creek Park



## WHY INTERESTING?

- Mixed surfaces with combination of artificial turf, DG and concrete (also has a water feature).
- Aesthetically pleasing shrubbery grows on fence on street side of the park for privacy. Seems to weather ongoing dog pee well.



# Marina del Rey – Glen Alla Dog Park



## WHY INTERESTING?

- Artificial turf mounds create small hills in the park that dogs run up and down.
- No structures around trees to protect them but most have tree wells packed with DG.



# Playa Vista – Bluff Creek Park



## WHY INTERESTING?

- Humorous signage encourages poop clean up
- Small dog area says “Geriatric dogs permitted at owner’s risk”



# SUMMARY

---



- Assuming a location can be agreed to for an off-leash dog park in the City, some of these elements might be incorporated into our park design.
- If more detail is desired for any of these parks, Bark for a Park (BFAP) can work to acquire that information using our contacts at each park.
- BFAP has been in discussion with a dog park designer who has agreed to look at our top locations, brainstorm what could be done with each space to help in the finalization of a location.

## 2. IDEA – How City could raise \$ for maintenance



### CURRENTLY

- The City sold 1,404 licenses in 2023 and 1,368 in 2024.
- Significant number of dogs NOT licensed (we estimate at least 3,000 dogs). Many owners have told us they don't see the value.
- License fee for altered dog in 2026 is \$29.75.

### SUGGESTION

- Increase license fee by \$5 a dog (raises \$6,840 based on 1,368).
- Bark for a Park works with city on campaign to increase license numbers including having license checks at the park.
- If could increase dog numbers by 400 brings in additional \$13,900.
- Raises at least \$20,740 which could go to dog park maintenance.

<b>Fee Increase</b>	\$5	\$10
<b>Dog Increase</b>	400	500
<b>Total Raised</b>	\$ 20,740	\$ 33,555

# ADDITIONAL SLIDES

---



## West Hollywood Dog Park Hours

- 6am-12am 7 days a week

## Tree Seating Example

- From DogPPL in Santa Monica

