

1100 PACIFIC COAST HWY

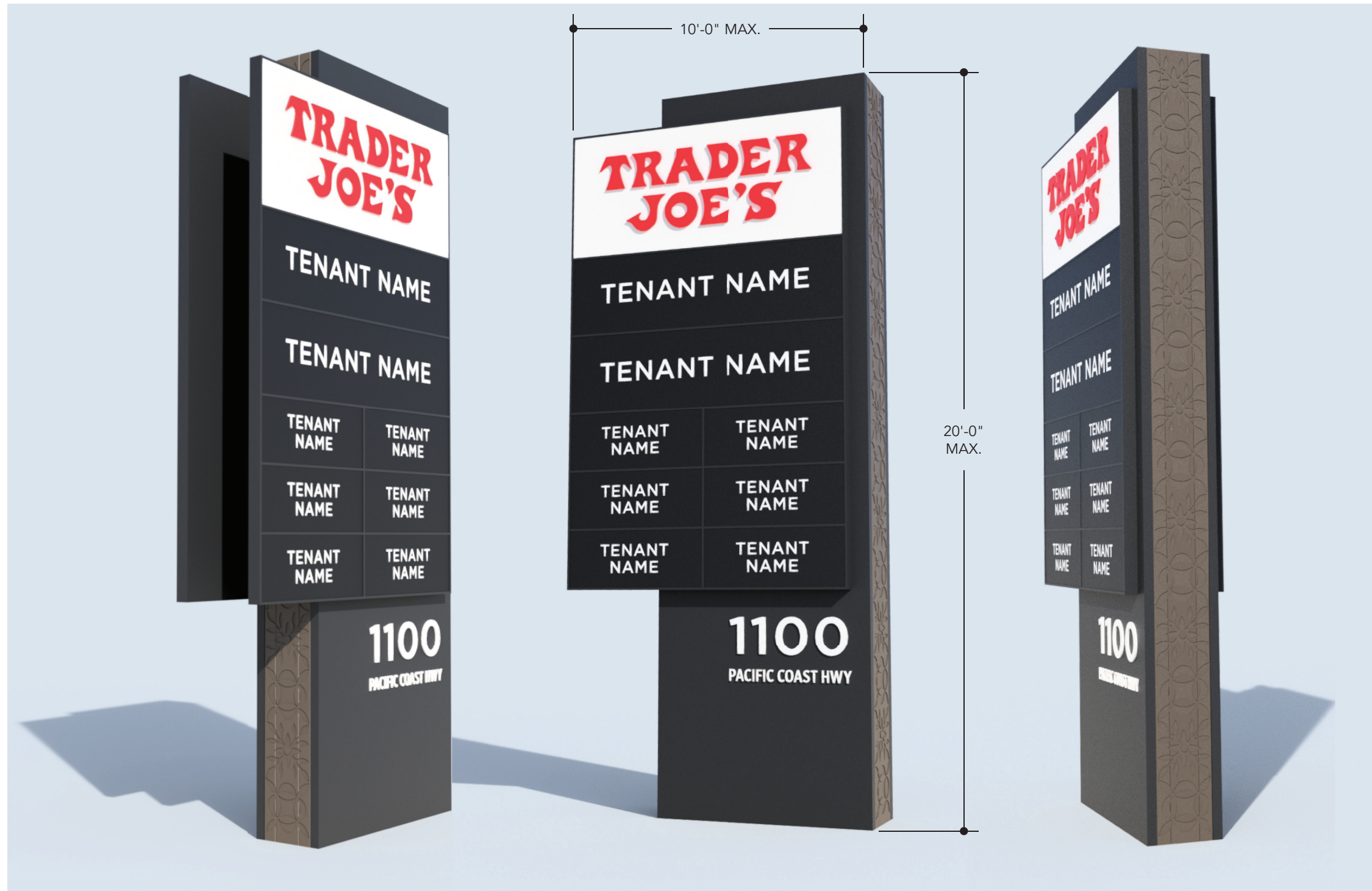
SIGNAGE
10.27.25



LEGEND

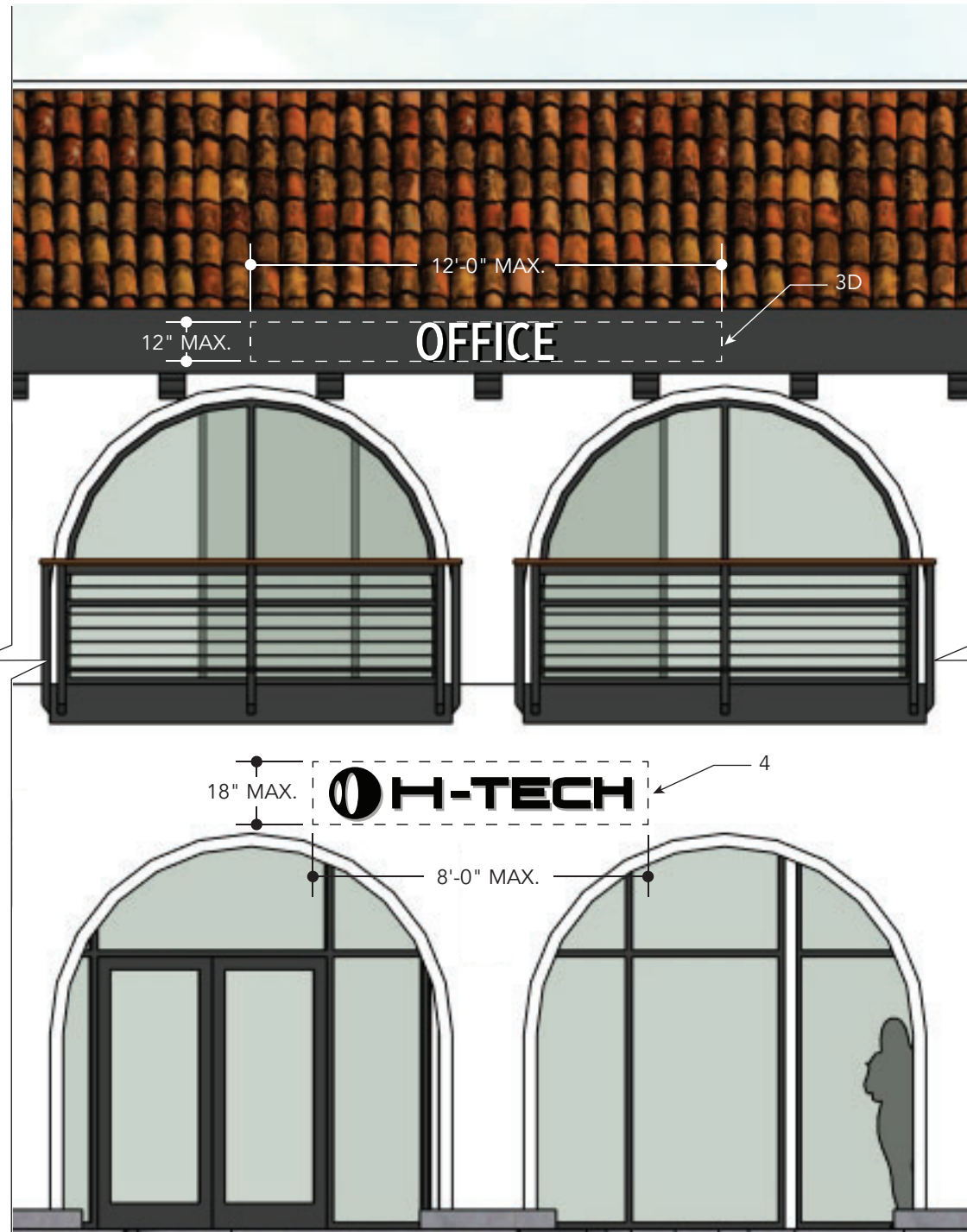
- 1 Pole Sign
- 2A Multi-Tenant Sign
- 2B Back Lot Multi-Tenant Sign
- 3A Primary Business Sign
- 3B Primary Business Parapet Sign
- 3C Primary Business Tower Sign Primary
- 3D Business Fascia Sign Secondary
- 4 Business Sign
- 5 Building Identification Sign
(Address)
- Property Line

SITE PLAN
SCALE: 1" = 50'

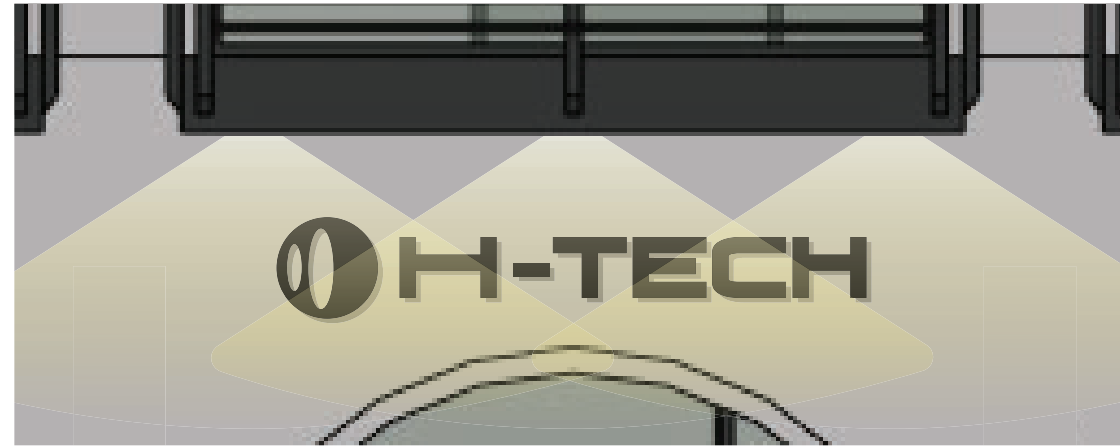


3D RENDERING - POLE SIGN
SCALE: NTS

PRIMARY FRONTAGE MAX. SIGN AREA = APPROX. 385 SQFT.
 SECONDARY FRONTAGE MAX. SIGN AREA = APPROX. 90 SQFT.
 PROPOSED SIGNAGE APPEARS TO BE UNDER WHAT IS ALLOWED.



TENANT SIGNS (SIGN TYPES 3D & 4)
 SCALE: NTS



SIMULATED ILLUMINATION (EXACT METHOD TBD)
 SCALE: NTS



FULL ELEVATION (SIGN TYPES 3D, 4)
 SCALE: NTS



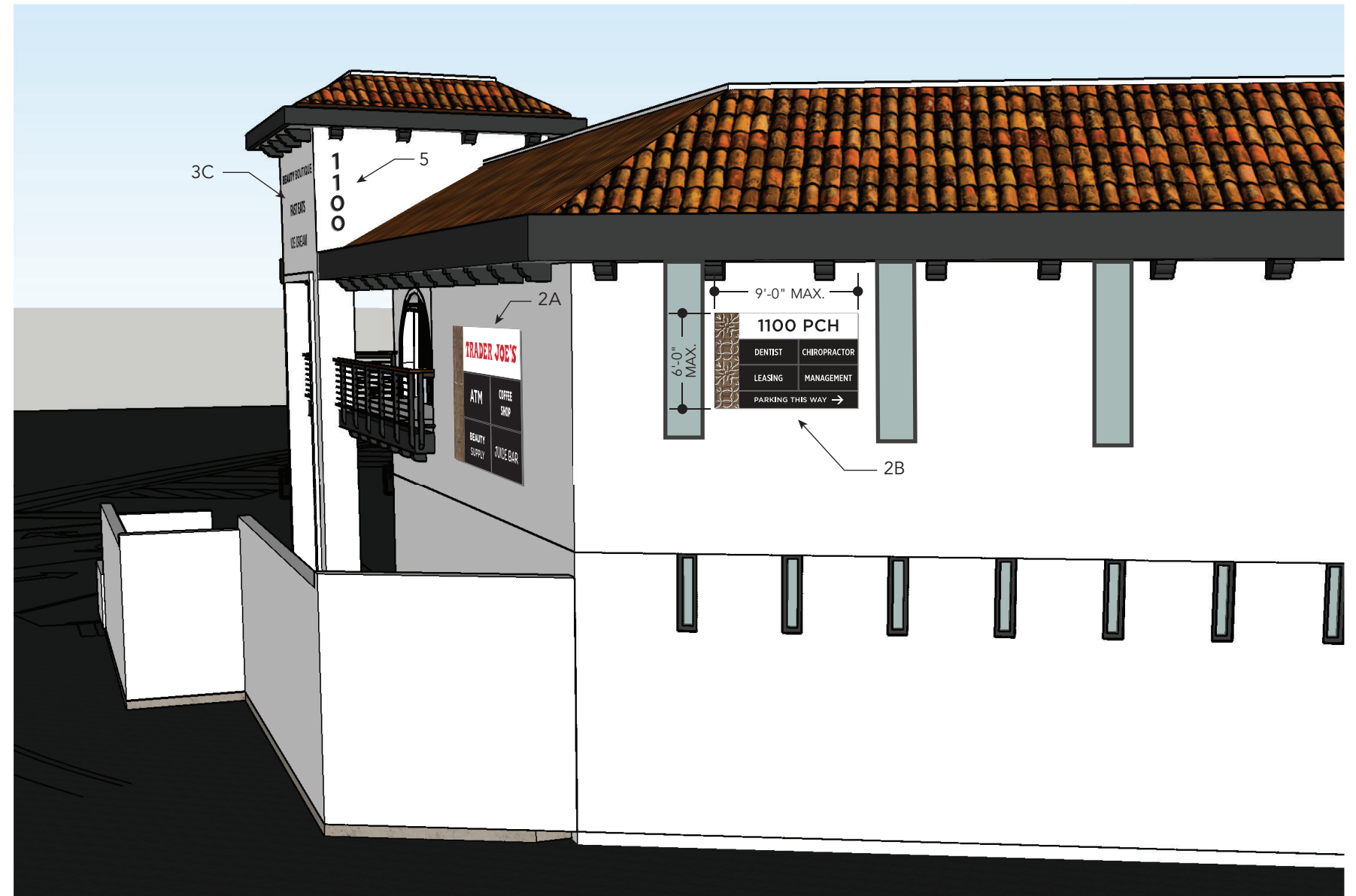
3D RENDERING - VIEW A
SCALE: NTS



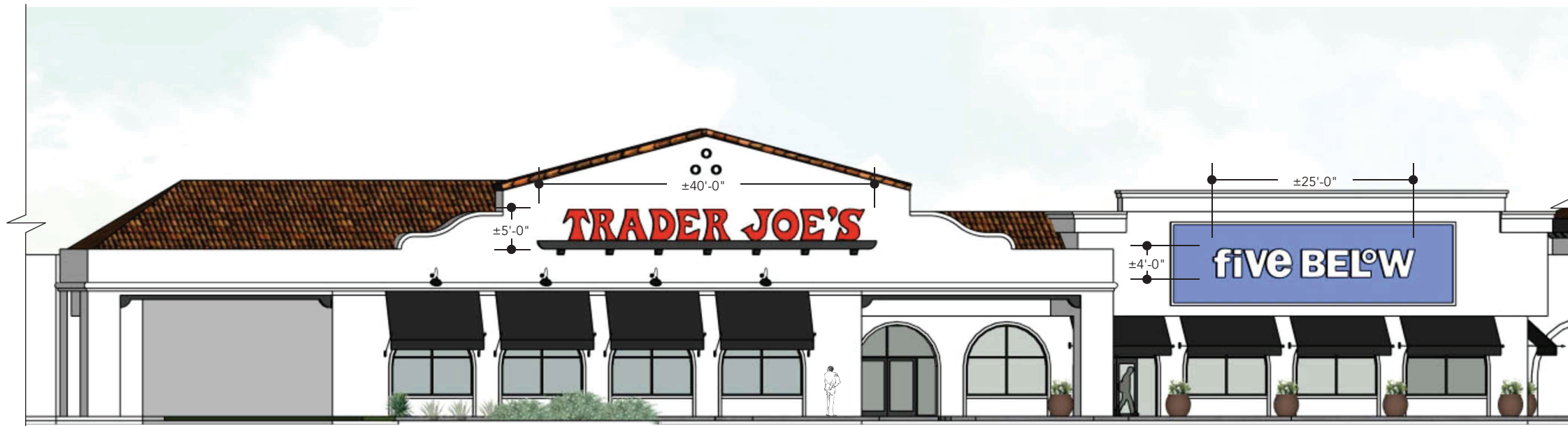
3D RENDERING - VIEW B
SCALE: NTS



BACK LOT MULTI-TENANT SIGN
SCALE: NTS



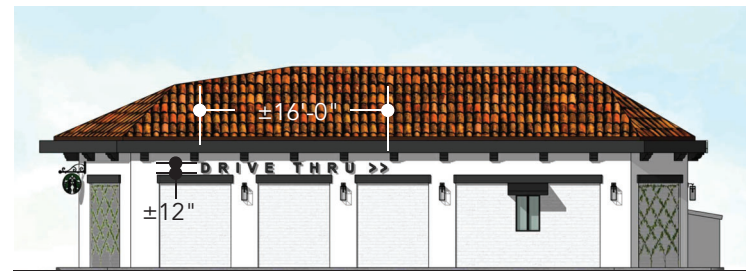
PROPOSED SIGN LOCATION
SCALE: NTS



WEST ELEVATION

PRIMARY BUSINESS SIGNS - TRADER JOE'S & FIVE BELOW

SCALE: 1/16" = 1'-0"



EAST ELEVATION - 3A



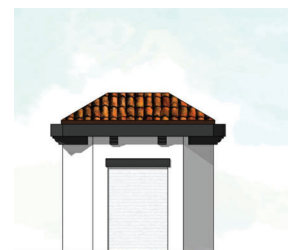
WEST ELEVATION - 3A, 3B



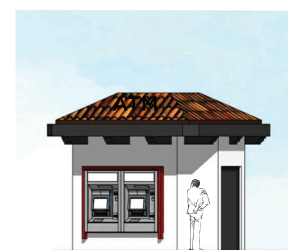
NORTH ELEVATION - 3D

PRIMARY BUSINESS SIGNS - COFFEE SHOP

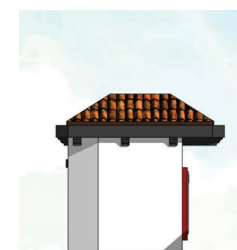
SCALE: 1/16" = 1'-0"



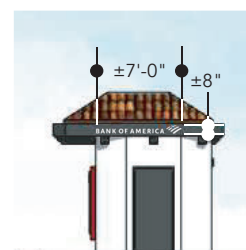
EAST ELEVATION



WEST ELEVATION



NORTH ELEVATION



SOUTH ELEVATION - 3D

PRIMARY BUSINESS SIGNS - ATM KIOSK

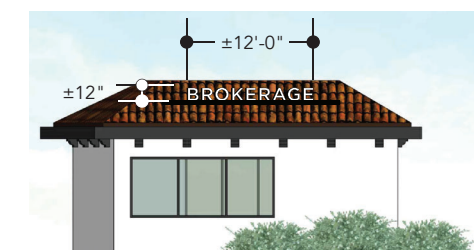
SCALE: 1/16" = 1'-0"



EAST ELEVATION - 3D



SOUTH ELEVATION - 3D



WEST ELEVATION - 3B

PRIMARY BUSINESS SIGNS - BROKERAGE

SCALE: 1/16" = 1'-0"



FULL WEST ELEVATION (SIGN TYPES 3A, 3B & 4)
SCALE: NTS