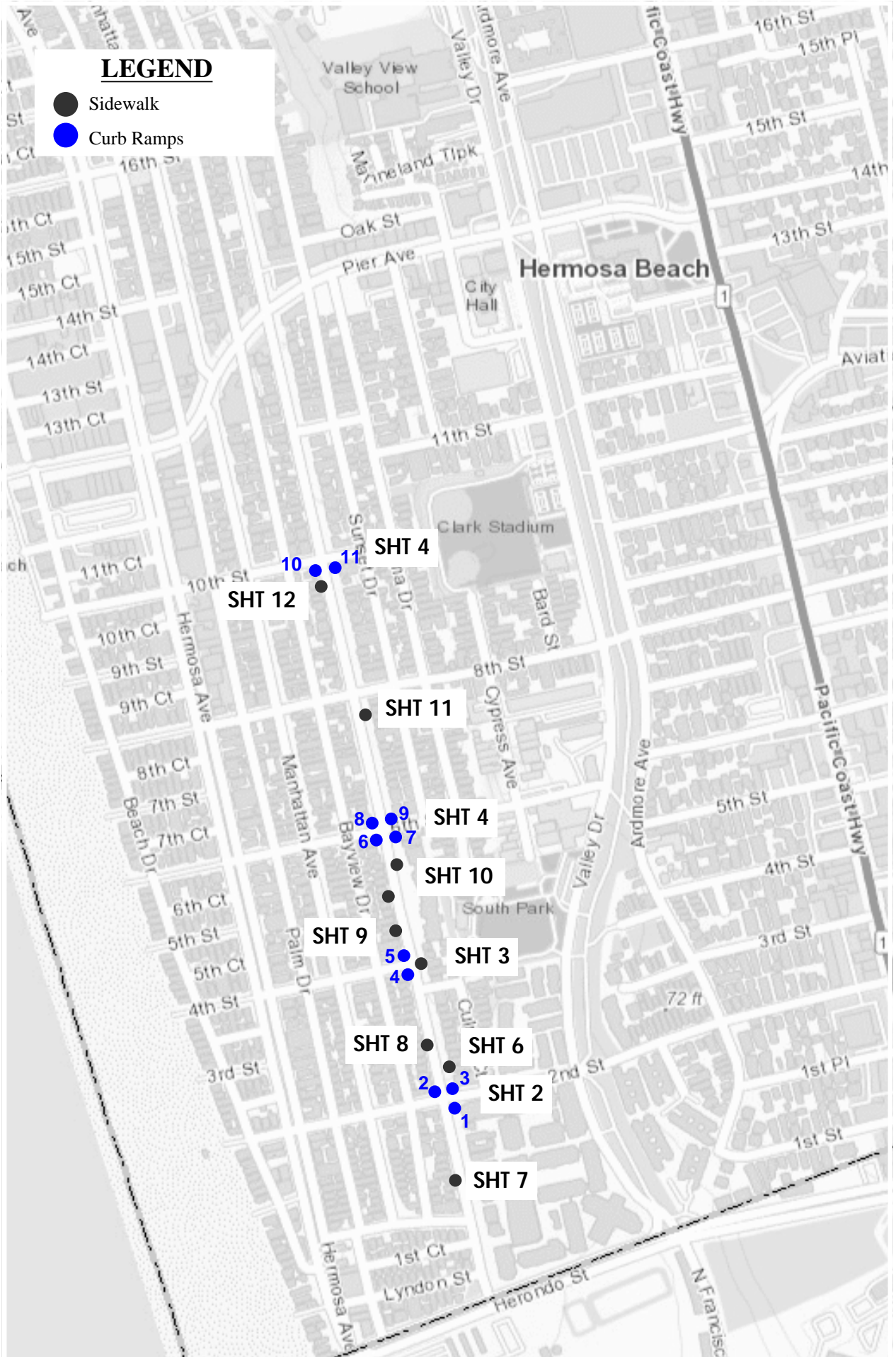


**CDBG Project 602732-25  
Monterey Boulevard ADA Sidewalks & Access Ramps  
CIP NO. 626**

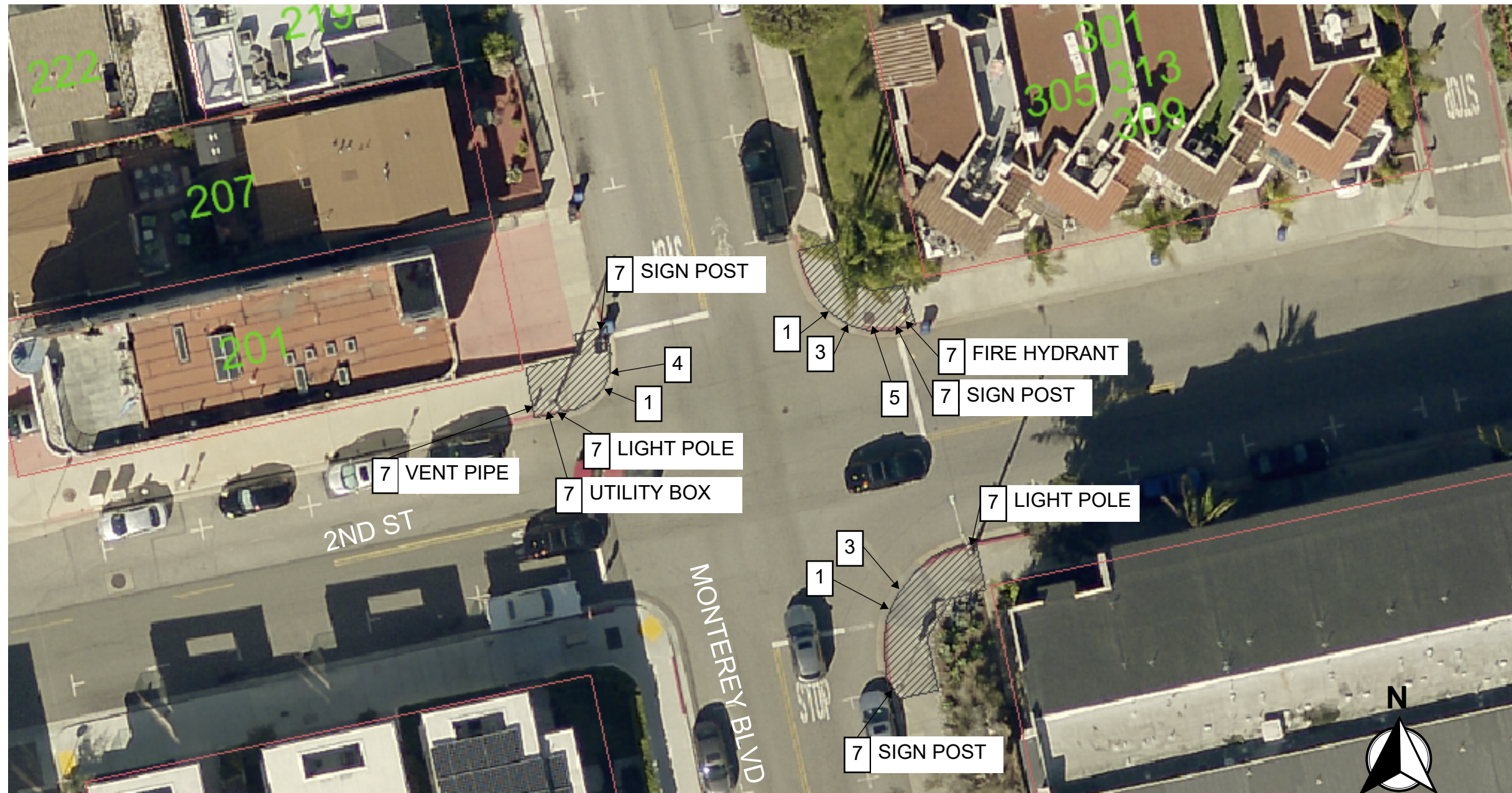
**APPENDIX A**

**SIDEWALK AND CURB RAMPS  
LOCATIONS**

# LOCATION OVERVIEW



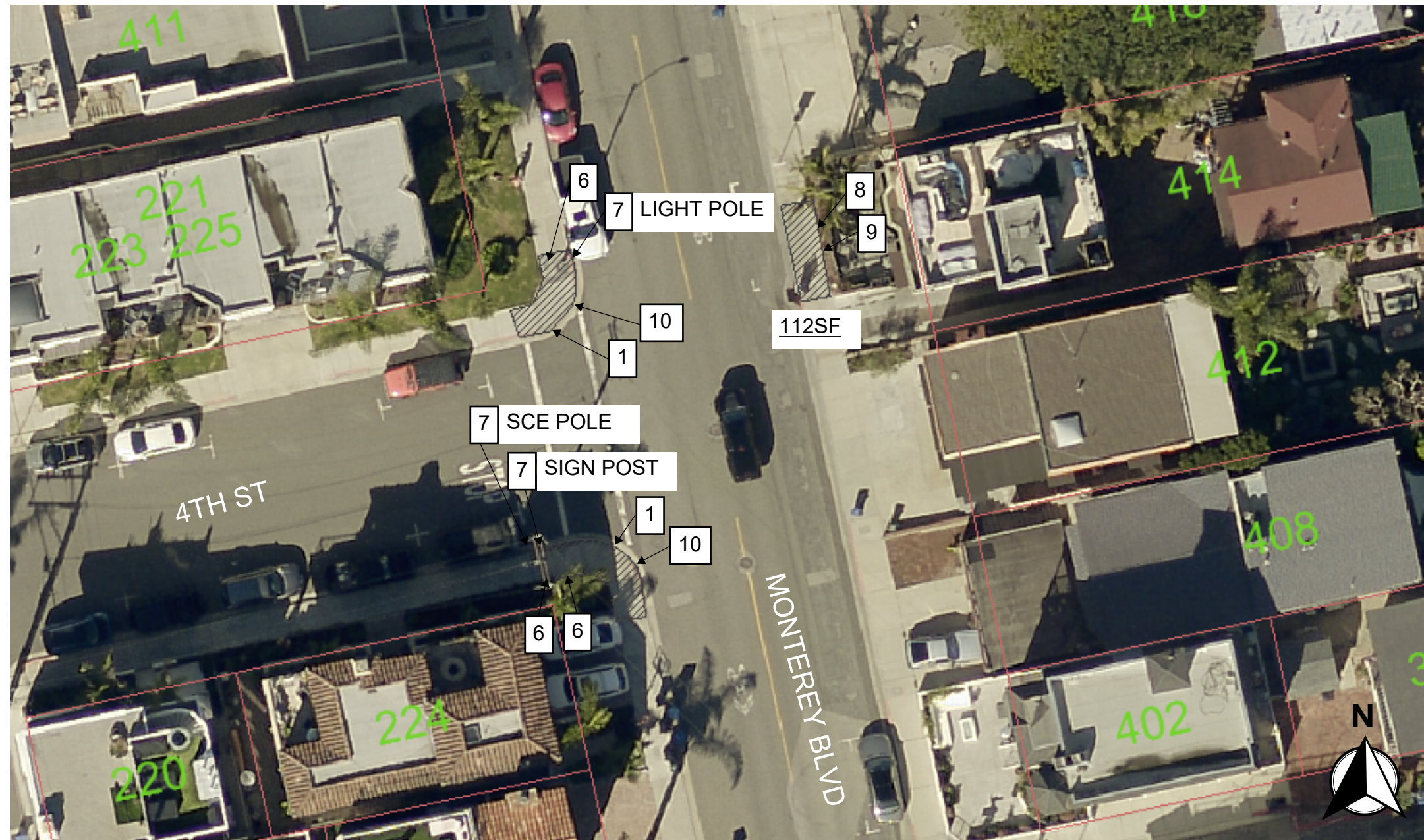
# Monterey Boulevard and 2nd Street, Hermosa Beach, CA 90254



## **CONSTRUCTION NOTES**

- 1 REMOVE EXISTING CURB RAMP
- 3 CONSTRUCT ADA COMPLIANT PCC CURB RAMP PER SPPWC STD PLAN 111-5, CASE A, TYPE 6
- 4 CONSTRUCT ADA COMPLIANT PCC CURB RAMP PER SPPWC STD PLAN 111-5, CASE B, TYPE 2
- 5 ADJUST SEWER MANHOLE TO GRADE
- 7 PROTECT IN PLACE

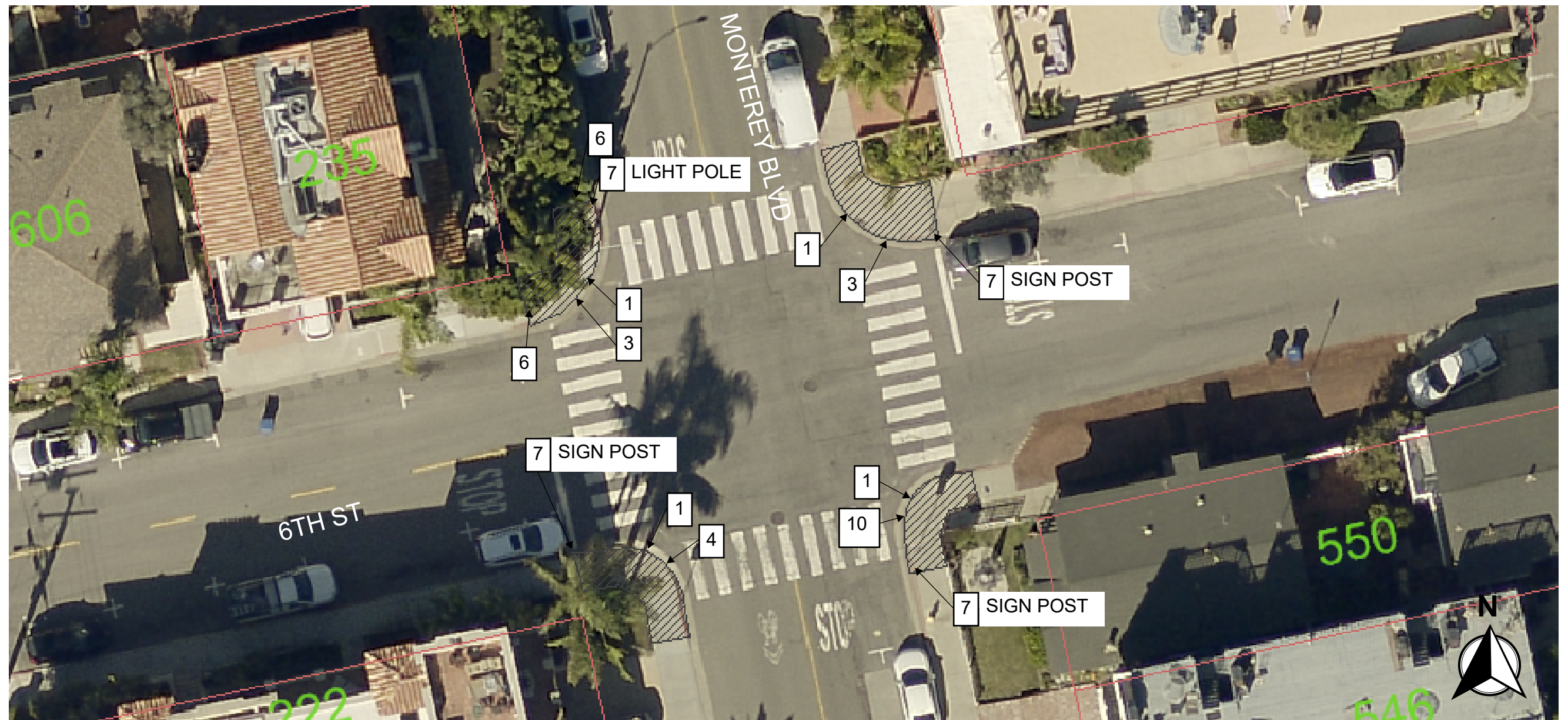
# Monterey Boulevard and 4th Street, Hermosa Beach, CA 90254



## **CONSTRUCTION NOTES**

- 1 REMOVE EXISTING CURB RAMP
- 6 ADJUST UTILITY COVER TO GRADE
- 7 PROTECT IN PLACE
- 8 REMOVE EXISTING SIDEWALK
- 9 CONSTRUCT 4" PCC SIDEWALK. MATCH EXISTING.
- 10 CONSTRUCT ADA COMPLIANT PCC CURB RAMP PER SPPWC STD PLAN 111-5, CASE A, TYPE 4

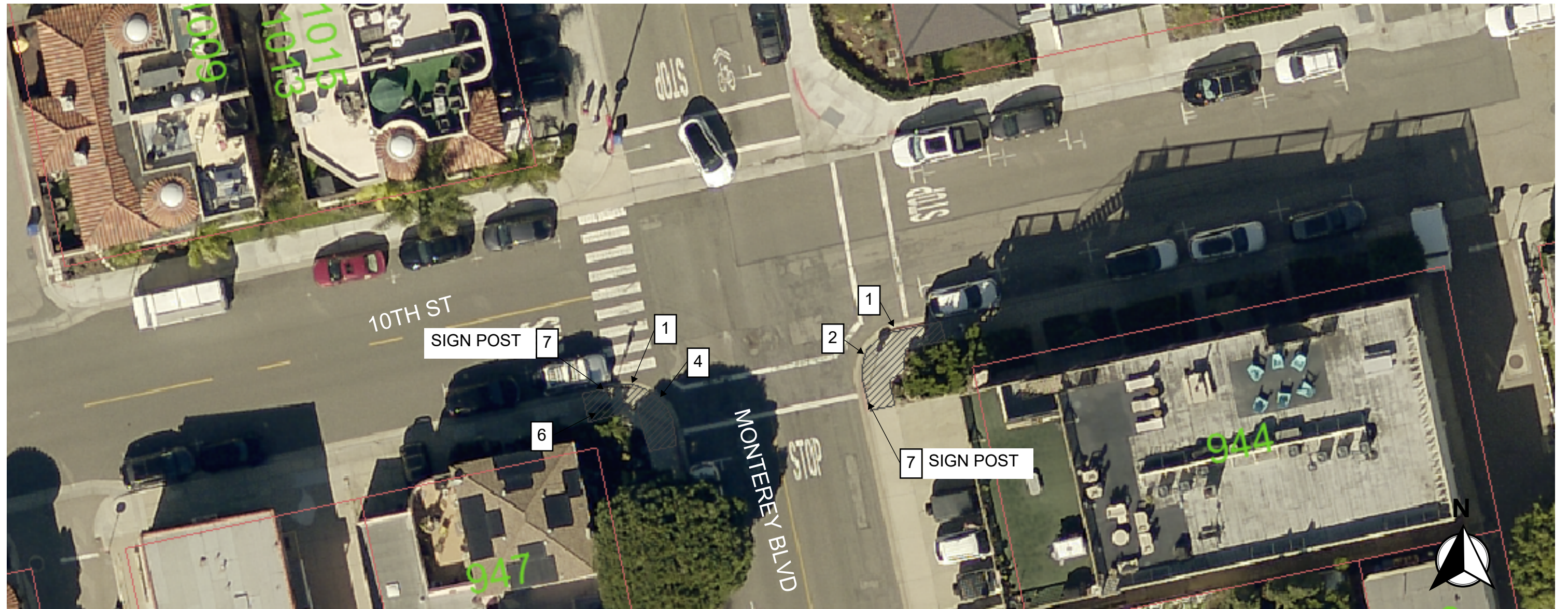
# Monterey Boulevard and 6th Street, Hermosa Beach, CA 90254



## **CONSTRUCTION NOTES**

- 1 REMOVE EXISTING CURB RAMP
- 3 CONSTRUCT ADA COMPLIANT PCC CURB RAMP PER SPPWC STD PLAN 111-5, CASE A, TYPE 6
- 4 CONSTRUCT ADA COMPLIANT PCC CURB RAMP PER SPPWC STD PLAN 111-5, CASE B, TYPE 2
- 6 ADJUST UTILITY COVER TO GRADE
- 7 PROTECT IN PLACE
- 10 CONSTRUCT ADA COMPLIANT PCC CURB RAMP PER SPPWC STD PLAN 111-5, CASE A, TYPE 4

# Monterey Boulevard and 10th Street, Hermosa Beach, CA 90254



## **CONSTRUCTION NOTES**

- 1 REMOVE EXISTING CURB RAMP
- 2 CONSTRUCT ADA COMPLIANT PCC CURB RAMP PER SPPWC STD PLAN 111-5, CASE A, TYPE 3
- 4 CONSTRUCT ADA COMPLIANT PCC CURB RAMP PER SPPWC STD PLAN 111-5, CASE B, TYPE 2
- 6 ADJUST UTILITY COVER TO GRADE
- 7 PROTECT IN PLACE

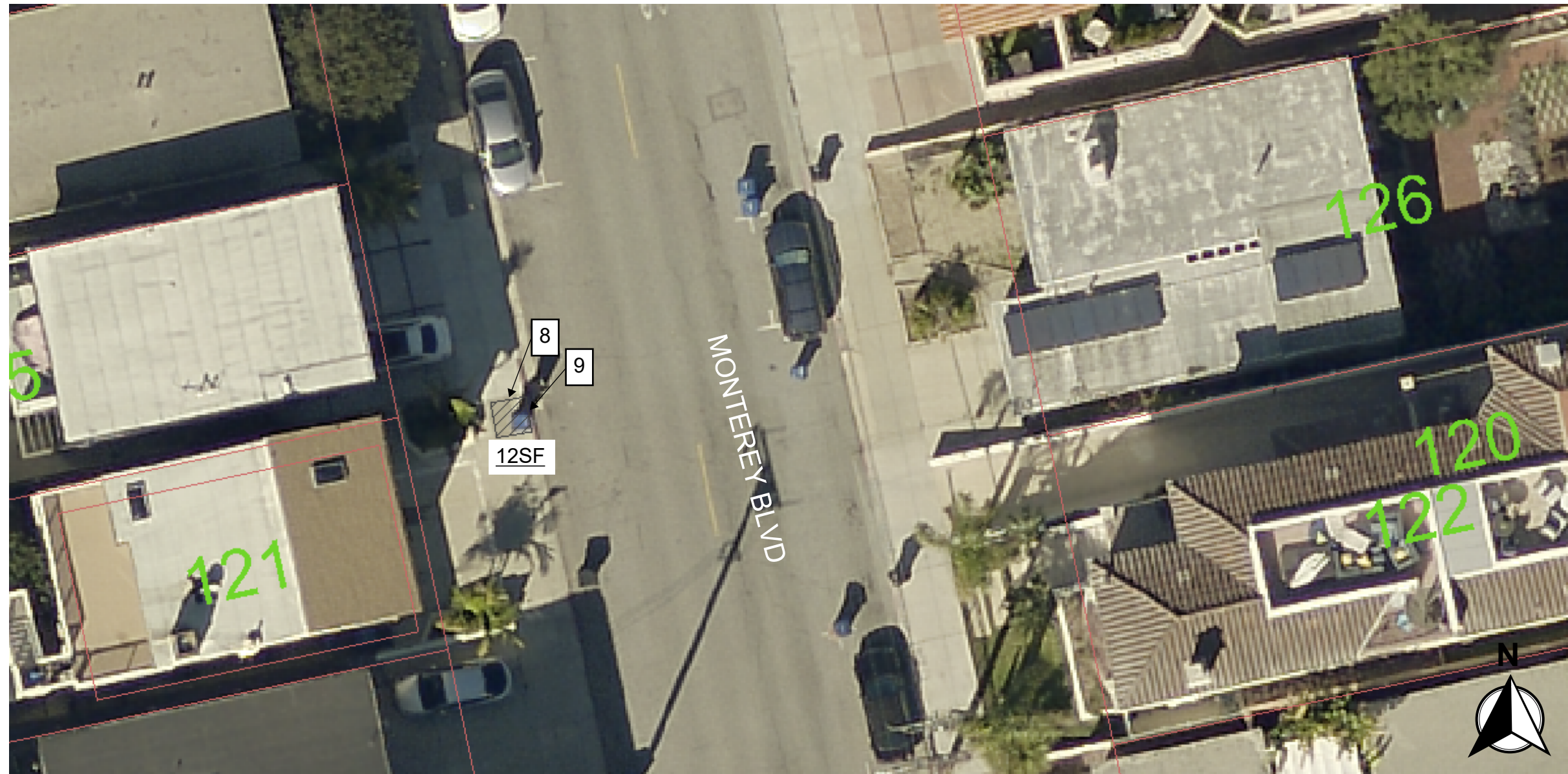
# 301 2nd Street, Hermosa Beach, CA 90254



## CONSTRUCTION NOTES

- 8 REMOVE EXISTING SIDEWALK
- 9 CONSTRUCT 4" PCC SIDEWALK. MATCH EXISTING.

# 121 Monterey Boulevard, Hermosa Beach, CA 90254



## CONSTRUCTION NOTES

- 8 REMOVE EXISTING SIDEWALK
- 9 CONSTRUCT 4" PCC SIDEWALK. MATCH EXISTING.

# 309 Monterey Blvd, Hermosa Beach, CA 90254



## CONSTRUCTION NOTES

- 8 REMOVE EXISTING SIDEWALK
- 9 CONSTRUCT 4" PCC SIDEWALK. MATCH EXISTING.

# 435 Monterey Blvd, Hermosa Beach, CA 90254



## CONSTRUCTION NOTES

- 8 REMOVE EXISTING SIDEWALK
- 9 CONSTRUCT 4" PCC SIDEWALK. MATCH EXISTING.

# 446 & 515 Monterey Blvd, Hermosa Beach, CA 90254



## CONSTRUCTION NOTES

- 8 REMOVE EXISTING SIDEWALK
- 9 CONSTRUCT 4" PCC SIDEWALK. MATCH EXISTING.

# 726 Monterey Blvd, Hermosa Beach, CA 90254



## CONSTRUCTION NOTES

- 8 REMOVE EXISTING SIDEWALK
- 9 CONSTRUCT 4" PCC SIDEWALK. MATCH EXISTING.

# 947 Monterey Blvd, Hermosa Beach, CA 90254



## CONSTRUCTION NOTES

- 8 REMOVE EXISTING SIDEWALK
- 9 CONSTRUCT 4" PCC SIDEWALK. MATCH EXISTING.

**CDBG Project 602732-25**  
**Monterey Boulevard ADA Sidewalks & Access Ramps**  
**CIP NO. 626**

**APPENDIX B**

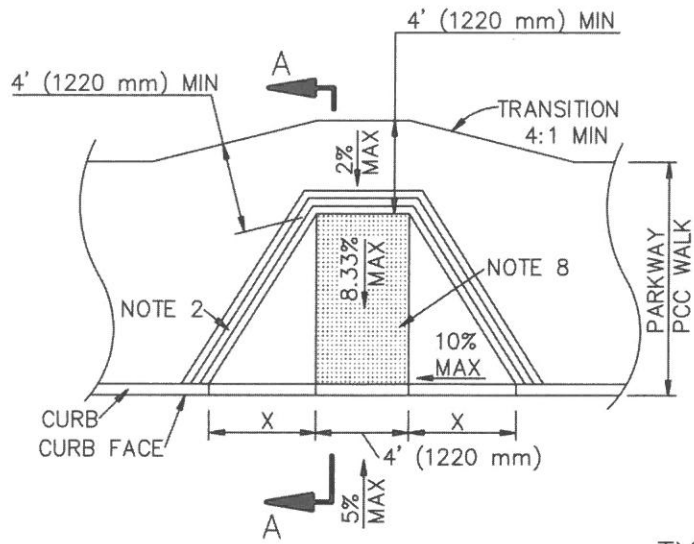
**CITYWIDE TRUCK ROUTE MAP**



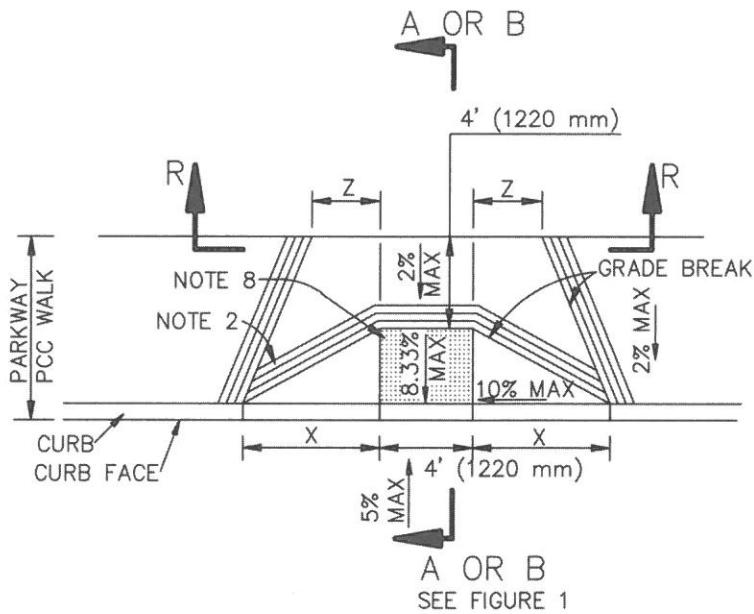
**CDBG Project 602667-23**  
**Valley Drive and Monterey Avenue ADA Sidewalks & Access Ramps**  
**CIP NO. 624**

**APPENDIX C**

**SPPWC STANDARD PLANS**



TYPE 1



TYPE 2

CASE A

PARTS OF THIS STANDARD PLAN SHOW INSTALLATION FOR TYPICAL RETROFIT CONDITIONS, AND ARE NOT FULLY COMPLIANT WITH CALIFORNIA BUILDING CODE REQUIREMENTS FOR NEW DEVELOPMENT.

STANDARD PLANS FOR PUBLIC WORKS CONSTRUCTION

PROMULGATED BY THE  
PUBLIC WORKS STANDARDS INC.  
GREENBOOK COMMITTEE  
1992  
REV. 1996, 2000, 2005, 2009,  
2013

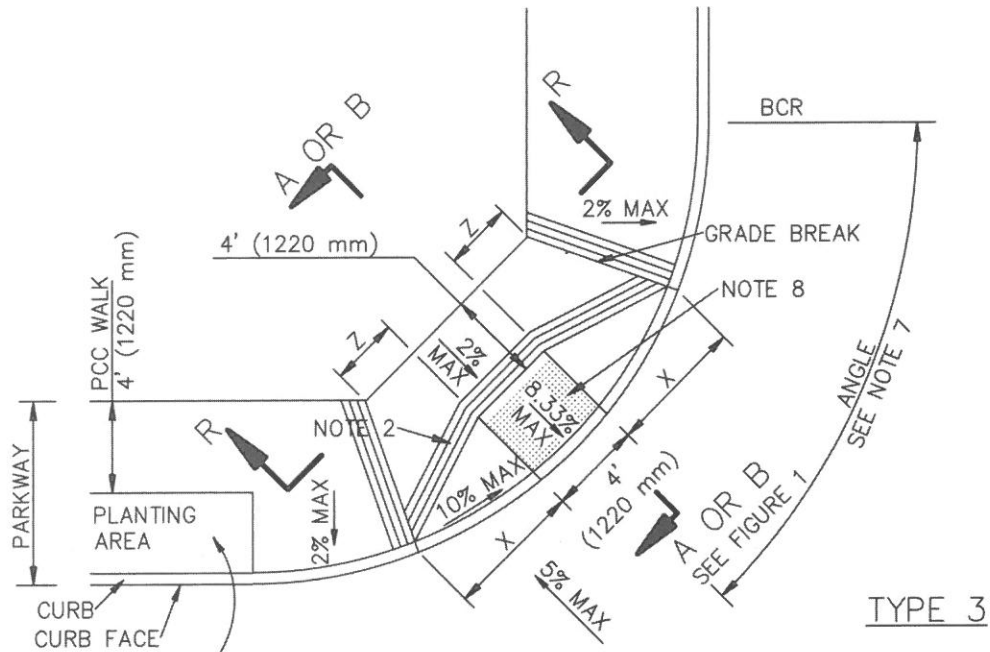
**CURB RAMP**

USE WITH STANDARD SPECIFICATIONS FOR PUBLIC WORKS CONSTRUCTION

STANDARD PLAN

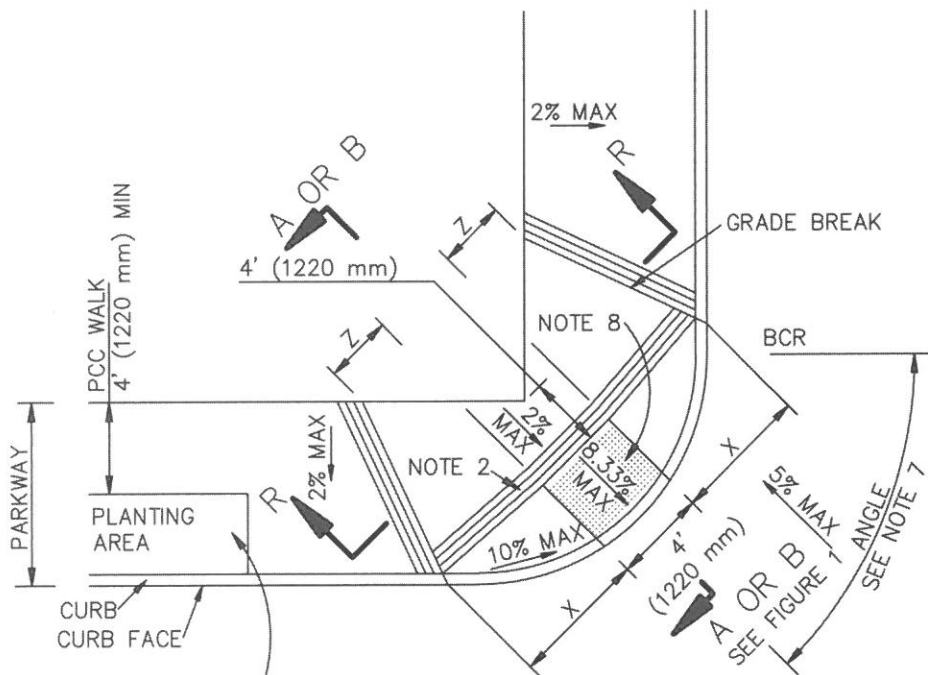
**111-5**

SHEET 1 OF 10



TYPE 3

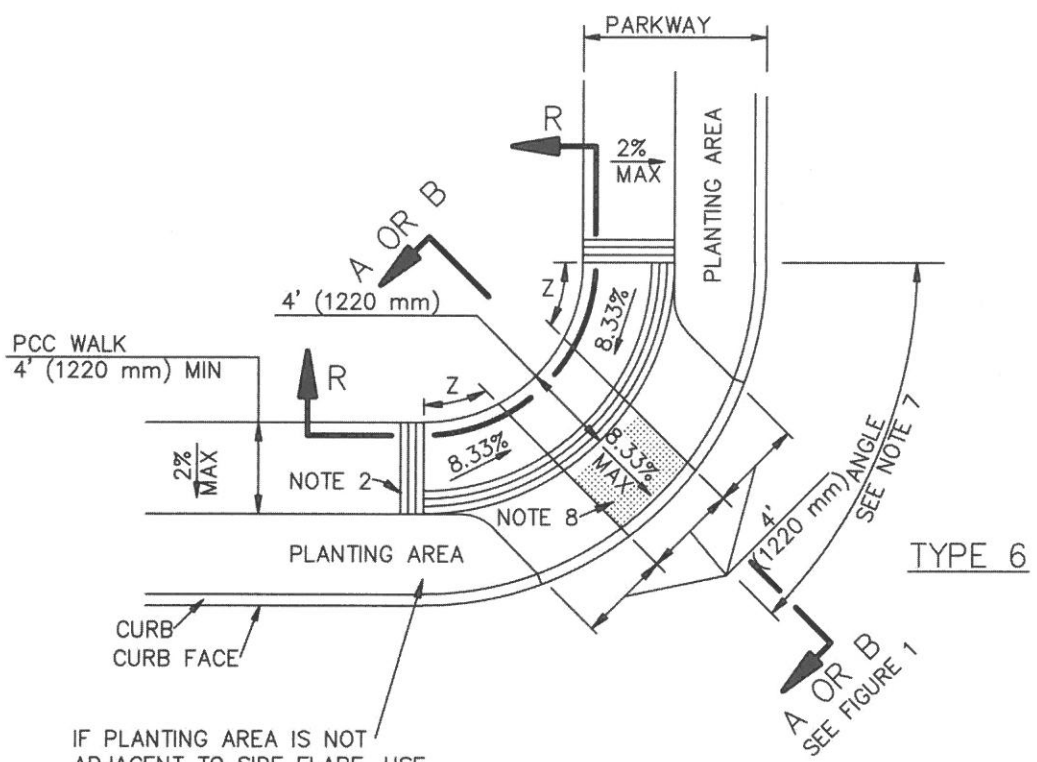
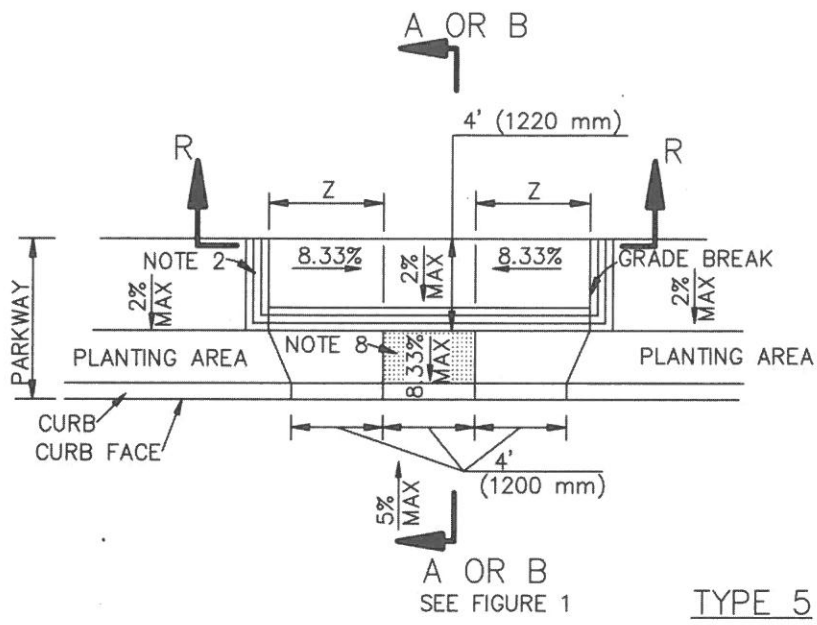
WHERE PLANTING AREA IS ADJACENT TO THE CURB RAMP, USE CASE A, TYPE 6



TYPE 4

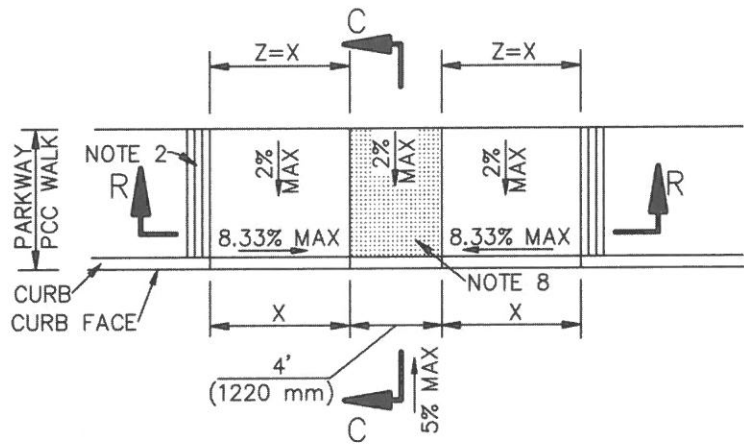
WHERE PLANTING AREA IS ADJACENT TO THE CURB RAMP, USE CASE A, TYPE 6

CASE A

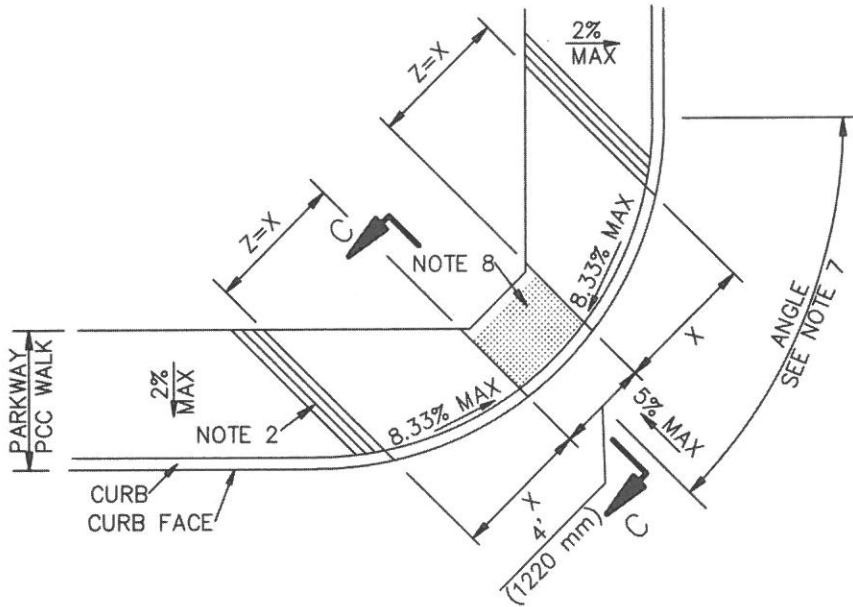


IF PLANTING AREA IS NOT ADJACENT TO SIDE FLARE, USE "X" PER TABLE 2 FOR THAT FLARE

CASE A



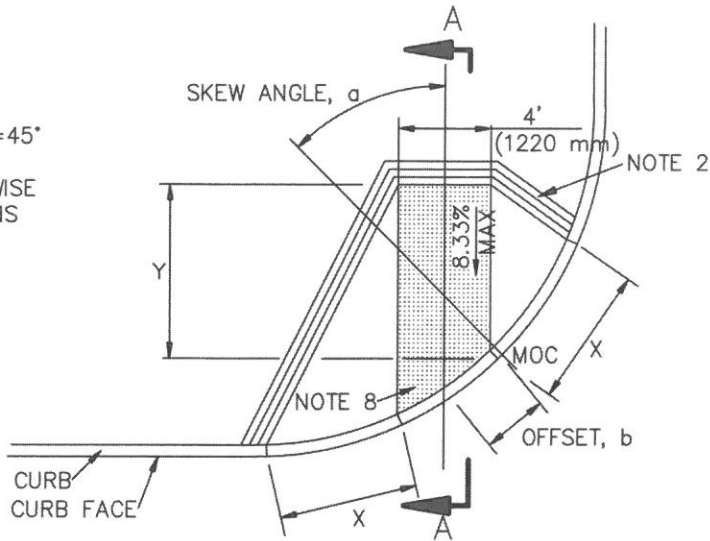
TYPE 1



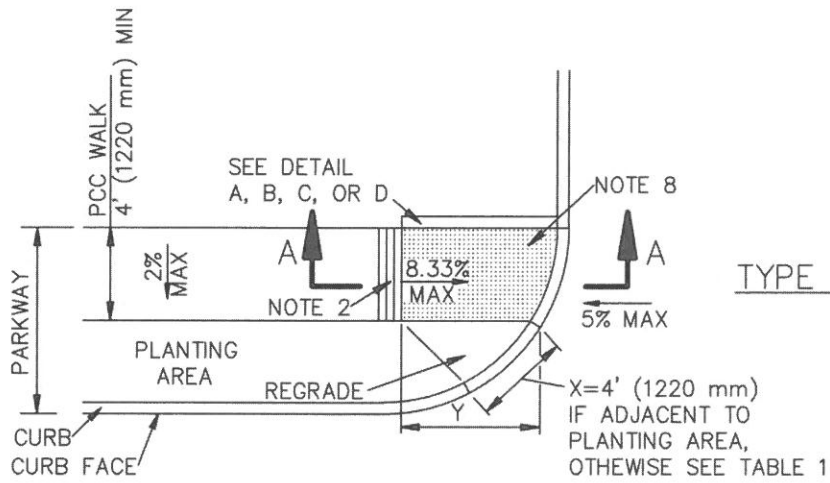
TYPE 2

CASE B

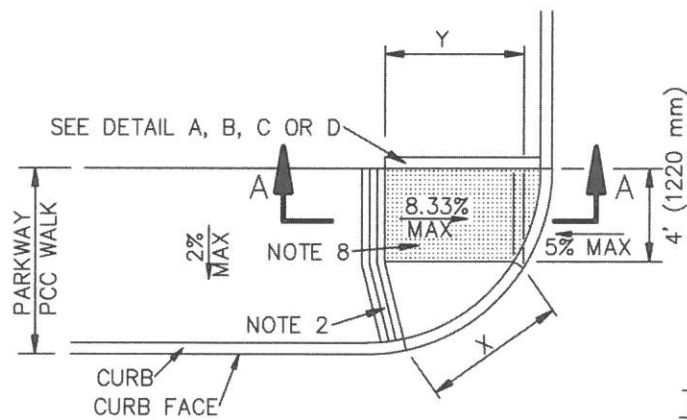
SKEW ANGLE  $\alpha=45^\circ$   
 OFFSET  $b=0$   
 UNLESS OTHERWISE  
 NOTED ON PLANS



CASE C

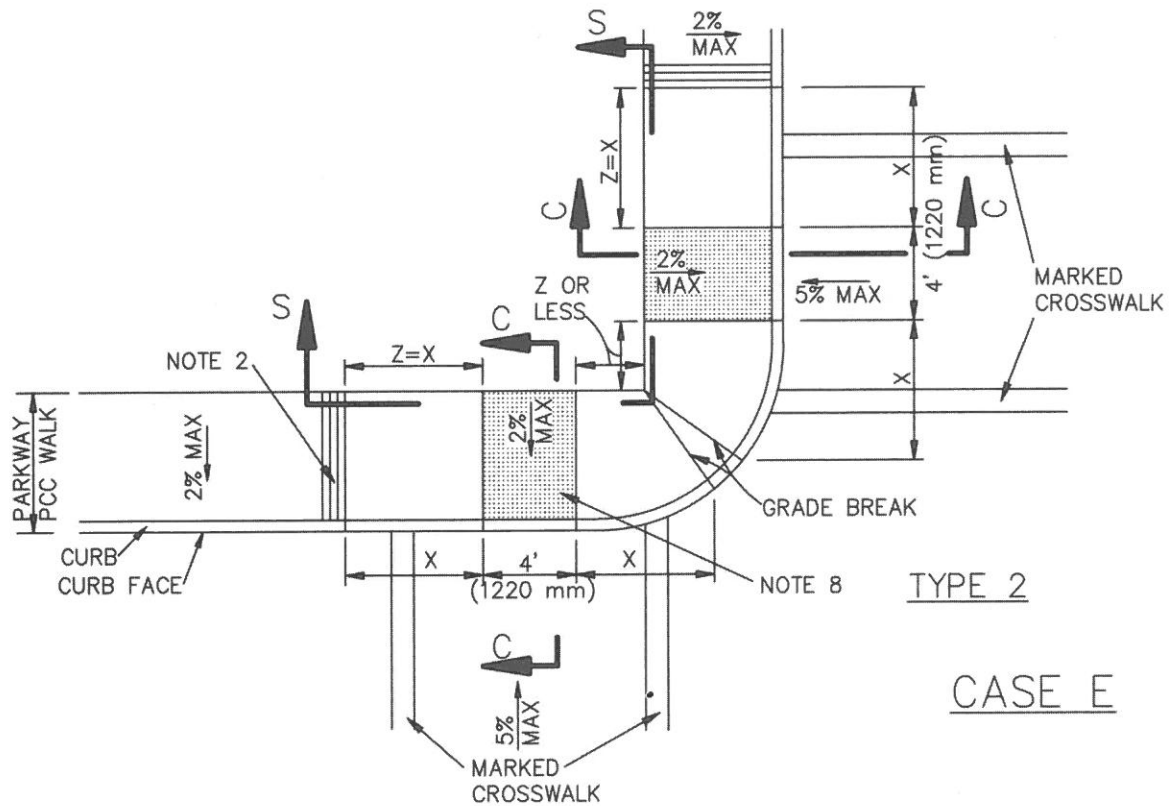
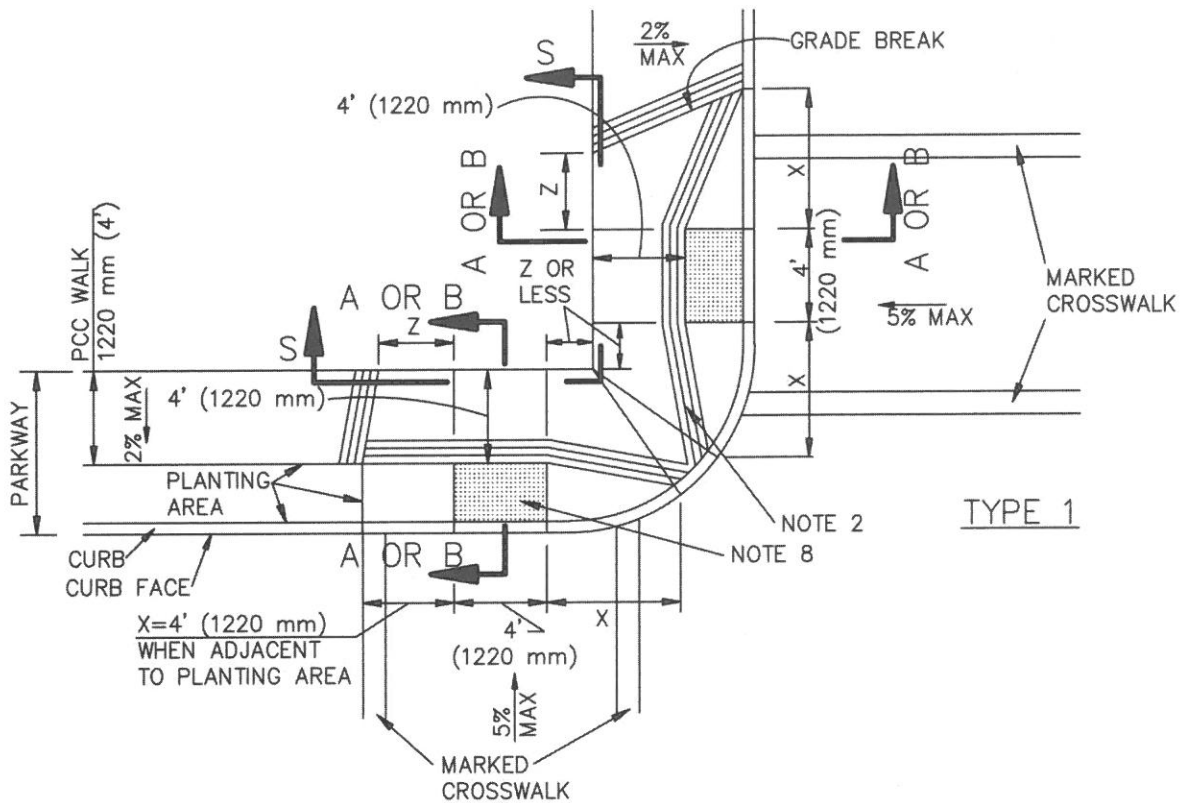


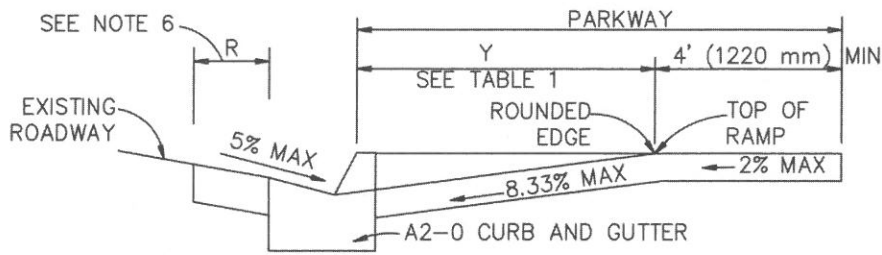
TYPE 1



TYPE 2

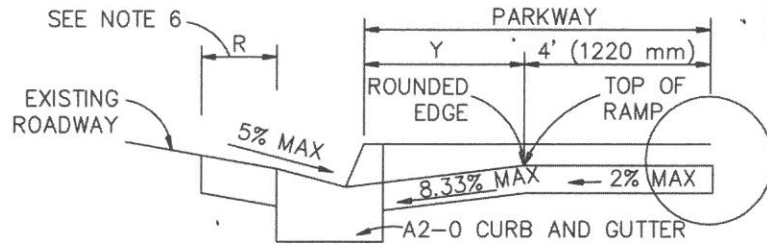
CASE D



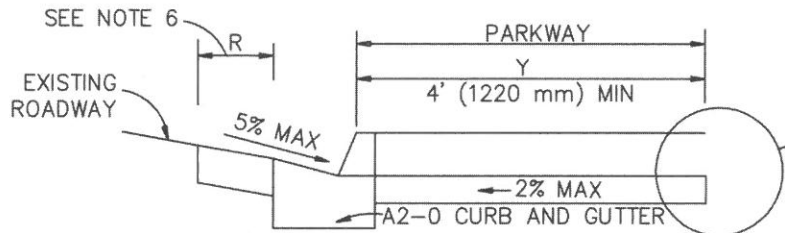


SECTION A-A

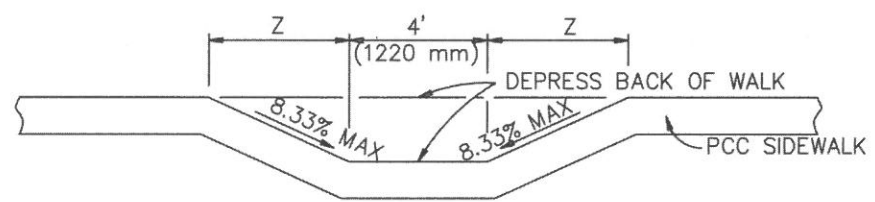
USE FIGURE 1 TO DETERMINE WHICH OF SECTIONS A-A, B-B OR C-C IS APPROPRIATE.



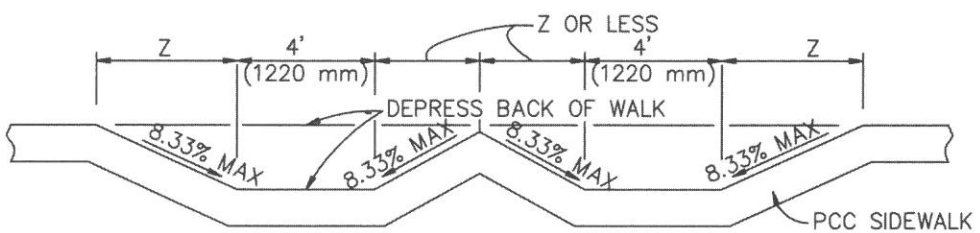
SECTION B-B



SECTION C-C



SECTION R-R



SECTION S-S

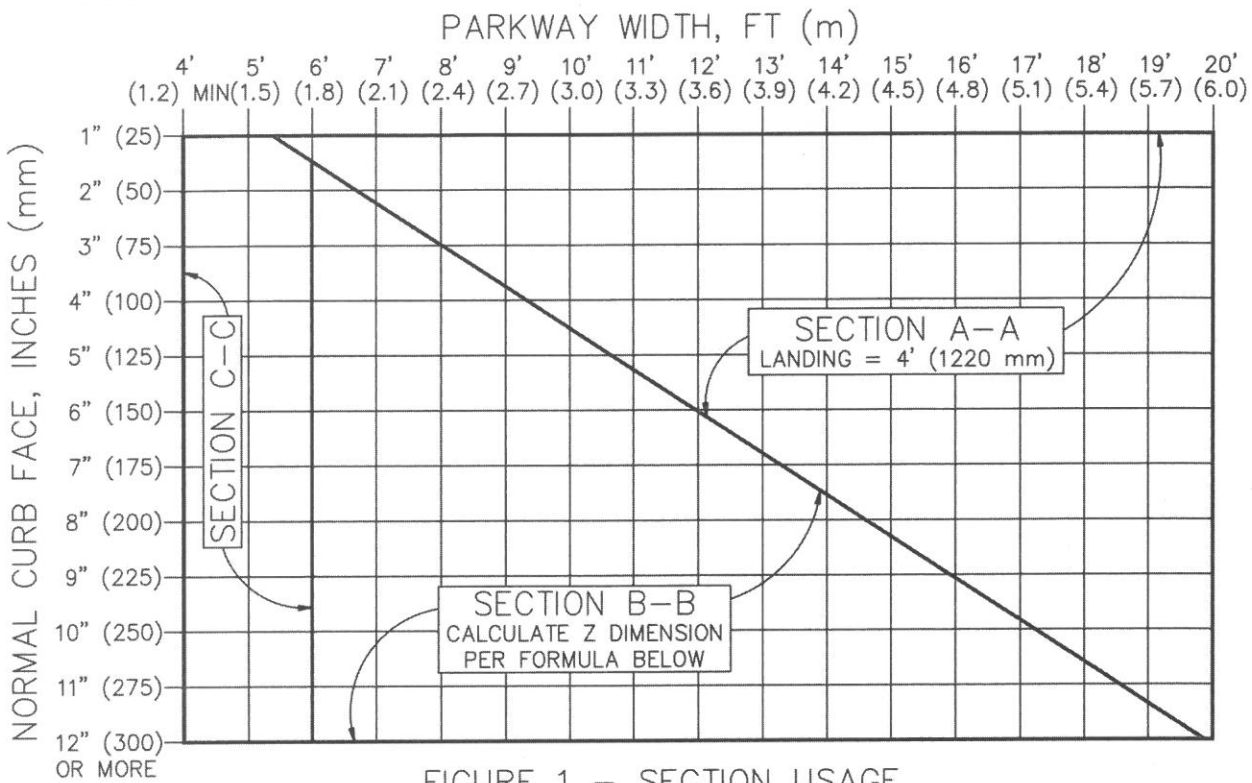


FIGURE 1 - SECTION USAGE

NORMAL CURB FACE, INCHES (mm)	X, FT (mm)	SECTION Y-Y Y, FT (mm)
2" (50)	4.00' (1220) MIN	2.63' (790)
3" (75)	4.00' (1220) MIN	3.95' (1185)
4" (100)	4.00' (1220) MIN	5.26' (1580)
5" (125)	4.17' (1275)	6.58' (1975)
6" (150)	5.00' (1525)	7.90' (2370)
7" (175)	5.83' (1775)	9.21' (2765)
8" (200)	6.67' (2035)	10.53' (3160)
9" (225)	7.50' (2285)	11.84' (3555)
10" (250)	8.33' (2540)	13.16' (3950)
11" (275)	9.17' (2795)	14.47' (4340)
12" (300)	10.00' (3050)	15.79' (4735)

WHERE FIGURE 1 SHOWS USE OF SECTION B-B, FIGURE Z DIMENSION AS FOLLOWS:

W = PARKWAY WIDTH  
 L = LANDING WIDTH, 4' (1220 mm) TYP  
 $Z = [(Y+L)-W] \times 0.760$

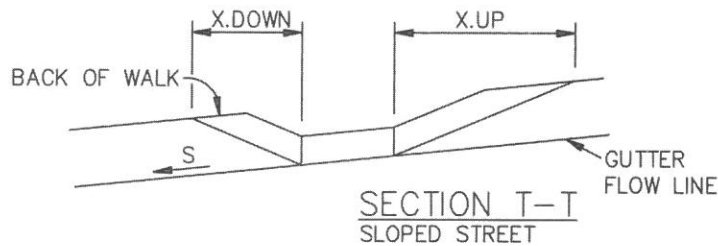
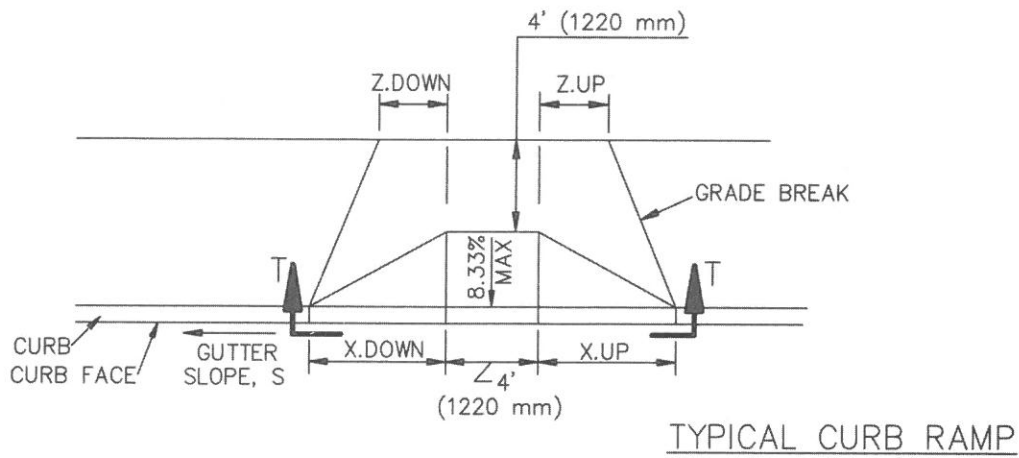
IF  $(Y+L) < W$ , THEN  $Z = 0$

SEE SHEET 9 FOR STREET SLOPE ADJUSTMENT FACTORS, ALL STREETS

TABLE 1 - X AND Y VALUES

TABLE 1 REFERENCE FORMULAS:

$X = CF / 8.333\%$   
 $Y = CF / (8.333\% - 2\% \text{ WALK CROSS SLOPE})$



FOR SLOPED STREETS, MULTIPLY THE DIMENSIONS PARALLEL TO THE STREET, X AND Z, UPSTREAM AND DOWNSTREAM OF THE RAMP, BY THE FACTORS IN THE FOLLOWING TABLE.

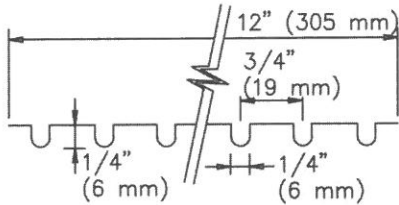
FOR EXAMPLE,  $X.DOWN = X \times K.DOWN$

S	K.DOWN	K.UP
0%	1.000	1.000
0.2%	0.977	1.025
0.5%	0.943	1.064
1%	0.893	1.136
2%	0.806	1.316
3%	0.735	1.563
4%	0.676	1.923
5%	0.625	2.500

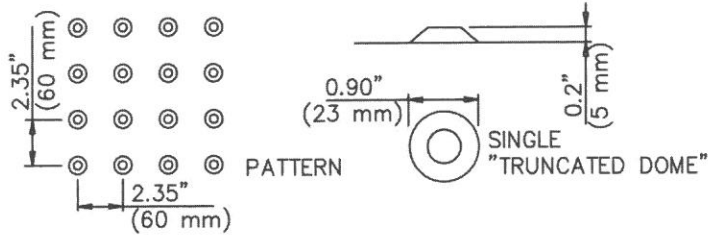
TABLE 2 - SLOPE ADJUSTMENTS

TABLE 2 REFERENCE FORMULAS:  
 $K.DOWN = 8.333\% / (8.333\% + S)$   
 $K.UP = 8.333\% / (8.333\% - S)$

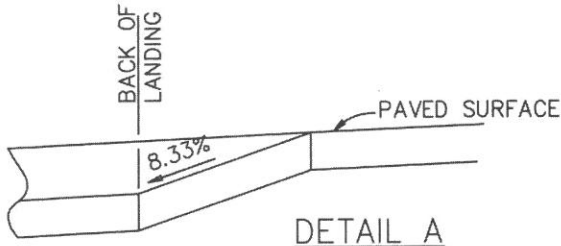
STREET SLOPE ADJUSTMENTS



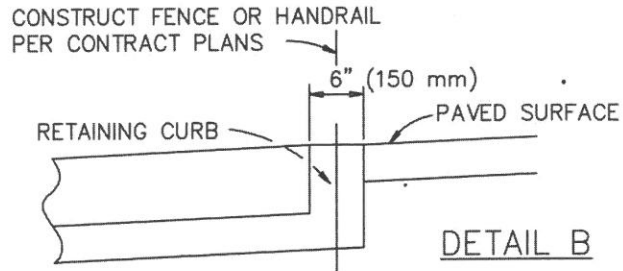
GROOVING DETAIL



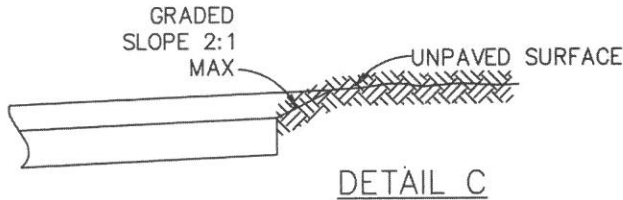
DETECTABLE WARNING DETAIL



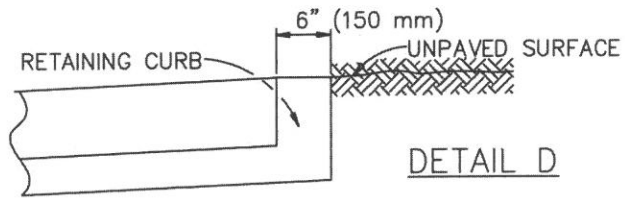
DETAIL A



DETAIL B



DETAIL C



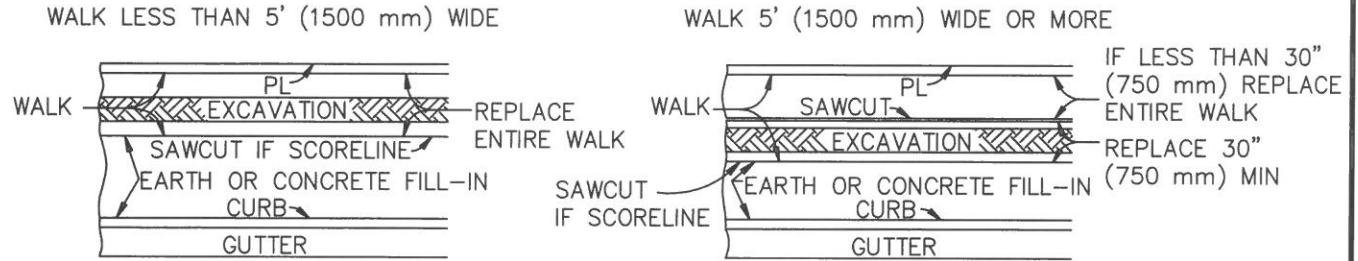
DETAIL D

GENERAL NOTES:

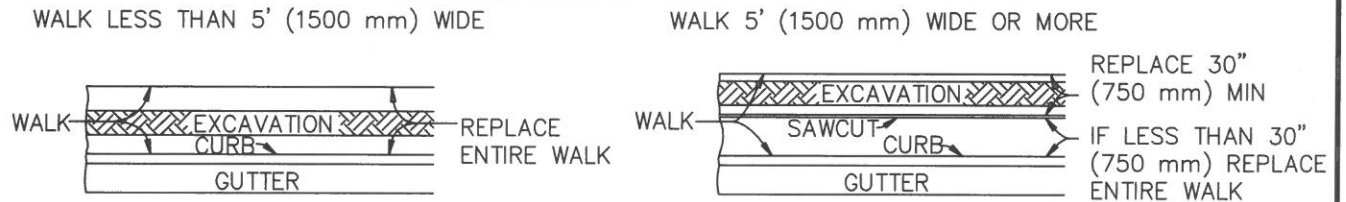
1. CONCRETE SHALL BE CLASS 520-C-2500 (310-C-17) CONFORMING TO SSPWC 201-1.1.2 AND SHALL BE 4" (100 mm) THICK.
2. THE RAMP SHALL HAVE A 12" (305 mm) WIDE BORDER WITH 1/4" (6 mm) GROOVES APPROXIMATELY 3/4" (19 mm) OC. SEE GROOVING DETAIL.
3. THE RAMP SURFACE SHALL HAVE A TRANSVERSE BROOMED SURFACE TEXTURE CONFORMING TO SSPWC 303-1.9.
4. USE DETAIL "A" OR "B" IF EXISTING SURFACE BEHIND LANDING IS PAVED.
5. USE DETAIL "C" OR "D" IF EXISTING SURFACE BEHIND LANDING IS UNPAVED.
6. R = 3' (900 mm) UNLESS OTHERWISE SHOWN ON PLAN. SEE SHEET 7.
7. ANGLE =  $\Delta/2$  UNLESS OTHERWISE SHOWN ON PLAN.
8. CONSTRUCT DETECTABLE WARNING SURFACE PER DETAIL THIS SHEET. MATERIALS SHALL BE PER CONTRACT DOCUMENTS.

## WALK OR FILL-IN REPLACEMENT FOR EXCAVATIONS MADE PARALLEL TO CURB OR PROPERTY LINE

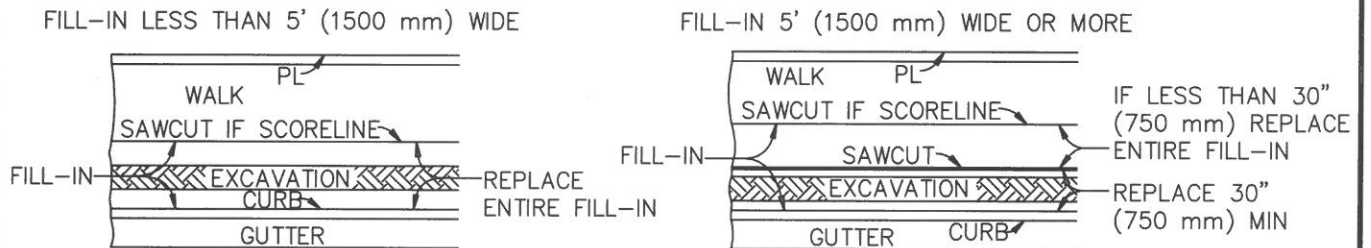
### WALK ADJACENT TO PROPERTY LINE



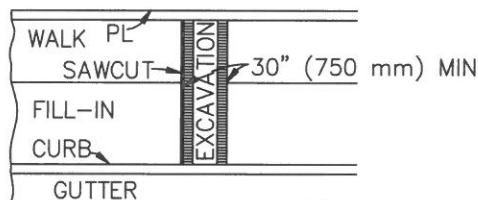
### WALK ADJACENT TO CURB



### FILL-IN REPLACEMENT



## WALK OR FILL-IN REPLACEMENT FOR EXCAVATIONS MADE NORMAL TO CURB OR PROPERTY LINE



THESE REQUIREMENTS ALSO APPLY TO ENDS OF PARALLEL EXCAVATIONS.

IF AN EXCAVATION FALLS WITHIN 30" (750 mm) OF AN EXPANSION JOINT, CONSTRUCTION JOINT, WEAKENED PLANE JOINT, OR EDGE, THE CONCRETE SHALL BE REMOVED AND REPLACED TO THE JOINT OR EDGE.

IF AN EXCAVATION FALLS WITHIN 12" (300 mm) OF A SCORELINE, THE CONCRETE SHALL BE REMOVED AND REPLACED TO THE SCORELINE. THE SCORELINE SHALL BE SAWCUT BEFORE CONCRETE REMOVAL.

THE MINIMUM LENGTH OF REPLACEMENT IN BOTH CASES SHALL BE 30" (750 mm).

### STANDARD PLANS FOR PUBLIC WORKS CONSTRUCTION

PROMULGATED BY THE  
PUBLIC WORKS STANDARDS INC.  
GREENBOOK COMMITTEE  
1993  
REV. 1996, 2009

## SIDEWALK & DRIVEWAY REPLACEMENT

USE WITH STANDARD SPECIFICATIONS FOR PUBLIC WORKS CONSTRUCTION

STANDARD PLAN

# 113-2

SHEET 1 OF 2

## NOTES

1. CONCRETE WALK, FILL-IN AND DRIVEWAYS REMOVED IN CONNECTION WITH CONSTRUCTION SHALL BE REPLACED TO NEATLY SAWED EDGES. ALL CUTS SHALL BE PARALLEL TO OR PERPENDICULAR TO THE CURB; ON CURVES, THE CUT SHALL BE RADIAL TO THE CURB.
2. DRIVEWAY APRONS IN WHICH THE "W" DISTANCE IS LESS THAN 11' (3300 mm) SHALL BE REPLACED IN THEIR ENTIRETY IF CUT IN ANY AREA.
3. DRIVEWAY APRONS IN WHICH THE "W" DISTANCE IS 11' (3300 mm) OR MORE MAY BE CUT WITHIN THE "W" SECTION. THE MINIMUM REPLACEMENT SHALL BE 30" (750 mm) IN LENGTH. THE MINIMUM DISTANCE ALLOWED BETWEEN SUCH CUTS SHALL BE 14' (4200 mm).
4. DRIVEWAY APRONS IN WHICH THE "W" DISTANCE IS 11' (3300 mm) OR MORE MAY BE CUT IN THE "X" OR "R" SECTION. REPLACEMENT SHALL BE THE ENTIRE "X" OR "R" SECTION.
5. DRIVEWAY APRONS SHALL BE REPLACED FROM THE BACK OF THE CURB TO THE FRONT EDGE OF THE WALK, EXCEPT, WHERE WALK IS ADJACENT TO CURB, REPLACEMENT SHALL BE FROM BACK OF CURB TO BACK OF WALK.
6. WALK PORTIONS OF DRIVEWAYS SHALL BE REPLACED AS SHOWN ABOVE FOR EXCAVATIONS MADE PARALLEL OR NORMAL TO CURB.
7. REPLACEMENT OF THE "X" OR "R" SECTION SHALL MATCH EXISTING CONSTRUCTION.

STANDARD PLANS FOR PUBLIC WORKS CONSTRUCTION

**SIDEWALK & DRIVEWAY REPLACEMENT**

STANDARD PLAN

**113-2**

SHEET 2 OF 2